



SHAMROCK HOUSE, GREENWICH, LONDON, SE10
£420,000 LEASEHOLD

A SUPERB AND BRIGHT, ONE BEDROOM, MODERN FLAT THAT MEASURES CIRCA 581 SQUARE THAT IS PART OF THE RECENTLY BUILT DEVELOPMENT ON BARDSLEY LANE, WITHIN THE HEART OF WEST GREENWICH!

Greenwich | 02030533033 | greenwich@winkworth.co.uk

Winkworth

winkworth.co.uk

See things differently



DESCRIPTION:

A superb and bright, one bedroom, modern flat that measures circa 581 square that is part of the recently built development on Bardsley Lane, within the heart of West Greenwich!

In excellent order throughout the property comprises a good sized 26ft kitchen living room that opens on to a lovely 11ft balcony. There is a large double bedroom that also features a good sized fitted wardrobe. There is a modern bathroom and ample storage off the entrance hallway. Added benefits include video entry and double glazing.

Bardsley Lane is perfectly located just moments from Greenwich town centre, which offers a wide selection of shops and restaurants, along with mainline rail, riverboat service and DLR. St Alfege Park is just a minute away, as is the Royal Park with Observatory. Your earliest viewing is recommended.

AT A GLANCE

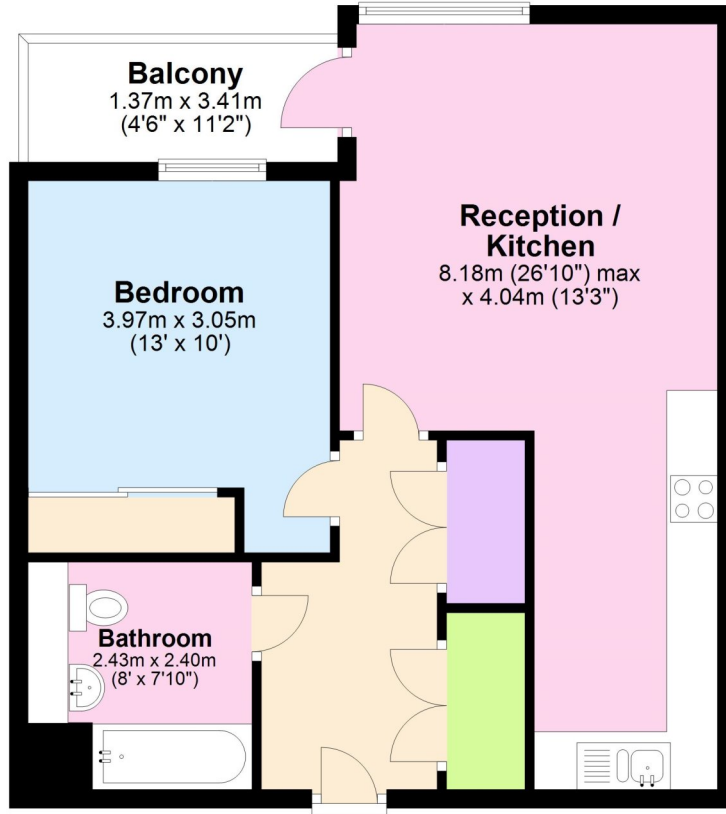
- Beautiful apartment
- one bedroom
- 3rd floor with lift
- circa 581 square foot
- 26ft kitchen diner
- ample storage
- West Greenwich location
- Moments from town centre
- close to Royal Park





Third Floor

Approx. 54.1 sq. metres (581.8 sq. feet)



Total area: approx. 54.1 sq. metres (581.8 sq. feet)

This floorplan is for illustration purposes only and is not to scale. The position and size of doors, windows, appliances and other features are approximate.

Energy Efficiency Rating		Current	Potential
Very energy efficient - lower running costs			
(92-100) A		88	88
(81-91) B			
(69-80) C			
(55-68) D			
(39-54) E			
(21-38) F			
(1-20) G			
Not energy efficient - higher running costs			
England, Scotland & Wales		EU Directive 2002/91/EC	

Greenwich | 02030533033 | greenwich@winkworth.co.uk



winkworth.co.uk

See things differently

Winkworth wishes to inform prospective buyers and tenants that these particulars are a guide and act as information only. All our details are given in good faith and believed to be correct at the time of printing but they don't form part of an offer or contract. No Winkworth employee has authority to make or give any representation or warranty in relation to this property. All fixtures and fittings, whether fitted or not are deemed removable by the vendor unless stated otherwise and room sizes are measured between internal wall surfaces, including furnishings.