



## Devonshire Road, SE23

£360,000 *Leasehold*

1  1  1 

Stunning period apartment in a prime location. This charming property boasts high ceilings, large windows and original features throughout. The spacious communal gardens offer a tranquil retreat in the heart of Forest Hill.



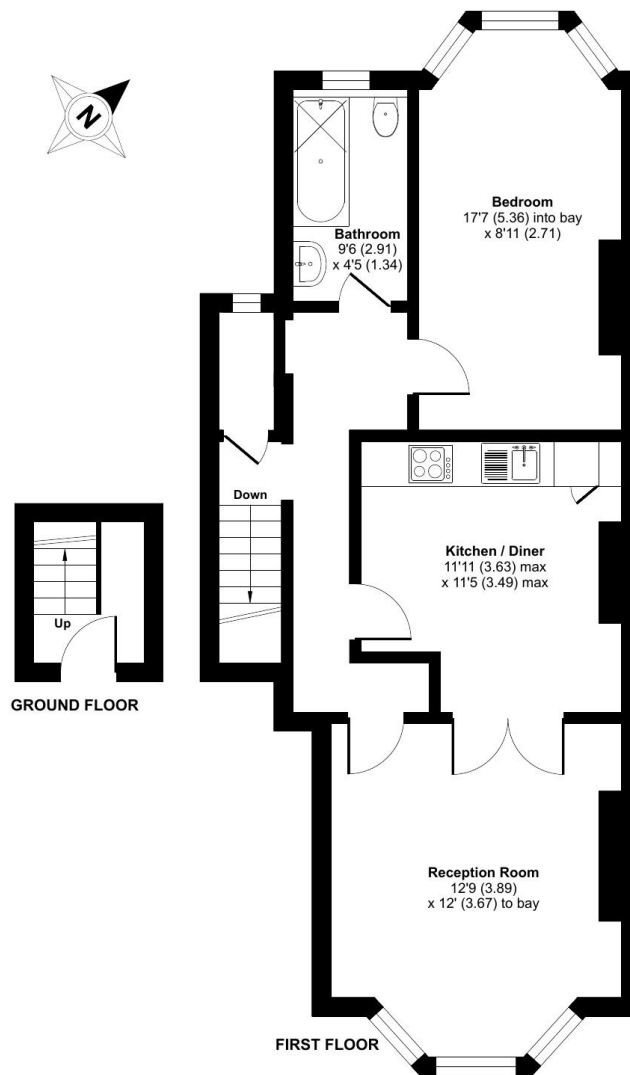
**Forest Hill**

| [foresthill@winkworth.co.uk](mailto:foresthill@winkworth.co.uk)

## Devonshire Road, London, SE23

Approximate Area = 668 sq ft / 62 sq m

For identification only - Not to scale

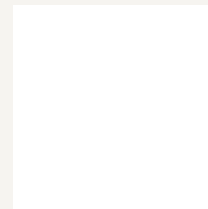


Floor plan produced in accordance with RICS Property Measurement Standards incorporating International Property Measurement Standards (IPMS2 Residential). © nichecom 2025. Produced for Winkworth Forest Hill and New Cross. REF: 1342271

### MATERIAL INFO

**Tenure:** Leasehold

For more information, scan the QR code or visit the link below



<https://www.winkworth.co.uk/sale/property/FHL250236>

Where no figures are shown, we have been unable to ascertain the information. All figures that are shown were correct at the time of printing.

**Forest Hill**

| [foresthill@winkworth.co.uk](mailto:foresthill@winkworth.co.uk)