



RENMUIR STREET, SW17
£675,000 FREEHOLD

SUPERB FAMILY HOME CLOSE TO TOOTING STATION

Tooting | 020 8767 5221 | tooting@winkworth.co.uk 17 Upper Tooting Road, London, SW17 7TS

Winkworth

for every step...

winkworth.co.uk



SUMMARY:

An opportunity to acquire a family home which has become available after many years. The property offers generous proportions along with the ability to create a substantial family home close to all local amenities. Plenty of character is evident with original fireplaces and beautiful original parquet floor throughout the living room and dining room. There are two generous double bedrooms on the first floor, one good size single bedroom and a family bathroom. Externally, the rear garden is large and offers an abundance of space to utilise along with a fully working outside WC. There is further scope to extend into the loft and to the rear subject to usual planning permissions.

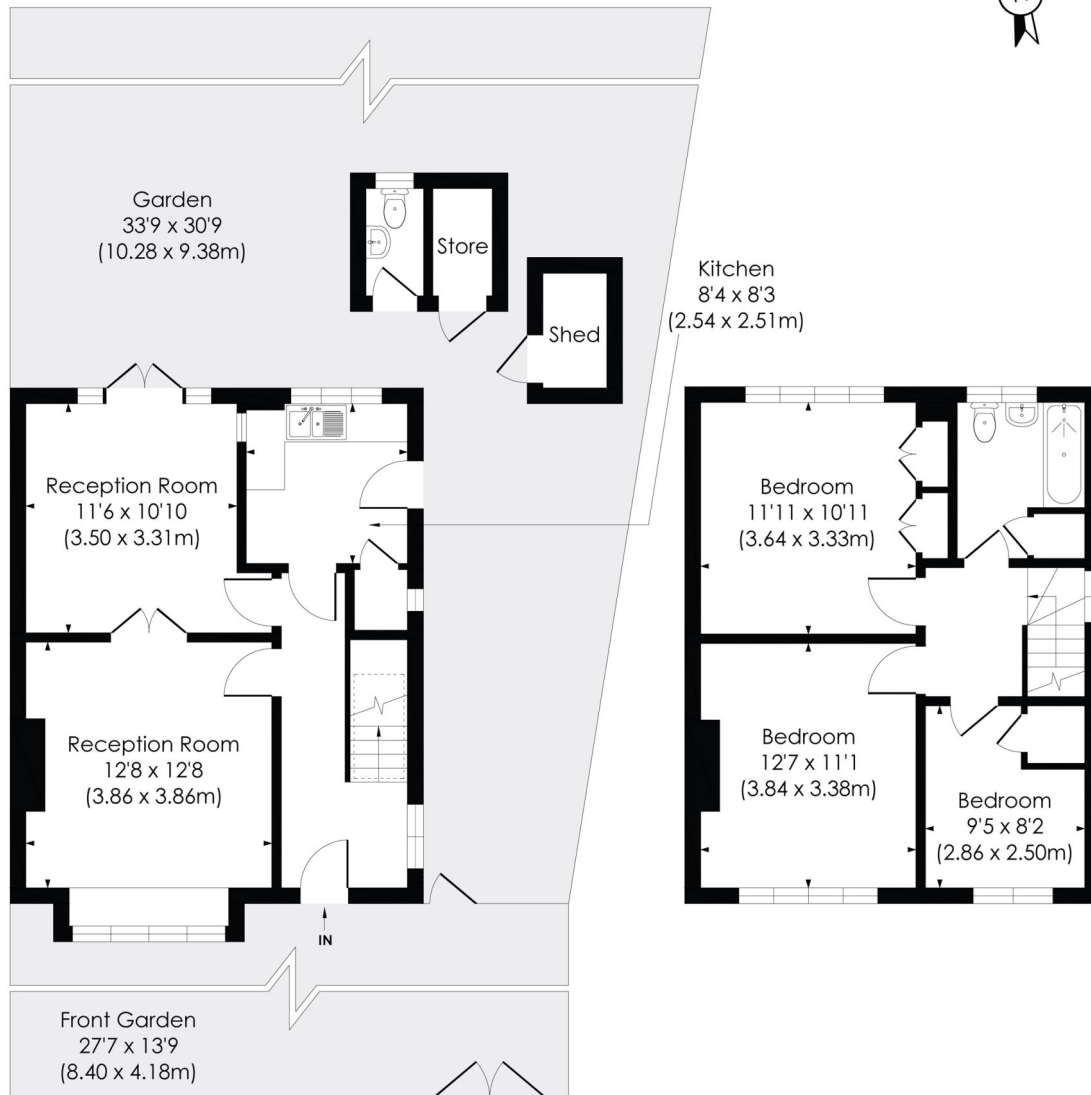
Renmuir Street is ideally located for access to Tooting National Rail station, with the shops and amenities of Tooting Broadway only a short distance away.



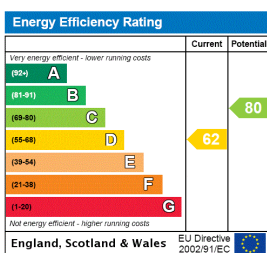
RENMUIR STREET, SW17

Approx. Gross Internal Floor Area

1038 Sq. ft/96.42 Sq. m (incl. Store)



This floorplan is for illustration purposes only and is not to scale. The position and size of doors, windows, appliances and other features are approximate.



Tooting | 020 8767 5221 | tooting@winkworth.co.uk
17 Upper Tooting Road, London, SW17 7TS

Winkworth

for every step...

winkworth.co.uk

Winkworth wishes to inform prospective buyers and tenants that these particulars are a guide and act as information only. All our details are given in good faith and believed to be correct at the time of printing but they don't form part of an offer or contract. No Winkworth employee has authority to make or give any representation or warranty in relation to this property. All fixtures and fittings, whether fitted or not are deemed removable by the vendor unless stated otherwise and room sizes are measured between internal wall surfaces, including furnishings.