



BOYDELL COURT, NW8 £2,395pw / £10,378pm FURNISHED OR UNFURNISHED

A well presented three bedroom penthouse set on the tenth floor of this portered block, ideally located for Swiss Cottage Tube Station as well as St John's Wood High Street. The property benefits from a roof terrace offering panoramic 180 degree views across London's skyline, parking garage and air conditioning.

Three Bedrooms | Three Bathrooms | Reception Room | Fitted Kitchen
| 24 Hour Porterage | Air Conditioning | Communal Heating | Communal Hot Water
| First Come, First Served Parking | Roof Terrace

winkworth.co.uk/st-johns-wood

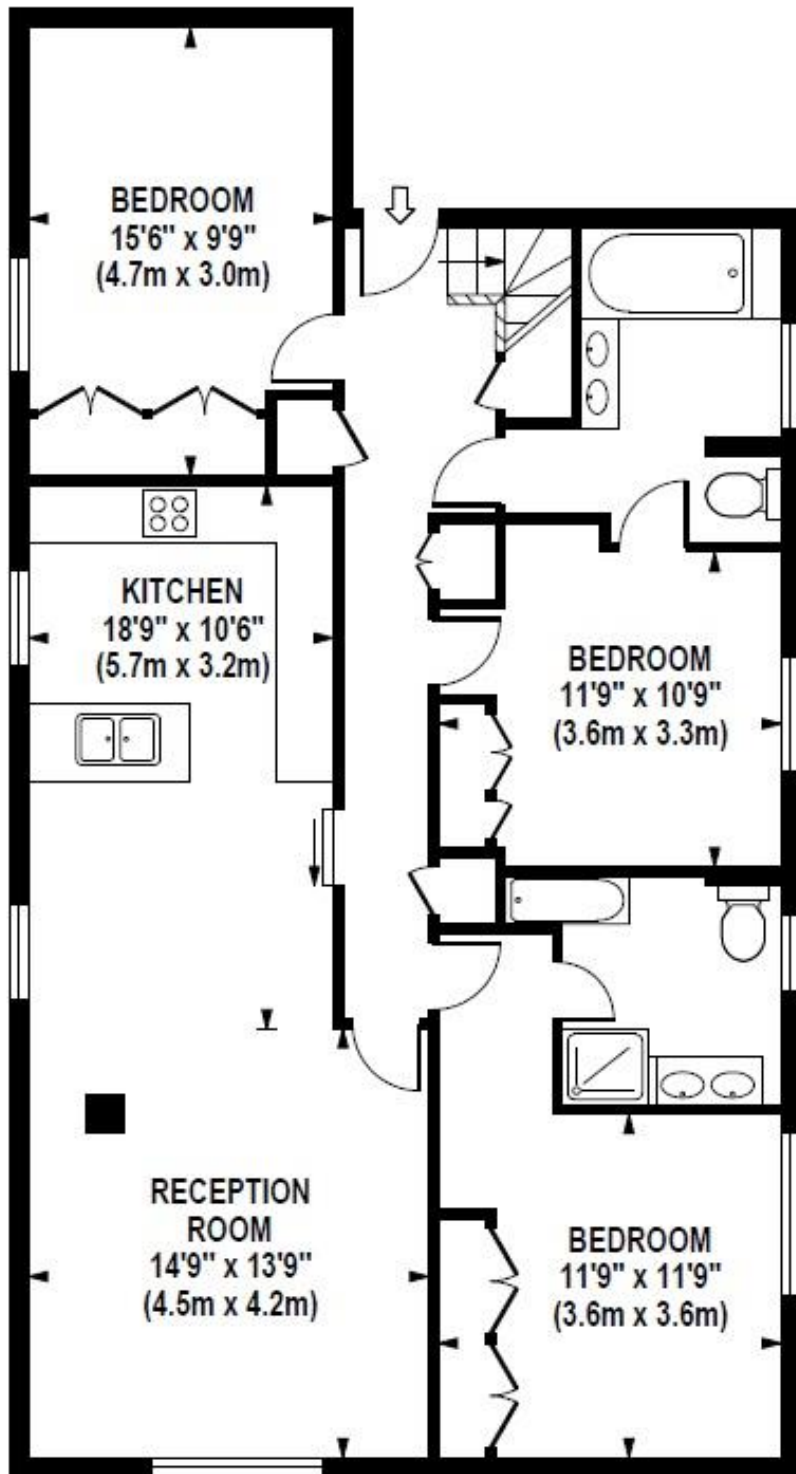
Winkworth

For every step...

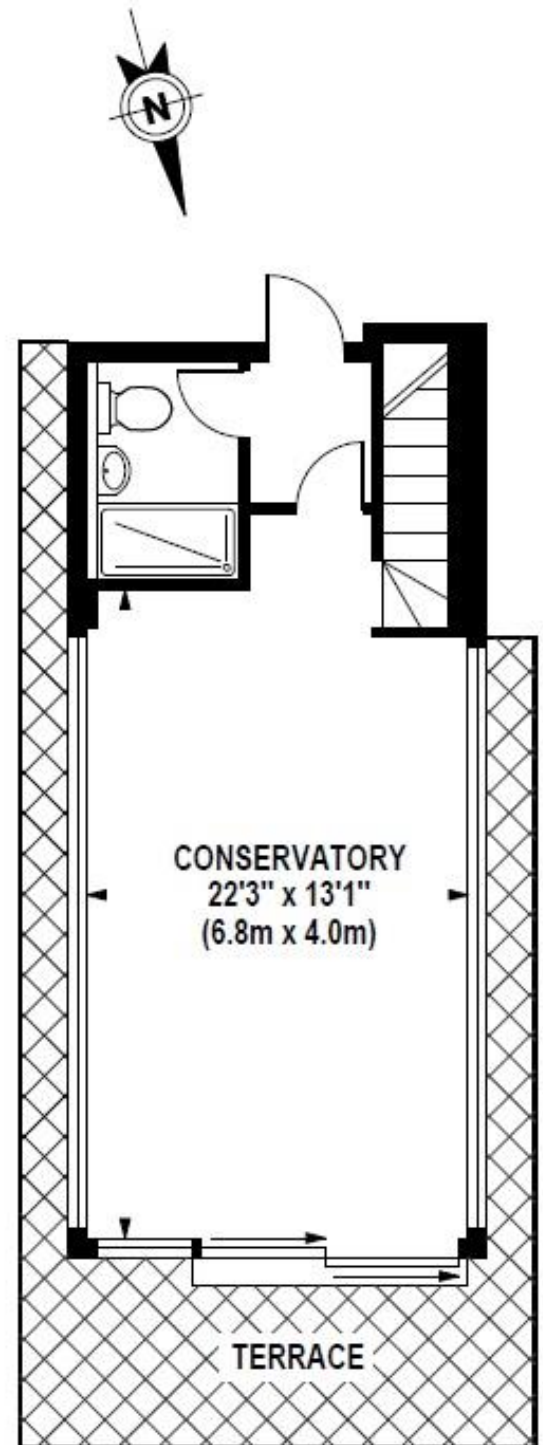


BOYDELL COURT

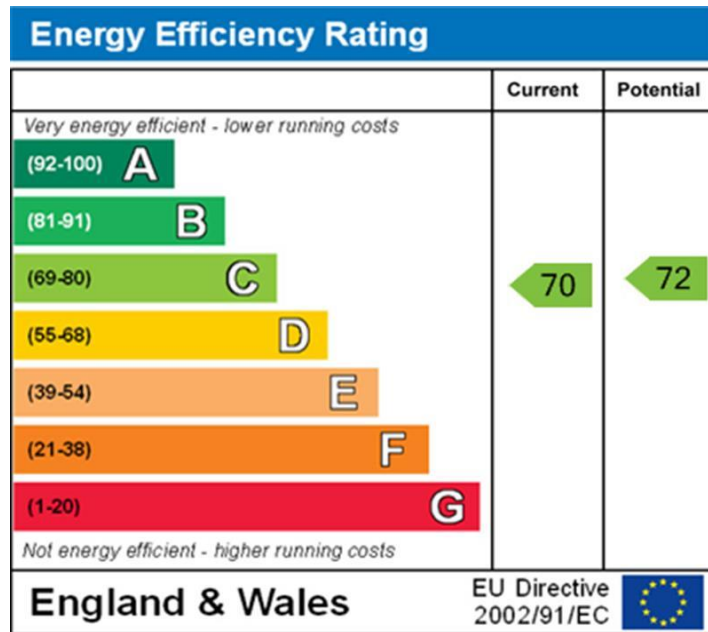
Approximate Gross Internal Area 1560 sq ft / 144.9 sq m



TENTH FLOOR
GROSS INTERNAL
FLOOR AREA 1170 SQ FT



ELEVENTH FLOOR
GROSS INTERNAL
FLOOR AREA 390 SQ FT



NB: These particulars are not an offer or contract, nor part of one. You should not rely on statements by Winkworth in the particulars or by word of mouth or in writing "information" as being factually accurate about the property, its condition or its value. Neither Winkworth nor any joint agent has any authority to make any representations about the property, and accordingly any information given is entirely without responsibility on the part of the agents, seller(s) or lessor(s). These particulars are prepared on the basis of the information supplied by our client and are a rough guide for information only. The photographs show only certain parts of the property. We are not able to check all of the information and therefore are unable to guarantee accuracy. All interested parties are therefore advised to undertake all necessary inspections and checks that they deem appropriate. Where displayed, the square footage is taken from the floor plans, which are created by an independent supplier. These measurements are approximate and included for illustrative purposes only. The measurements may vary. Winkworth does not make any representation as to the accuracy of these measurements and you should seek to verify them for yourself. Winkworth accept no liability for any loss you may suffer if you rely on these measurements. All fixtures and fittings, whether fitted or not are deemed removable by the vendor unless stated. Any reference to alterations to, or use of, any part of the property does not mean that any necessary planning, building regulations or other consent has been obtained. Amenities and appliances have not been tested.

St John's Wood | 103-104 St John's Wood Terrace, London NW8 6PL
020 7586 7001 | stjohnswood@winkworth.co.uk

