



MARLBOROUGH AVENUE, LONDON, E8
£3,000 PER MONTH UNFURNISHED/FURNISHED

EPC - D

AN OUTSTANDING 3 BEDROOM VICTORIAN HOUSE!

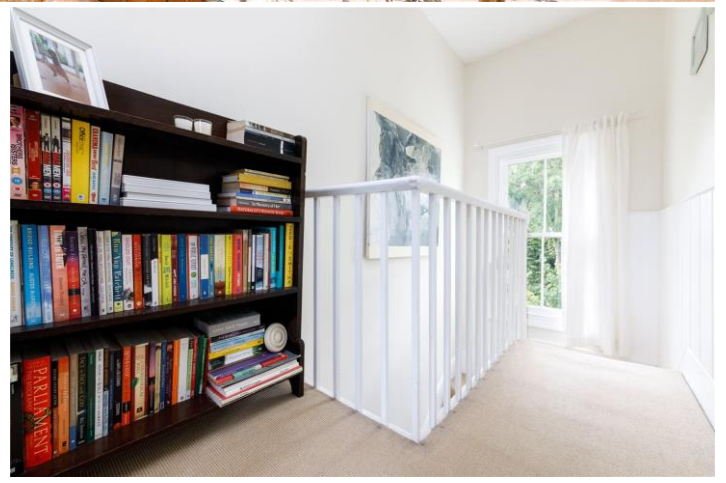
Hackney | 020 8986 4216 | hackney@winkworth.co.uk

Tenant Fees Apply: Details of fees for tenant referencing, tenancy agreement admin fees and renewal fees are available on the Winkworth website and the link can be found with the displayed rent for the property. Tenants should ensure they are fully conversant with these upfront fees and other costs that are involved at the outset of the tenancy before making an offer to rent and your local Winkworth office will provide written details upon request.

winkworth.co.uk

Winkworth

See things differently



DESCRIPTION:

An outstanding 3 bedroom Victorian house next to London Fields!

The fantastic property offers three double bedrooms, a large family bathroom suite, and a large open plan kitchen and reception which leads onto the private garden and patio. The property benefits from many period features throughout including sash windows, wooden floors, fireplaces and floor to ceiling windows in the reception.

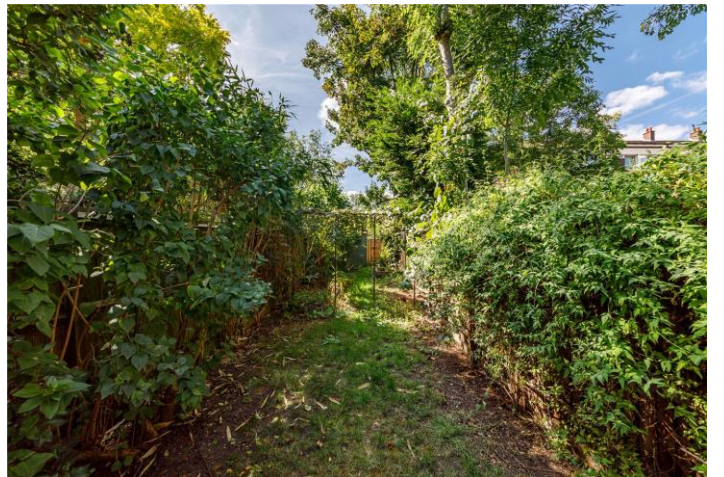
Set in an unbelievable location in between London Fields and Haggerston Park. With local transport links nearby.

A must see!

winkworth.co.uk

Winkworth

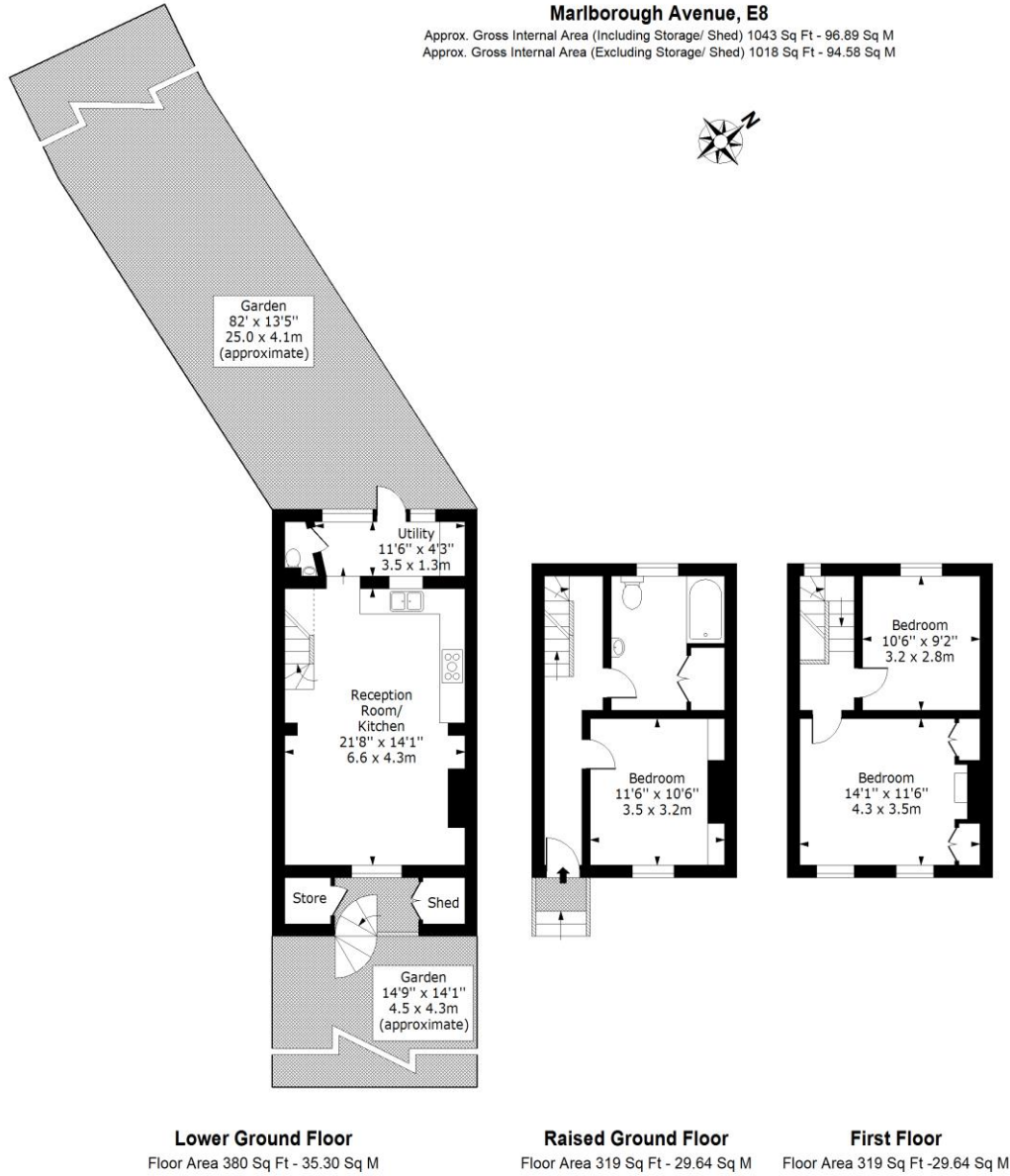
See things differently



Winkworth

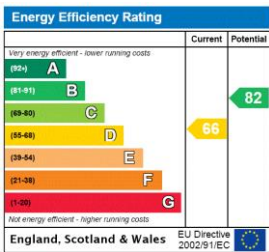
Marlborough Avenue, E8

Approx. Gross Internal Area (Including Storage/ Shed) 1043 Sq Ft - 96.89 Sq M
 Approx. Gross Internal Area (Excluding Storage/ Shed) 1018 Sq Ft - 94.58 Sq M



For Illustration Purposes Only - Not To Scale
 www.ipaplus.com

This floorplan is for illustration purposes only and is not to scale. The position and size of doors, windows, appliances and other features are approximate.



Hackney | 020 8986 4216 | hackney@winkworth.co.uk



winkworth.co.uk

See things differently

Winkworth wishes to inform prospective buyers and tenants that these particulars are a guide and act as information only. All our details are given in good faith and believed to be correct at the time of printing but they don't form part of an offer or contract. No Winkworth employee has authority to make or give any representation or warranty in relation to this property. All fixtures and fittings, whether fitted or not are deemed removable by the vendor unless stated otherwise and room sizes are measured between internal wall surfaces, including furnishings.