



REGENCY STREET, SW1P

£400,000

LEASEHOLD

At a glance...

- One Double Bedroom
- Super Bright
- Great Condition
- 1st Floor
- Close to Transport Links
- Council Tax Band: E

Winkworth

for every step...



Score	Energy rating	Current	Potential
92+	A		
81-91	B		
69-80	C		77 C
55-68	D	61 D	
39-54	E		
21-38	F		
1-20	G		

REGENCY STREET, SW1P

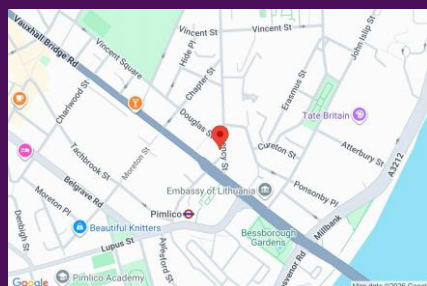
£400,000

LEASEHOLD

Positioned on the 1st floor of this converted Edwardian schoolhouse this one-bedroom flat is presented in excellent condition and offers bright accommodation throughout.

112 Regency Street was originally built in 1915 and was converted to residential use around 2008. This flat offers a large reception room and open-plan kitchen with multiple windows, wooden floors and built-in appliances, double bedroom with good storage and smart modern bathroom.

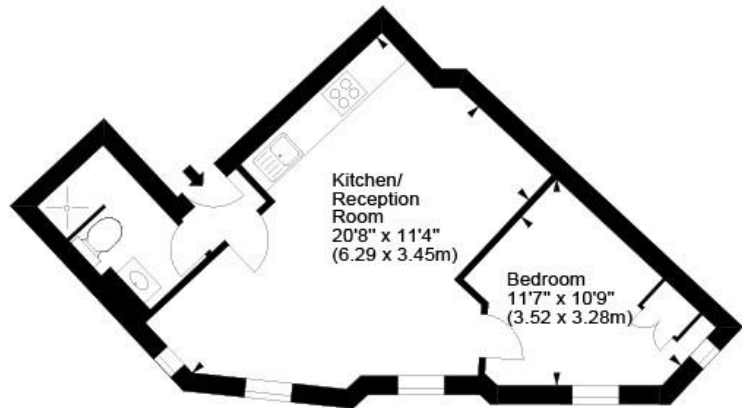
Located within 0.1 miles of Pimlico underground station this flat would make an ideal London pied-a-terre, 1st time buy or rental investment.



winkworth wishes to inform prospective buyers and tenants that these particulars are a guide and act as information only. All our details are given in good faith and believed to be correct at the time of printing but they don't form part of an offer or contract. No winkworth employee has authority to make or give any representation or warranty in relation to this property. All fixtures and fittings, whether fitted or not are deemed removable by the vendor unless stated otherwise and room sizes are measured between internal wall surfaces - including fireplaces.

Regency Street, SW1

Approx. Gross Internal Area
374 Sq Ft - 34.74 Sq M



First Floor

For illustration purposes only. Not to scale.
All measurements are taken and shown at floor level.
www.r3photography.co.uk © Photography / Floor Plans / Lease Plans / EPCs

Winkworth

Pimlico & Westminster

020 7828 1786

pimlico@winkworth.co.uk

winkworth.co.uk/pimlico-westminster

Winkworth

for every step...