



MICKLEFIELD WAY, HERTFORDSHIRE, WD6
£400,000 FREEHOLD

A THREE BEDROOM TUNNEL LINKED FAMILY HOUSE

Borehamwood | 020 8953 8899 | borehamwood@winkworth.co.uk



Winkworth

DESCRIPTION:

Located on the outskirts of Borehamwood, within walking distance of local shops and the 292 bus route to Borehamwood town centre and Thameslink station as well as Edgware and Colindale beyond, is this well presented three bedroom tunnel linked terrace house.

Having been subject to some upgrades over the last couple of years including the kitchen and shower room, the accommodation is bright and well proportioned, totals 961 square feet and is complimented by a South Westerly facing rear garden.

AT A GLANCE

- 3 Bedrooms
- Double Reception
- 961 Square Feet
- Double Glazed
- Gas Central Heating
- South Westerly Rear Garden

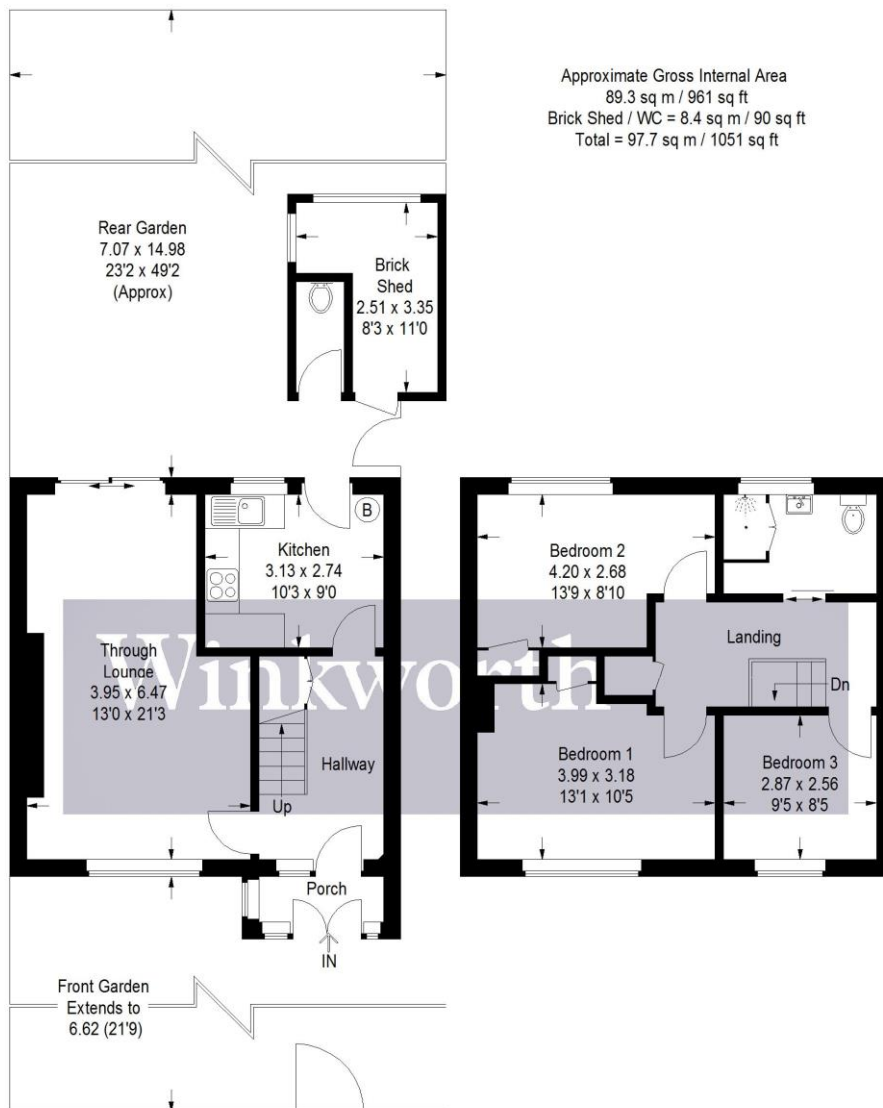


Winkworth



Winkworth



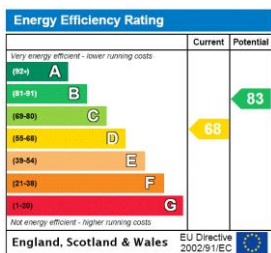


Ground Floor

First Floor

Illustration for identification purposes only, measurements are approximate, not to scale. Winkworth © 2019 (ID 524627)

This floorplan is for illustration purposes only and is not to scale. The position and size of doors, windows, appliances and other features are approximate.



Tenure: Freehold
Term: Expires -
Service Charge: £0 per annum
Ground Rent: £ 0 Annually (subject to increase)
Council Tax Band:

Where no figures are shown, we have been unable to ascertain the information. All figures that are shown were correct at the time of printing.