



**DOUNESFORTH GARDENS, SW18**  
**£2,000 PER MONTH**

**A bright and well presented two double bedroom apartment  
 conveniently located between Earlsfield and Southfields**

Southfields | 020 8877 1000 | southfields@winkworth.co.uk

**Winkworth**

for every step...

winkworth.co.uk





### DESCRIPTION:

This well-proportioned two-bedroom flat is situated on the top floor of a purpose-built block. Presented in good condition throughout there is a reception room, with plenty of space of living and dining, a modern kitchen with integrated appliances, bathroom with bath and shower over, separate w/c and two double bedrooms.

Dounesforth Gardens is a quiet cul-de-sac backing onto the green open space of King Georges Park. The property is located just 0.3 miles from Earlsfield Station (SW Rail) and less than a mile from Southfields Station (District Line). An array of shops, restaurants and cafes in Earlsfield and Southfields are also on your doorstep.

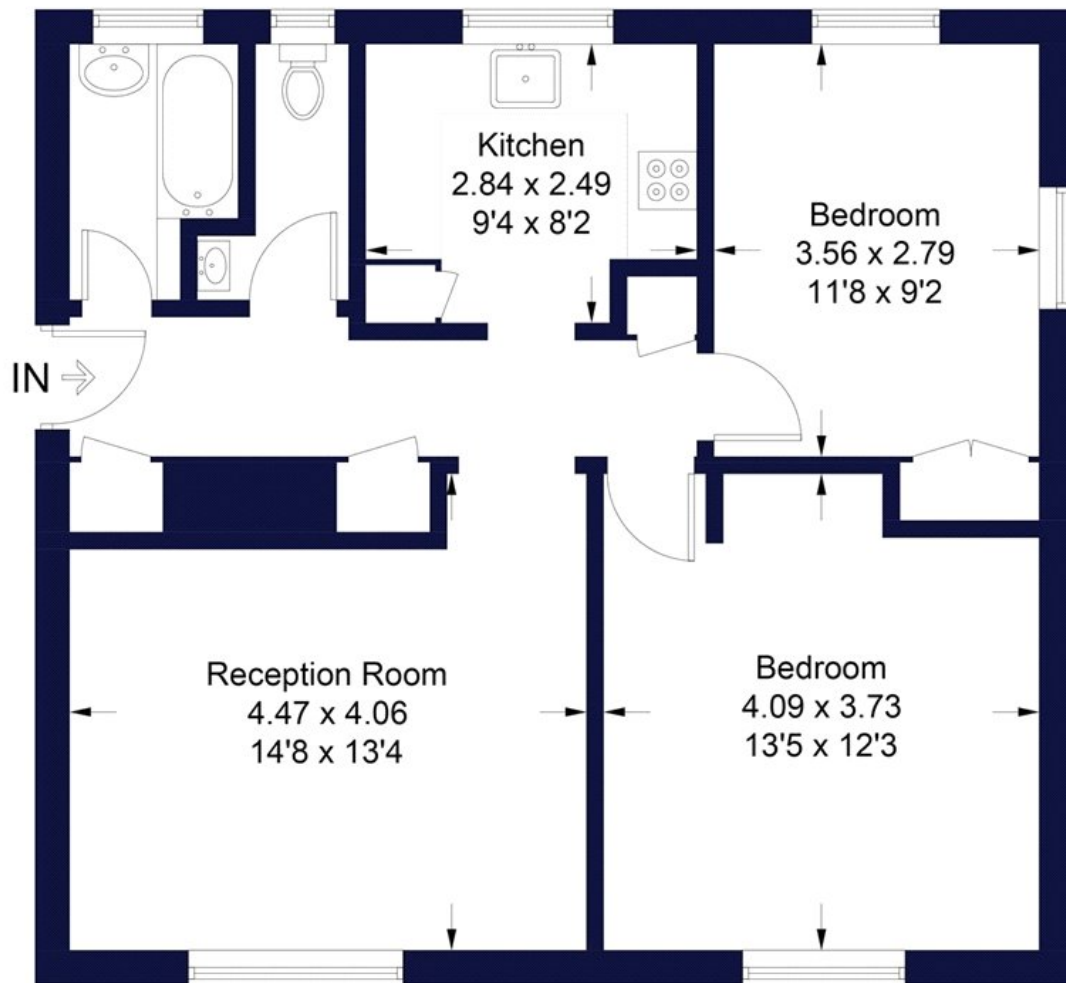




## Dounesforth Gardens

Approximate Gross Internal Area Total = 65.3 sq m / 703 sq ft

**Winkworth**



## Second Floor

Illustration for identification purposes only, measurements are approximate, not to scale. FloorplansUsketch.com © 2018 (ID441240)

This floorplan is for illustration purposes only and is not to scale. The position and size of doors, windows, appliances and other features are approximate.

**Deposit:** 5 weeks' rent

**Holding Deposit:** 1 week's rent

**Council Tax Band:** Wandsworth

Where no figures are shown, we have been unable to ascertain the information. All figures that are shown were correct at the time of printing.

Southfields | 020 8877 1000 | southfields@winkworth.co.uk

**Winkworth**

for every step...

[winkworth.co.uk](http://winkworth.co.uk)

Winkworth wishes to inform prospective buyers and tenants that these particulars are a guide and act as information only. All our details are given in good faith and believed to be correct at the time of printing but they don't form part of an offer or contract. No Winkworth employee has authority to make or give any representation or warranty in relation to this property. All fixtures and fittings, whether fitted or not are deemed removable by the vendor unless stated otherwise and room sizes are measured between internal wall surfaces, including furnishings.