



Benhams, Bentley Close, Kings Worthy, Winchester, Hampshire, SO23 7FG

Winkworth

Benhams, Bentley Close, Kings Worthy, Winchester, Hampshire, SO23 7FG

Smartly presented maisonette with garden

This spacious, very smartly presented maisonette with garden is situated on the ground floor of a super purpose-built block of just four apartments, constructed by Bendall Developments Ltd in 2005. The apartment feels incredibly light courtesy of the number of windows, and this is complemented by the pleasing neutral décor throughout.

The entrance hall has attractive wood-style flooring and a storage cupboard to one side. At the far end of the hall, the super open plan sitting/dining room is a great size with double doors opening onto a conservatory. Adjacent is the separate, modern kitchen which is well-appointed with an array of fitted units providing ample storage cupboards. Integrated appliances include double oven, gas hob, extractor and dishwasher.

At the front of the property, the double bedroom is an excellent size with large fitted wardrobes and the same attractive flooring as the hall, while situated opposite is a smart shower room

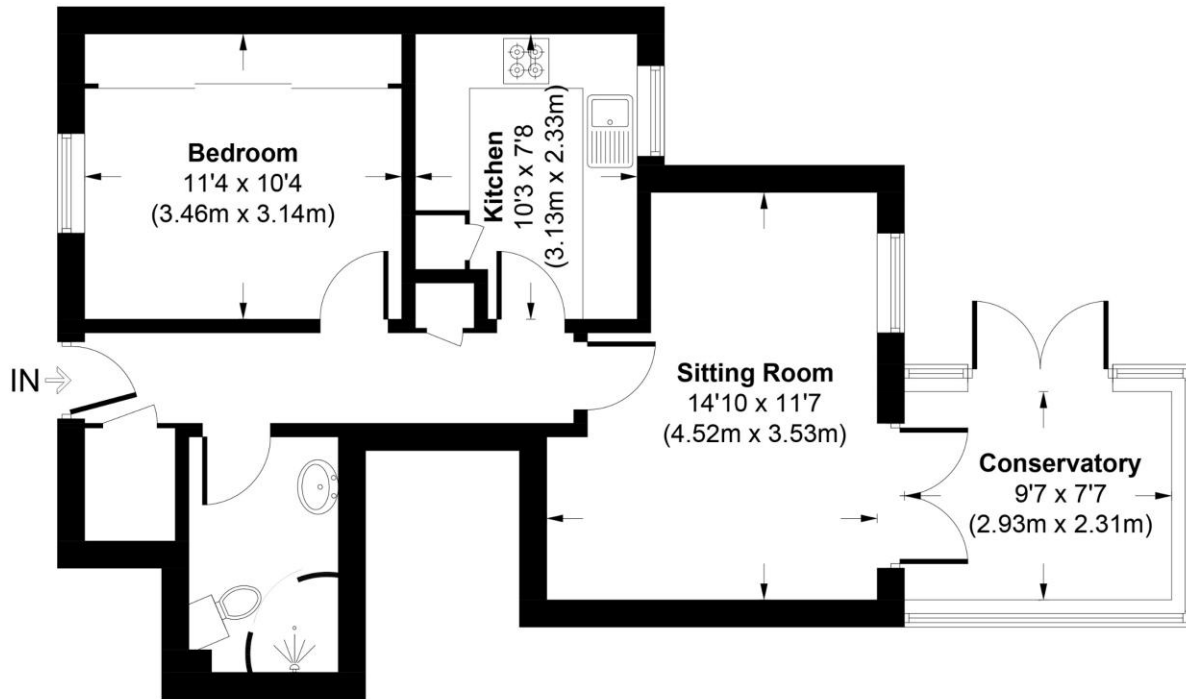
The property benefits from its own attractive, low maintenance, rear garden which is smartly paved with block-brick, accessed from the conservatory. There is allocated parking.





Bentley Close, SO23 7FG

Approximate Gross Internal Area = 581 Sq Ft / 54.0 Sq M



GROUND FLOOR

This plan is for illustrative purposes only and is not to scale. If specified, the Gross Internal Area (GIA), dimensions, North point orientation and the size and placement of features are approximate and should not be relied on as a statement of fact. No guarantee is given for the GIA and no responsibility is taken for any error, omission or misrepresentation.

Benhams, Bentley Close, Kings Worthy, Winchester, Hampshire, SO23 7FG

Directions

Leaving Winchester on the Andover Road, take the first right hand turn into Worthy Lane (B3047). After approximately 2 miles, turn left into Bedfield Lane. At the junction turn right into Springsvale Road and take the first left into Bentley Close. Benhams can be found on the left hand side, on the corner of Glendee Close.

Location

Bentley Close is in the heart of the village of Kings Worthy and a short distance from Kings Worthy Primary School. Locally there are two public houses, a Tesco Express, post office and farm shop/café. Kings Worthy is an excellent location for access to the A34, A33 and M3 motorway. The City of Winchester is a short distance away, with its mainline railway station (links to London Waterloo in about 60 minutes), high street shops, boutiques, library, coffee shops, public houses, restaurants, theatre, cinema, museums and, of course, the City's historic cathedral.

COUNCIL TAX: Band B. Winchester City Council.

SERVICES: Mains Gas, Electricity, Water & Drainage.

BROADBAND: Superfast Broadband Available. FTTC (Fibre to the Cabinet). Checked on Openreach April 2025.

MOBILE SIGNAL: Coverage With Certain Providers.

HEATING: Mains Gas Central Heating.

TENURE:

EPC RATING: C

PARKING: Allocated parking

Viewings

Strictly by appointment with Winkworth Winchester Office

[Winkworth.co.uk/winchester](https://www.winkworth.co.uk/winchester)

Winkworth Winchester

72 High Street, Winchester, SO23 9DA
01962 866 777 | winchester@winkworth.co.uk

Winkworth Country House Department

13 Charles II Street, St James's, London, SW1Y 4QU
020 7870 4878 | countryhouse@winkworth.co.uk

Winkworth

See things differently