



THAMES COURT, READING, BERKSHIRE, RG1 8QT
£1,995 PER MONTH FURNISHED

MODERN TWO BEDROOM GROUND FLOOR RIVERSIDE APARTMENT WITH VIEWS OVER THE RIVER THAMES.

Reading | 0118 4022 300 | reading@winkworth.co.uk

Winkworth

for every step...

winkworth.co.uk



DESCRIPTION:

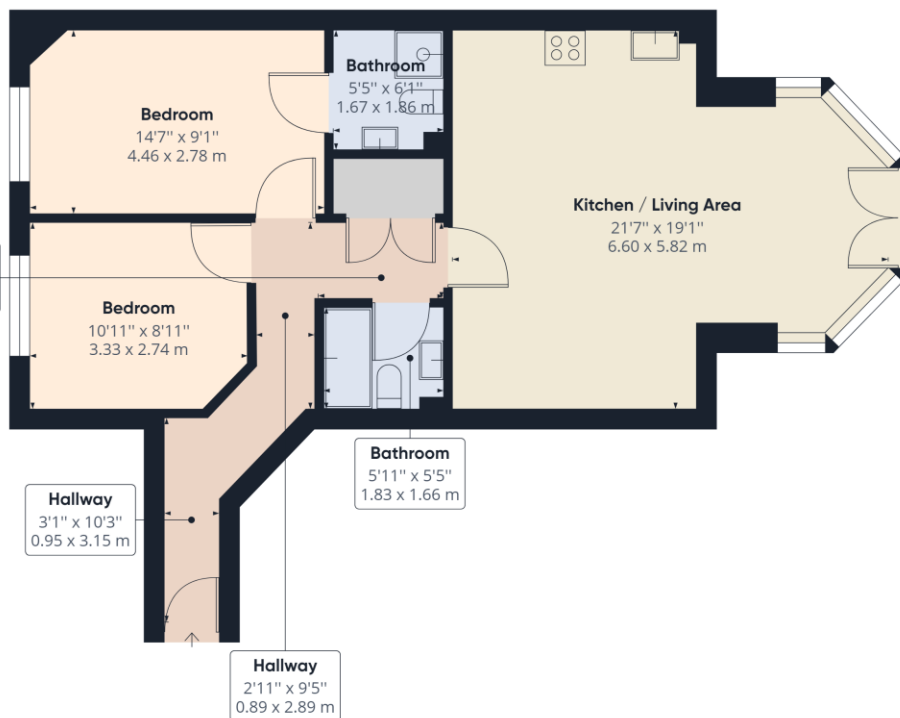
Modern two bedroom ground floor riverside apartment located close to Reading train station. Offering stunning views over the River Thames, this superb property would suit professional tenants seeking convenient accommodation close to Reading station and the town centre. Accommodation comprises two double bedrooms, two bathrooms and a spacious open plan living area with double doors opening onto a riverside patio area within the attractive communal gardens. The property further benefits from a modern fitted kitchen with granite work surfaces, gas central heating and a secure allocated parking accessed via electronic gates. Available 22nd August 2025. Furnished.

AT A GLANCE

- Two Bedroom Riverside Apartment
- Located close to Reading train station
- Overlooking the River Thames
- Council tax band D
- Secure Gated Off Road Parking Space
- Available 22nd August
- Furnished







Approximate total area⁽¹⁾
747.07 ft²
69.40 m²

(1) Excluding balconies and terraces

While every attempt has been made to ensure accuracy, all measurements are approximate, not to scale. This floor plan is for illustrative purposes only.

GIRAFFE 360

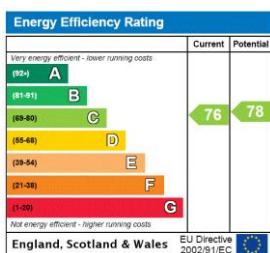
This floorplan is for illustration purposes only and is not to scale. The position and size of doors, windows, appliances and other features are approximate.

Deposit: £2,301.92

Holding Deposit: £460.38

Council Tax Band: D

Where no figures are shown, we have been unable to ascertain the information. All figures that are shown were correct at the time of printing.



Reading | 0118 4022 300 | reading@winkworth.co.uk

Winkworth

for every step...

winkworth.co.uk

Winkworth wishes to inform prospective buyers and tenants that these particulars are a guide and act as information only. All our details are given in good faith and believed to be correct at the time of printing but they don't form part of an offer or contract. No Winkworth employee has authority to make or give any representation or warranty in relation to this property. All fixtures and fittings, whether fitted or not are deemed removable by the vendor unless stated otherwise and room sizes are measured between internal wall surfaces, including furnishings.