



**TUNNEL AVENUE, GREENWICH, LONDON, SE10**  
**GUIDE PRICE £500,000-£525,000 FREEHOLD**

**WE ARE PLEASED TO OFFER THIS GOOD SIZED  
 THREE BEDROOM DOUBLE FRONTED HOUSE,  
 THAT MEASURES CIRCA 1090 SQ FT, LOCATED  
 ON THIS POPULAR ROAD IN EAST GREENWICH.**

Greenwich | 02030533033 | [greenwich@winkworth.co.uk](mailto:greenwich@winkworth.co.uk)

**Winkworth**

*[winkworth.co.uk](http://winkworth.co.uk)*

See things differently





## DESCRIPTION:

Guide Price £500,000-£525,000. We are pleased to offer this good sized three bedroom double fronted house, that measures circa 1090 sq ft, located on this popular road in East Greenwich.

Its certainly worth mentioning that in our opinion the property would hugely benefit from a refurbishment! Featuring off street parking to the front, the accommodation comprises of a bedroom and large reception on the ground floor, with a 23ft kitchen diner to the rear, as part of the extension. Upstairs there are a further two bedrooms and a bathroom. To the rear is a large north east facing garden.

As mentioned Tunnel Avenue is located in East Greenwich and lies very close to the industrial park in Charlton, which offers a wide variety of shops, including Sainsbury, Ikea and M&S. The O2 Arena with jubilee line and cable car is also close by, as is the town centre and Royal Park.

## AT A GLANCE

- double fronted house
- off street parking
- requires updating
- 2/3 bedrooms
- 1/2 reception rooms
- circa 1090 sq ft
- East Greenwich location
- close to O2 arena
- close to retail park

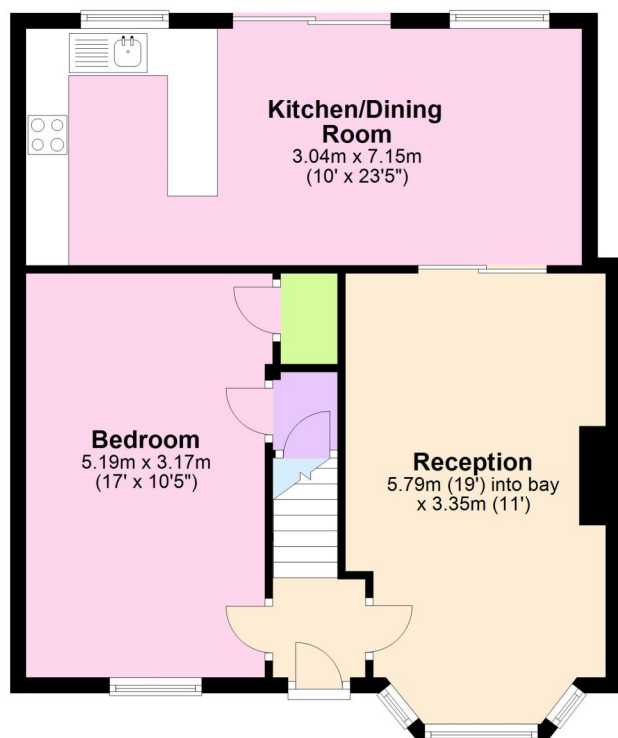






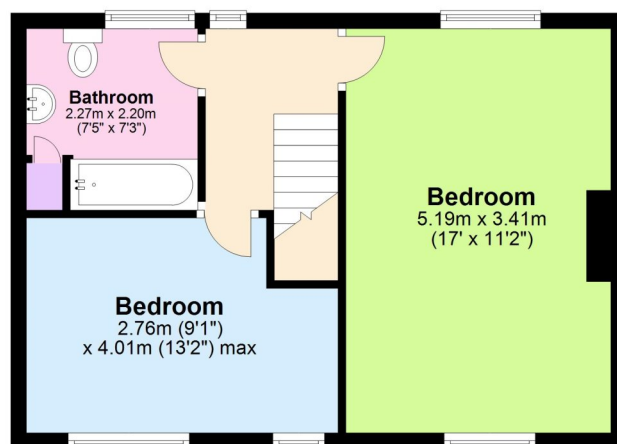
## Ground Floor

Approx. 62.3 sq. metres (671.0 sq. feet)



## First Floor

Approx. 38.9 sq. metres (419.0 sq. feet)



Total area: approx. 101.3 sq. metres (1090.0 sq. feet)

This floorplan is for illustration purposes only and is not to scale. The position and size of doors, windows, appliances and other features are approximate.

Greenwich | 02030533033 | [greenwich@winkworth.co.uk](mailto:greenwich@winkworth.co.uk)

**Winkworth**

[winkworth.co.uk](http://winkworth.co.uk)

See things differently

Winkworth wishes to inform prospective buyers and tenants that these particulars are a guide and act as information only. All our details are given in good faith and believed to be correct at the time of printing but they don't form part of an offer or contract. No Winkworth employee has authority to make or give any representation or warranty in relation to this property. All fixtures and fittings, whether fitted or not are deemed removable by the vendor unless stated otherwise and room sizes are measured between internal wall surfaces, including furnishings.