



14A THE CLOSE, SALISBURY, WILTSHIRE, SP1  
GUIDE PRICE £2,500,000 FREEHOLD

Winkworth



## FIELDING HOUSE, 14A THE CLOSE, SALISBURY, WILTSHIRE, SP1 2EB

An elegant Grade II\* Listed house lived in by Charlotte Cradock, wife of Henry Fielding and the inspiration for the character Sophia Western in the novel, Tom Jones.

Fielding House is a Grade II\* Listed freehold terraced/attached house in the historic Close (the exquisite walled enclave which surrounds Salisbury Cathedral). Charlotte Cradock, who lived at 14a The Close, was the inspiration for the character Sophia Western in the Henry Fielding novel, Tom Jones. She was living in the Close when she met him, and they fell in love. She married Fielding in 1734.

The property provides well-balanced accommodation across three floors, beautifully presented and as per the indicative floor plans and 3D Matterport tour.

Of particular note is the fine, first floor drawing room and the wonderful walled garden to the south. There is a southerly terrace with an electrically operated awning, allowing al fresco dining in a charming space with a resplendent rose garden. The garden is walled by the historic boundary wall of The Close, which borders Exeter Street along the eastern side.

**Agents note:** the property is understood to be subject to a flying freehold (servient to the dental practise to the left, shown with the red door in the front photograph) further details to follow. The door to the right is for 13 The Close, i.e., the access to Fielding House is via the front door only. The vendor advises us they currently lease three parking spaces by a separate arrangement. **N.B.** The basement access is via a hatch beneath the stairs and is a space for storing wine or such. Wiltshire Council Tax Band – G

### LOCATION

Situated on the eastern side of The Close, the nearest gate is St Ann Gate. The Close is a conservation area and is understood to be the largest Cathedral Close in Britain, extending to around 80 acres. Yet this oasis in the heart of the city is within easy reach of a wide range of facilities, schools, and transport links. The station (around a fifteen minutes' walk, according to Google Maps) and several surrounding schools are within walking distance, along the largely level streets of the medieval grid pattern design of Salisbury. Salisbury Cathedral School and Bishop Wordsworth's School, in particular, are close by.

### DIRECTIONS

Upon entering The North Walk of The Close via St Ann's Gate, the property is the second house on the left.

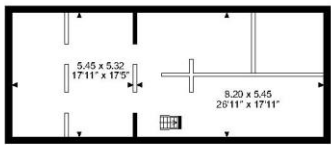
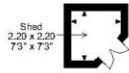
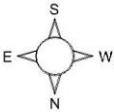




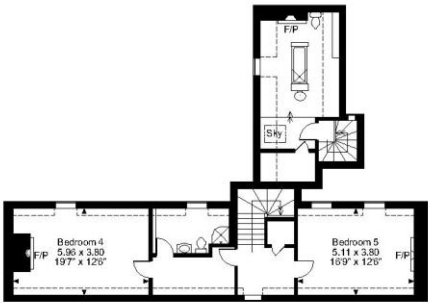




Fielding House, 14a The Close, Salisbury SP1 2EB  
 Approximate Gross Internal Area  
 Main House = 6165 Sq Ft/573 Sq M  
 Shed = 44 Sq Ft/4 Sq M  
 Total = 6209 Sq Ft/577 Sq M



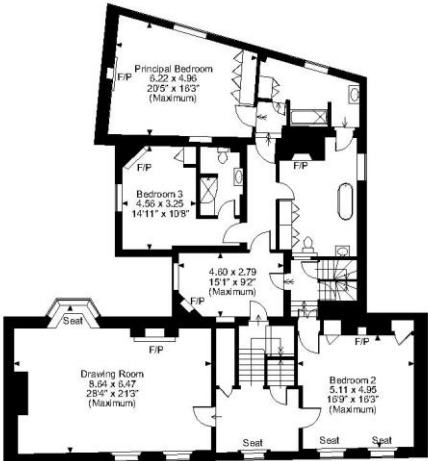
Basement



Second Floor

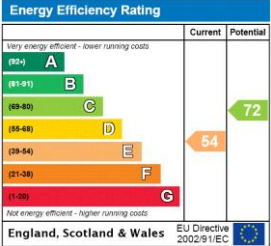


Ground Floor



First Floor

**FOR ILLUSTRATIVE PURPOSES ONLY - NOT TO SCALE**  
 The position & size of doors, windows, appliances and other features are approximate only.  
 □ □ □ □ Denotes restricted head height  
 © ehouse. Unauthorised reproduction prohibited. Drawing ref. dig/8507421/JPN



Salisbury | 01722 443 000 | salisbury@winkworth.co.uk

winkworth.co.uk

Winkworth wishes to inform prospective buyers and tenants that these particulars are a guide and act as information only. All our details are given in good faith and believed to be correct at the time of printing but they don't form part of an offer or contract. No Winkworth employee has authority to make or give any representation or warranty in relation to this property. All fixtures and fittings, whether fitted or not are deemed removable by the vendor unless stated otherwise and room sizes are measured between internal wall surfaces, including furnishings.

