



LONGLEY ROAD, SW17
£420,000 SHARE OF FREEHOLD

A SPACIOUS AND CHARMING ONE DOUBLE BEDROOM FLAT.

Tooting | 020 8767 5221 | tooting@winkworth.co.uk

Winkworth

for every step...

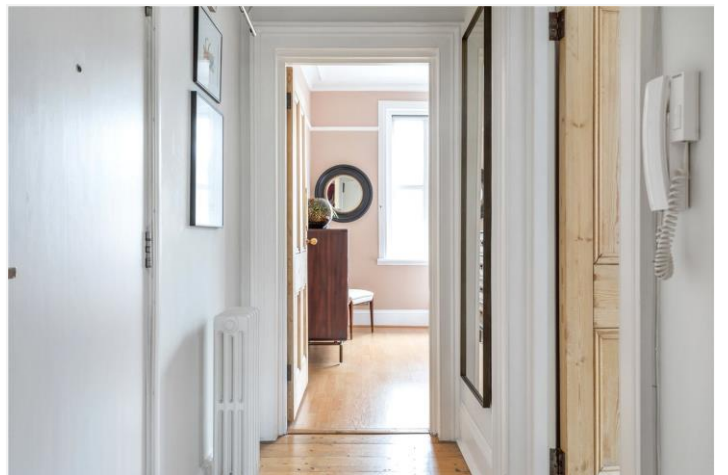
winkworth.co.uk



DESCRIPTION:

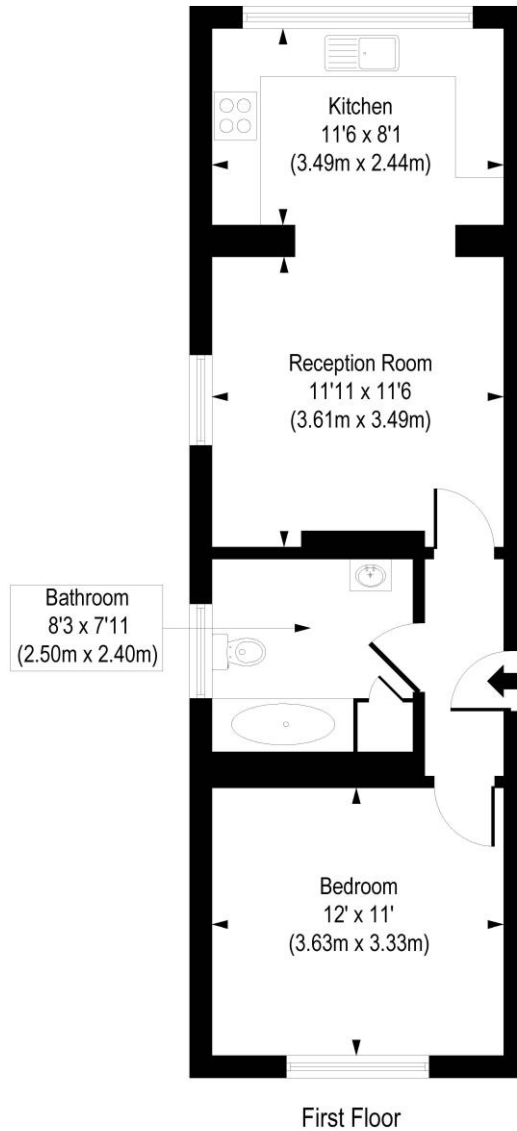
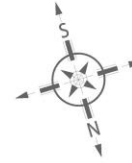
Nestled in the heart of Tooting Broadway, this charming first floor one-bedroom flat boasts a delightful blend of space and style. Boasting a modern bathroom, a generously-sized double bedroom, and a reception room adorned with original wooden floors and a period fireplace, seamlessly leading into a bright and airy kitchen, this property offers both comfort and style.

Included with a share of the freehold and the convenience of off-street parking, residents of Longley Road enjoy easy access to Tooting Broadway's Northern Line Tube link, the Tooting overground Thames Link, and a plethora of local shopping amenities.



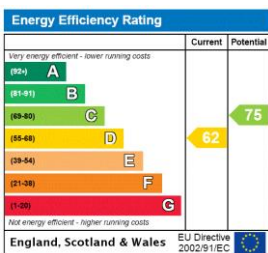
Gosford House, SW17

Approx. Gross Internal Floor Area 499 sq. ft / 46.39 sq. m



COMPLIANT WITH RICS CODE OF MEASURING PRACTICE. Floorplan is for illustrative purposes only and is not to scale. Every attempt has been made to ensure the accuracy of the floorplan shown, however all measurements, fixtures, fittings and data shown are an approximate interpretation for illustrative purposes only. Liability for errors, omissions or mis-statement through negligence or otherwise is hereby excluded.

This floorplan is for illustration purposes only and is not to scale. The position and size of doors, windows, appliances and other features are approximate.



Tooting | 020 8767 5221 | tooting@winkworth.co.uk

for every step...

winkworth.co.uk

Winkworth wishes to inform prospective buyers and tenants that these particulars are a guide and act as information only. All our details are given in good faith and believed to be correct at the time of printing but they don't form part of an offer or contract. No Winkworth employee has authority to make or give any representation or warranty in relation to this property. All fixtures and fittings, whether fitted or not are deemed removable by the vendor unless stated otherwise and room sizes are measured between internal wall surfaces, including furnishings.