

OXFORD ROAD, BERKSHIRE, RG30

£250,000 FREEHOLD

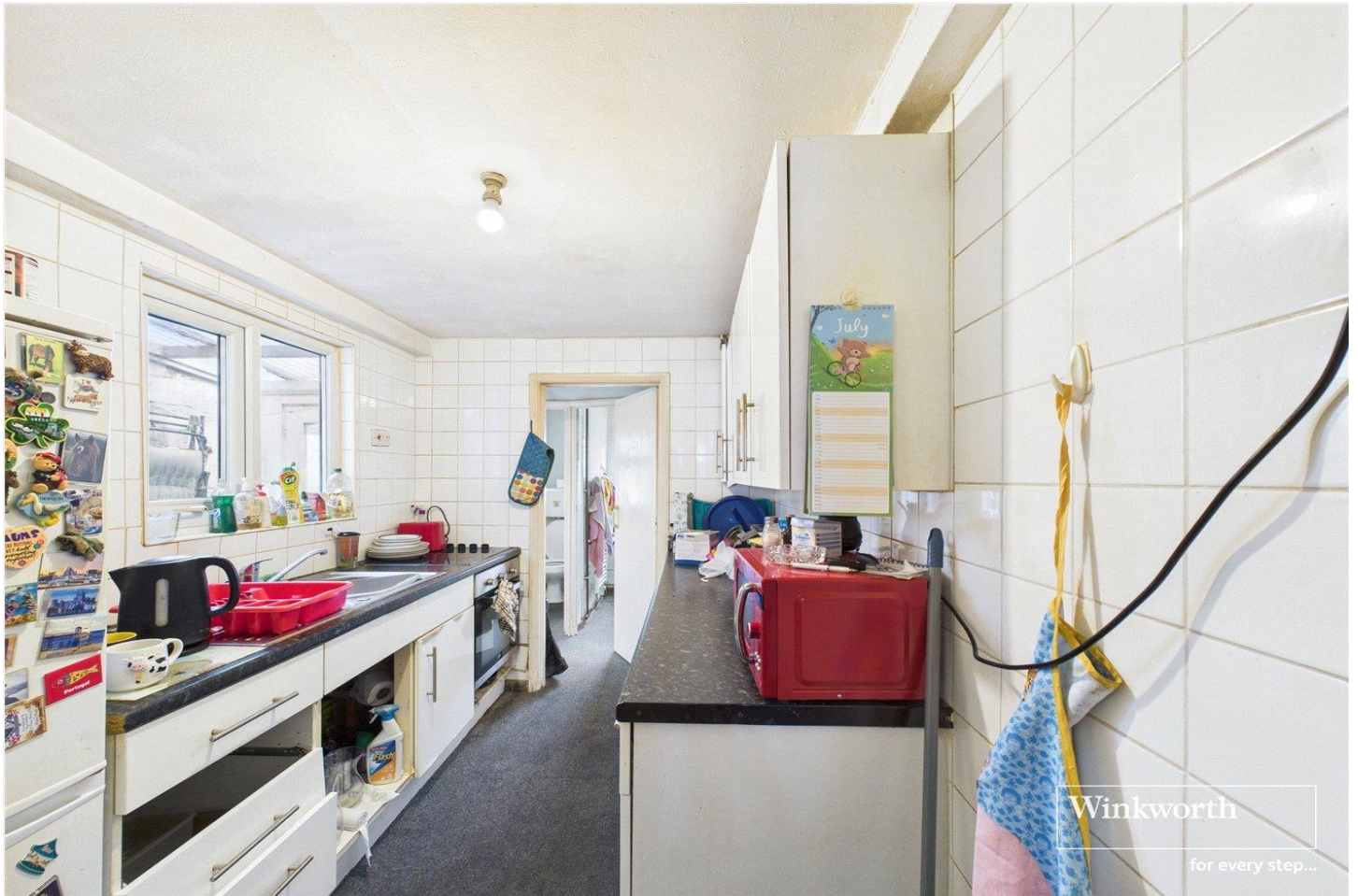
TWO+ONE BEDROOM MID TERRACE IN NEED OF GENERAL UPDATING

Reading | 0118 4022 300 | reading@winkworth.co.uk

Winkworth

for every step...

winkworth.co.uk



DESCRIPTION:

This Victorian mid terrace property is located with ease of access to shops, bus routes into Reading, schools and other local amenities. The property is in need of general modernisation and updating.

The property comprises an entrance hall, living room, dining room, kitchen, lobby area, WC, ground floor shower room, lean to, landing and three bedrooms (the 3rd bedroom being off Bedroom 2).

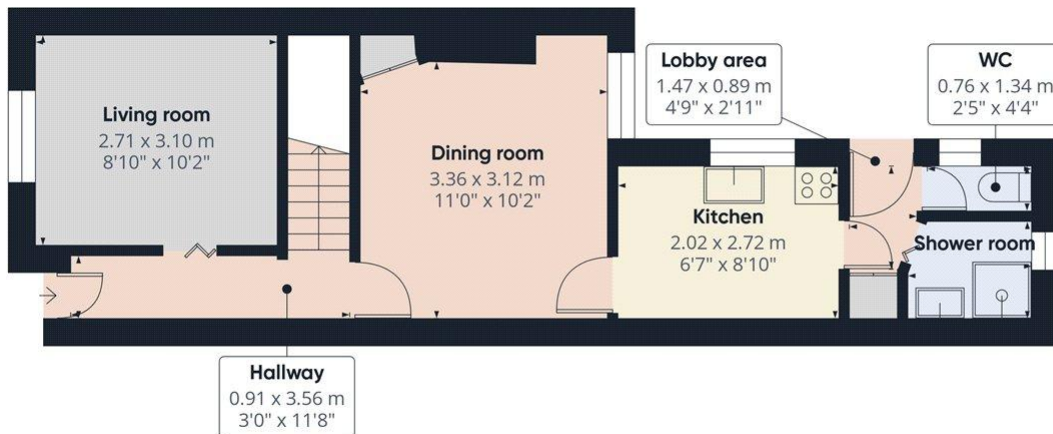
To the rear is an enclosed 40ft garden.

AT A GLANCE

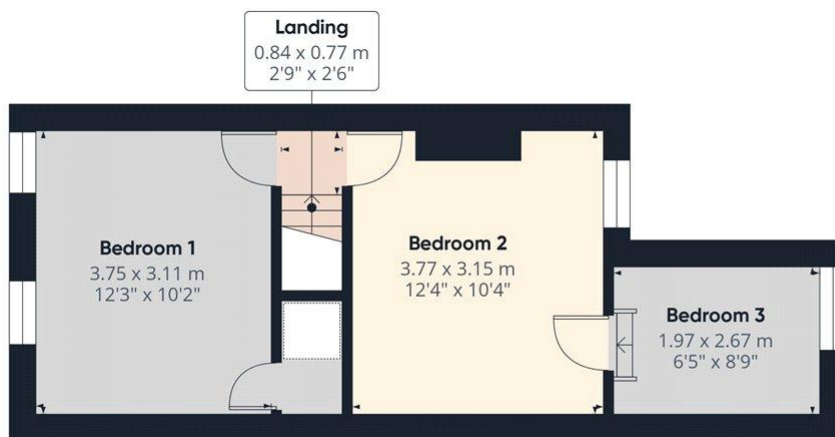
- Two+one bedroom house
- Living room
- Dining room
- Kitchen
- Ground floor shower room
- 40ft rear garden
- Property requires updating







Ground Floor



Floor 1

Winkworth

Approximate total area⁽¹⁾
64.9 m²
698 ft²

(1) Excluding balconies and terraces

Calculations reference the RICS IPMS 3C standard. Measurements are approximate and not to scale. This floor plan is intended for illustration only.

GIRAFFE360

This floorplan is for illustration purposes only and is not to scale. The position and size of doors, windows, appliances and other features are approximate.

Tenure: Freehold

Council Tax Band: B

Where no figures are shown, we have been unable to ascertain the information. All figures that are shown were correct at the time of printing.

Reading | 0118 4022 300 | reading@winkworth.co.uk

Winkworth

for every step...

winkworth.co.uk

Winkworth wishes to inform prospective buyers and tenants that these particulars are a guide and act as information only. All our details are given in good faith and believed to be correct at the time of printing but they don't form part of an offer or contract. No Winkworth employee has authority to make or give any representation or warranty in relation to this property. All fixtures and fittings, whether fitted or not are deemed removable by the vendor unless stated otherwise and room sizes are measured between internal wall surfaces, including furnishings.