



KEW FOOT ROAD, TW9

£585,000 FREEHOLD

TWO DOUBLE BEDROOM VICTORIAN COTTAGE

Chiswick | 020 8994 7096 | chiswick@winkworth.co.uk

Winkworth

for every step...

winkworth.co.uk



DESCRIPTION:

An end of terrace, early Victorian residence with two double bedrooms and first floor bathroom, a through reception room into the kitchen area and a small courtyard.

Idyllically nestled at the end of a charming mews adjacent to the open spaces of Old Deer Park home to Pools on the Park and bordering beautiful Kew Gardens and Royal Mid Surrey golf course. Richmond Green, the River Thames and the lovely open spaces of Richmond Park are within close proximity.

Central Richmond with its eclectic choice of eateries and shops plus two cinemas and Victorian theatre are all within very easy reach and the smart commuter will benefit from Richmond Station's direct service into London, Waterloo, District Line Tube and the North London overground service to North London and Stratford. (Zone 4).

The cottage has been priced to allow for some improvements and is offered with no onward chain.

Council tax: Band D - Richmond Upon Thames borough

ACCOMMODATION

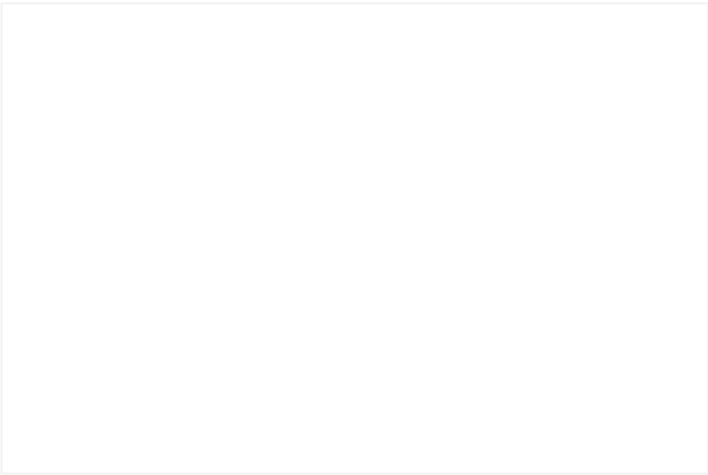
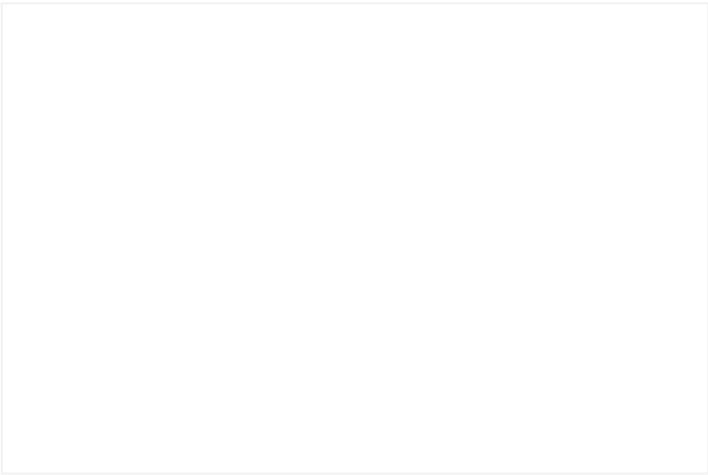
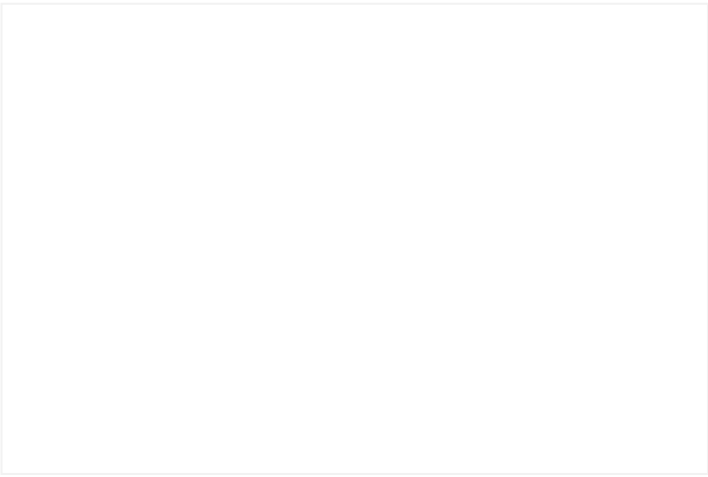
Freehold

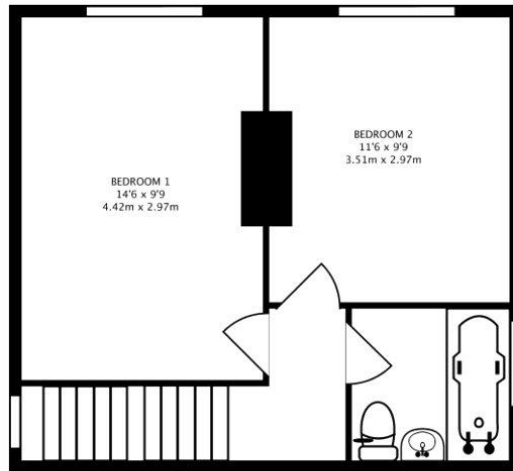
End of Terrace

Residents Parking

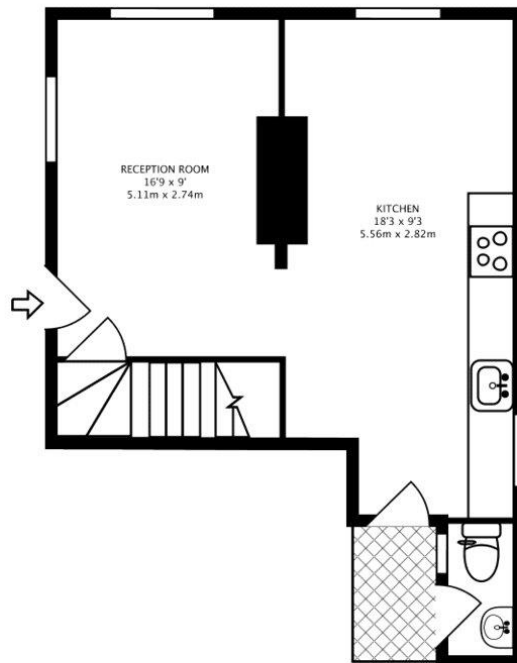
Period

Fair decoration



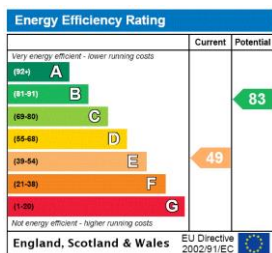


FIRST FLOOR GROSS INTERNAL FLOOR AREA
346 SQ FT/32.19 SQ M



GROUND FLOOR GROSS INTERNAL FLOOR AREA
342 SQ FT/31.76 SQ M

This floorplan is for illustration purposes only and is not to scale. The position and size of doors, windows, appliances and other features are approximate.



Chiswick | 020 8994 7096 | chiswick@winkworth.co.uk

Winkworth

for every step...

winkworth.co.uk

Winkworth wishes to inform prospective buyers and tenants that these particulars are a guide and act as information only. All our details are given in good faith and believed to be correct at the time of printing but they don't form part of an offer or contract. No Winkworth employee has authority to make or give any representation or warranty in relation to this property. All fixtures and fittings, whether fitted or not are deemed removable by the vendor unless stated otherwise and room sizes are measured between internal wall surfaces, including furnishings.