



- TWO BEDROOMS
- TERRACED HOUSE
- ROE GREEN VILLAGE  
(CONSERVATION AREA)
- GORGEOUS GARDEN
- CLOSE TO SCHOOL & AMENITIES

ROE LANE, LONDON, NW9  
**£530,000 FREEHOLD**

## CHARMING TWO-BEDROOM COTTAGE IN ROE GREEN VILLAGE

Kingsbury | 020 8204 0000 | [kingsbury@winkworth.co.uk](mailto:kingsbury@winkworth.co.uk)

**Winkworth**

for every step...

[winkworth.co.uk](https://www.winkworth.co.uk)





## DESCRIPTION:

Positioned in the serene and characterful Roe Green Village conservation area in Kingsbury, this well-maintained two-bedroom mid-terrace family home offers a warm and inviting atmosphere. Ideal for first-time buyers and young families, the property is set in a quiet, leafy enclave known for its community spirit and natural surroundings. Inside, you'll find a bright and comfortable living room with direct access to the generous rear garden—perfect for unwinding or entertaining outdoors. The modern kitchen is open plan with a dining area, creating a sociable and functional space for everyday living.



**Winkworth**

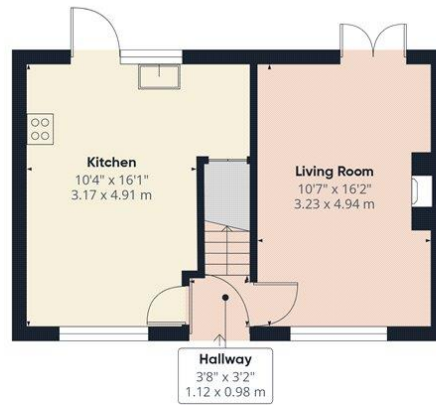
for every step...



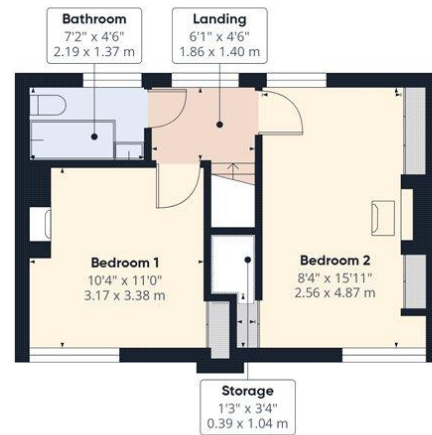
**Winkworth**

for every step...

**Winkworth**



Ground Floor



Floor 1

**Approximate total area<sup>(1)</sup>**  
720 ft<sup>2</sup>  
67 m<sup>2</sup>

(1) Excluding balconies and terraces

Calculations reference the RICS IPMS 3C standard. Measurements are approximate and not to scale. This floor plan is intended for illustration only.

GIRAFFE 360

This floorplan is for illustration purposes only and is not to scale. The position and size of doors, windows, appliances and other features are approximate.

EPC rating coming soon



**Tenure:** Freehold

**Council Tax Band:** D

**Kingsbury** | 020 8204 0000 | [kingsbury@winkworth.co.uk](mailto:kingsbury@winkworth.co.uk)

**Winkworth**

**for every step...**

**winkworth.co.uk**

Winkworth wishes to inform prospective buyers and tenants that these particulars are a guide and act as information only. All our details are given in good faith and believed to be correct at the time of printing but they don't form part of an offer or contract. No Winkworth employee has authority to make or give any representation or warranty in relation to this property. All fixtures and fittings, whether fitted or not are deemed removable by the vendor unless stated otherwise and room sizes are measured between internal wall surfaces, including furnishings.