



HONEYPOT LANE, KINGSBURY, LONDON, NW9

OFFERS IN EXCESS OF £350,000 SHARE OF FREEHOLD. OVER 900 YEARS REMAINING ON LEASE

**2 BEDROOM MAISONETTE IN A PRIME LOCATION
WITH OFF STREET PARKING, GARAGE AND
PRIVATE GARDEN**

Kingsbury | 020 8204 0000 | kingsbury@winkworth.co.uk

Winkworth

for every step...

winkworth.co.uk



DESCRIPTION: A well-presented first-floor maisonette, ideally located with the heart of Kingsbury right at your doorstep. Offering share of freehold tenure, with over 900 years remaining on the leasehold, this property is perfect as a first home, or as a buy-to-let investment. Inside, you'll find two well-proportioned bedrooms, a bright and spacious lounge, a functional kitchen, and a well-appointed bathroom. Externally, the property benefits from a private garden, off street parking, and a garage. Added bonuses include no service charge and no ground rent payable — making this an even more attractive opportunity. Commuters will appreciate the proximity to Kingsbury Station (Jubilee Line) a few minutes' walk away. An internal viewing is advised.

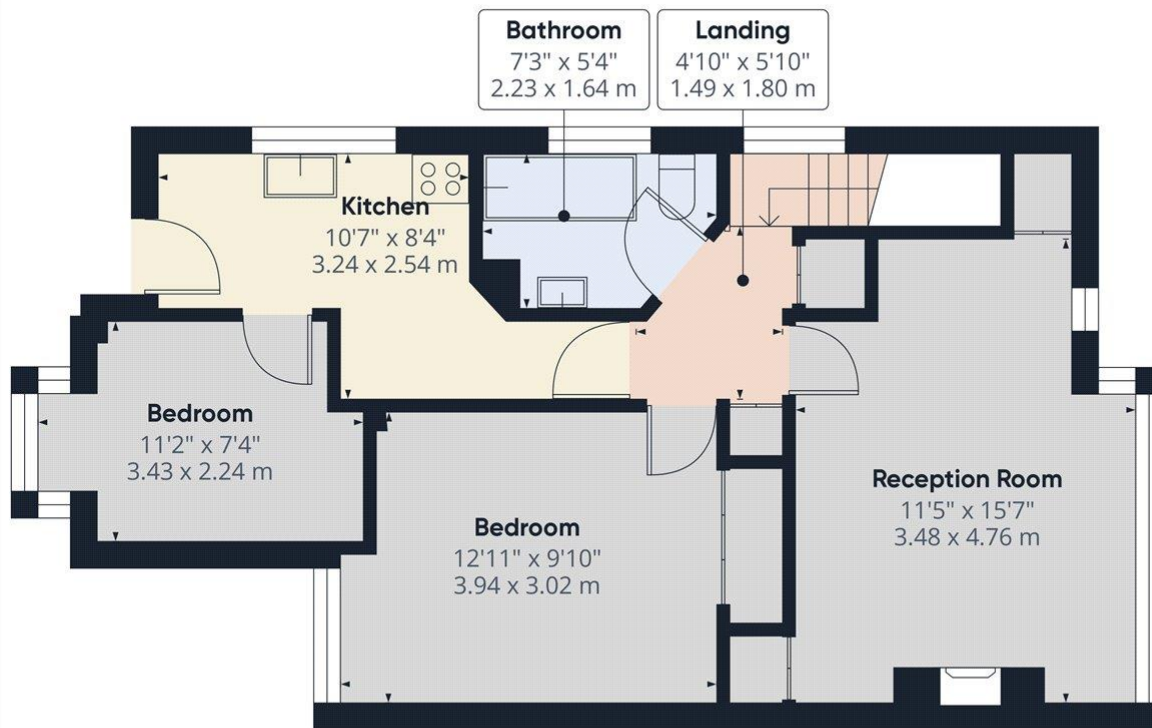


Winkworth

for every step...



Winkworth
for every step...



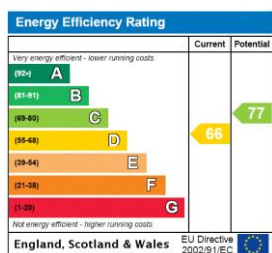
Approximate total area⁽¹⁾
529.8 ft²
49.22 m²

(1) Excluding balconies and terraces

While every attempt has been made to ensure accuracy, all measurements are approximate, not to scale. This floor plan is for illustrative purposes only. Calculations are based on RICS IPMS 3C standard.

GIRAFFE360

This floorplan is for illustration purposes only and is not to scale. The position and size of doors, windows, appliances and other features are approximate.



Tenure: Share of Freehold

Service Charge: £0 Annually

Ground Rent: £0 Annually

Council Tax Band: C - Harrow

Where no figures are shown, we have been unable to ascertain the information. All figures that are shown were correct at the time of printing.

Winkworth

Kingsbury | 020 8204 0000 | kingsbury@winkworth.co.uk

for every step...

winkworth.co.uk

Winkworth wishes to inform prospective buyers and tenants that these particulars are a guide and act as information only. All our details are given in good faith and believed to be correct at the time of printing but they don't form part of an offer or contract. No Winkworth employee has authority to make or give any representation or warranty in relation to this property. All fixtures and fittings, whether fitted or not are deemed removable by the vendor unless stated otherwise and room sizes are measured between internal wall surfaces, including furnishings.