



5 HUNTSGREEN COURT, BRACKNELL, BERKSHIRE, RG12 9AQ
£185,000 LEASEHOLD

AN INDEPENDENT LIVING RETIREMENT DEVELOPMENT FOR THOSE AGED 55 AND OVER

Winkworth

Wokingham | 01189 072777 | wokingham@winkworth.co.uk

for every step...

winkworth.co.uk



DESCRIPTION:

The property is located close to Bracknell town centre and next door to a local doctors` surgery.

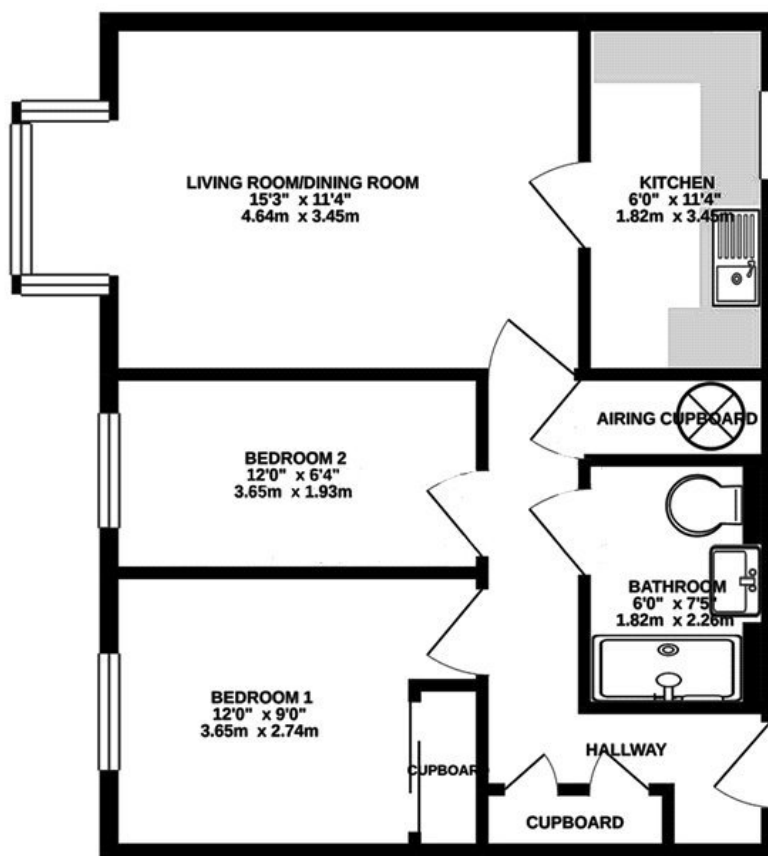
This ground floor apartment has a spacious hall with built in storage cupboards, a generous lounge with bay window and feature electric fireplace, modern fitted kitchen, two bedrooms with built in wardrobes to the master and modern shower room.

The Town Centre has lots to offer, including retail shops, coffee shops, a cinema, restaurants, buses and mainline train stations. Despite being an urban development, Huntsgreen Court still benefits from an attractive front and side garden and private parking on a first come first served basis.

AT A GLANCE

- Over 55's retirement apartment
- Ground Floor
- No onward Chain
- 2 Bedrooms
- Council tax band C Bracknell Forest
- 60 year lease remaining expires 25/03/86
- Service charge £350.58 per month
- Ultrafast broadband 309Mbps
- Mobile coverage EE, Vodafone, Three & O2
- Satellite/Fibre TV available BT & Sky





GROUND FLOOR
582 sq. ft. (54.1 sq. m.) approx.

This floorplan is for illustration purposes only and is not to scale. The position and size of doors, windows, appliances and other features are approximate.

Score	Energy rating	Current	Potential
92+	A		
81-91	B		
69-80	C		
55-68	D	64 D	75 C
39-54	E		
21-38	F		
1-20	G		

Wokingham | 01189 072777 | wokingham@winkworth.co.uk

winkworth.co.uk

Winkworth wishes to inform prospective buyers and tenants that these particulars are a guide and act as information only. All our details are given in good faith and believed to be correct at the time of printing but they don't form part of an offer or contract. No Winkworth employee has authority to make or give any representation or warranty in relation to this property. All fixtures and fittings, whether fitted or not are deemed removable by the vendor unless stated otherwise and room sizes are measured between internal wall surfaces, including furnishings.

We are required by law to conduct anti-money laundering checks on all those buying a property. Whilst we retain responsibility for ensuring checks and any ongoing monitoring are carried out correctly, the initial checks are carried out on our behalf by Landmark who will contact you once you have had an offer accepted on a property you wish to buy. The cost of these checks is £15 (plus VAT) per person and this will need to be paid by you in advance of us issuing a memorandum of sale, directly to Landmark, and is non-refundable.