

HIGH STREET, WARGRAVE, BERKSHIRE, RG10 8BY
£225,000 SHARE OF FREEHOLD

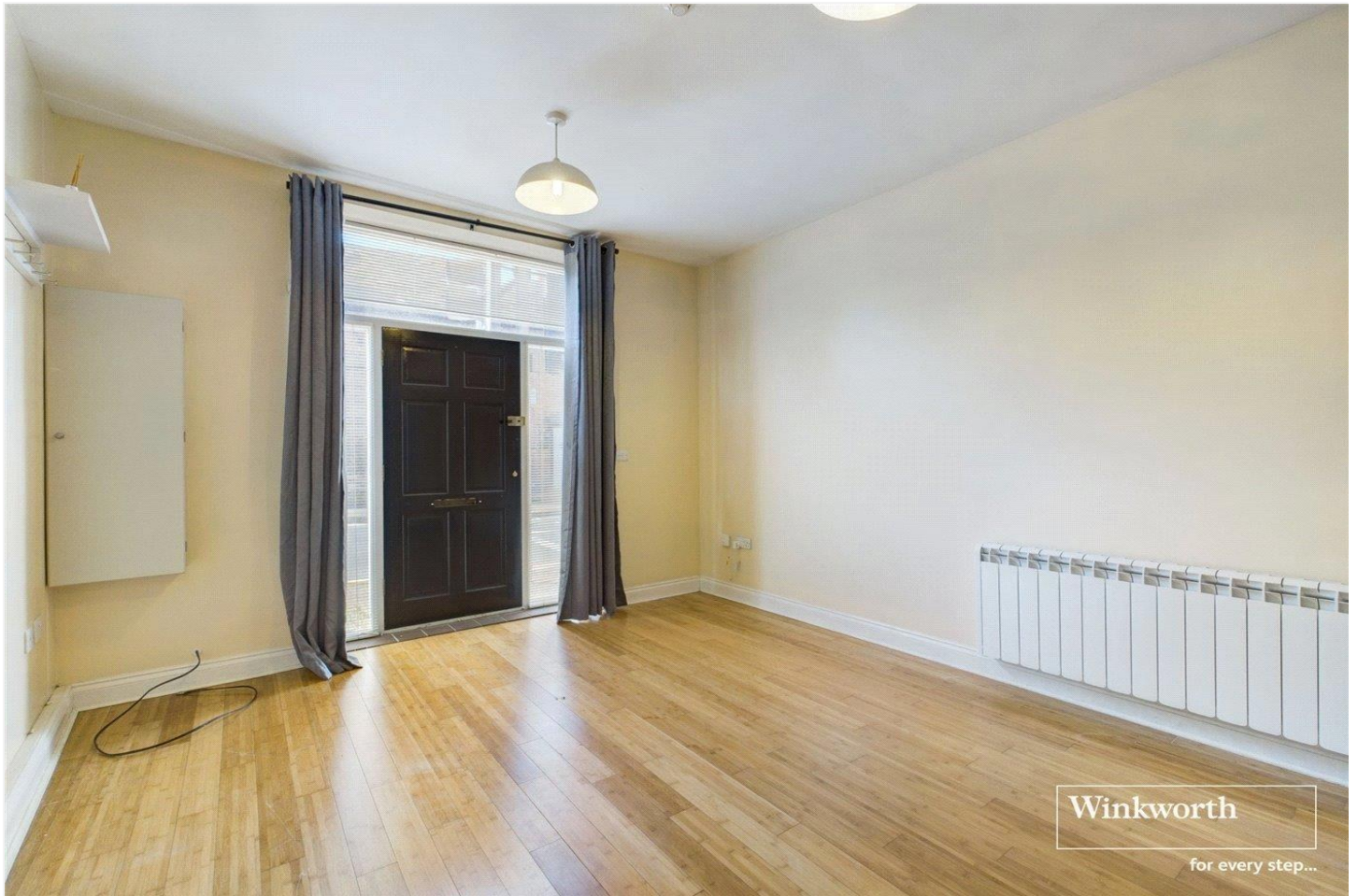
A GROUND FLOOR ONE BEDROOM PROPERTY SITUATED IN THE HEART OF WARGRAVE

Reading | 0118 4022 300 | reading@winkworth.co.uk

Winkworth

for every step...

winkworth.co.uk



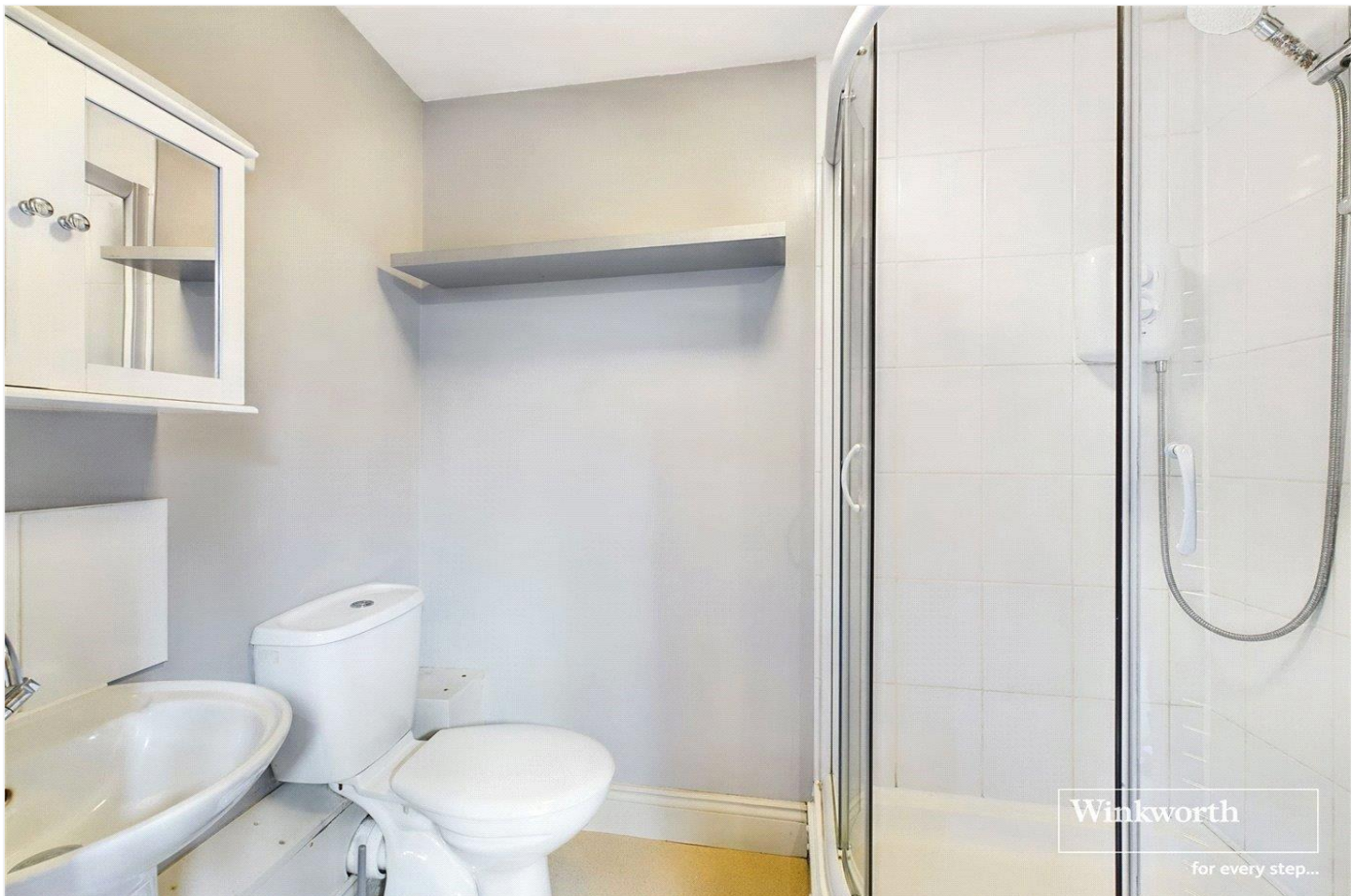
DESCRIPTION:

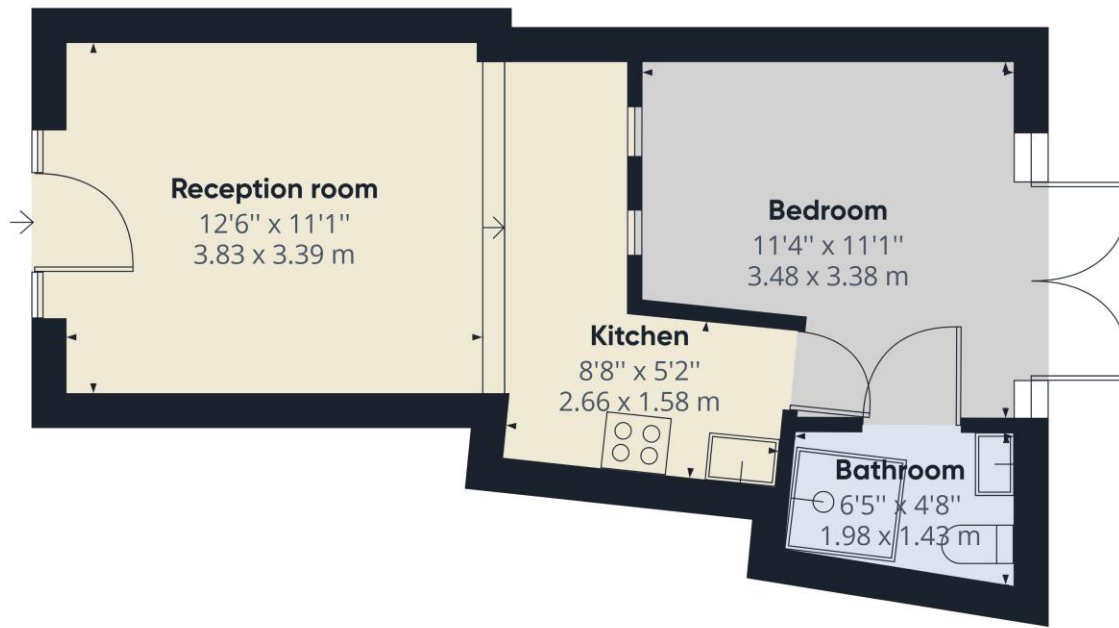
A wonderful ground floor one bedroom property situated in the heart of this sought after village location. The well-appointed accommodation comprises sitting room with a modern fitted kitchen, a double bedroom with double doors opening to a communal courtyard garden. There is a modern en suite shower room. The property is ideally situated within easy walking distance of the train station, the river Thames and a great choice of local pubs .

AT A GLANCE

- Ground floor
- Open plan living area
- Double bedroom
- Communal Courtyard garden
- No parking
- Council tax band B







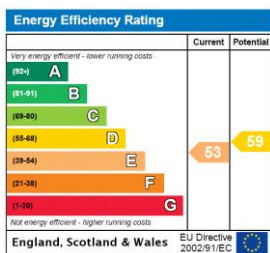
Approximate total area⁽¹⁾
370.69 ft²
34.44 m²

(1) Excluding balconies and terraces

While every attempt has been made to ensure accuracy, all measurements are approximate, not to scale. This floor plan is for illustrative purposes only.

GIRAFFE360

This floorplan is for illustration purposes only and is not to scale. The position and size of doors, windows, appliances and other features are approximate.



Tenure: Share of Freehold
Term: Expires - 01/01/3010
Service Charge: £580 per annum
Ground Rent: £ 0
Council Tax Band: B

Where no figures are shown, we have been unable to ascertain the information. All figures that are shown were correct at the time of printing.

Winkworth

Reading | 0118 4022 300 | reading@winkworth.co.uk

for every step...

winkworth.co.uk

Winkworth wishes to inform prospective buyers and tenants that these particulars are a guide and act as information only. All our details are given in good faith and believed to be correct at the time of printing but they don't form part of an offer or contract. No Winkworth employee has authority to make or give any representation or warranty in relation to this property. All fixtures and fittings, whether fitted or not are deemed removable by the vendor unless stated otherwise and room sizes are measured between internal wall surfaces, including furnishings.