



## DUKE OF YORK STREET, SW1Y

£550,000

LEASEHOLD

### At a glance...

- Studio Flat
- Good Condition
- Long Lease
- Top Floor with Lift
- Prestigious St James's Location
- Council Tax Band: E

**Winkworth**

for every step...



Score	Energy rating	Current	Potential
92+	A		
81-91	B		
69-80	C		
55-68	D		63 D
39-54	E	54 E	
21-38	F		
1-20	G		

## DUKE OF YORK STREET, SW1Y

£550,000

LEASEHOLD

An opportunity to acquire a fantastic studio apartment in the heart of St James's.

Located in this well-run period building the flat covers some 273 square feet and is located on the top floor (5th) with lift access. Offering a smart separate kitchen and bathroom and with a dedicated sleeping area separated from the rest of the flat as well as a good amount of storage.

\*The service charges are currently inflated due to exterior works due at the building due to be finished in February 2026.

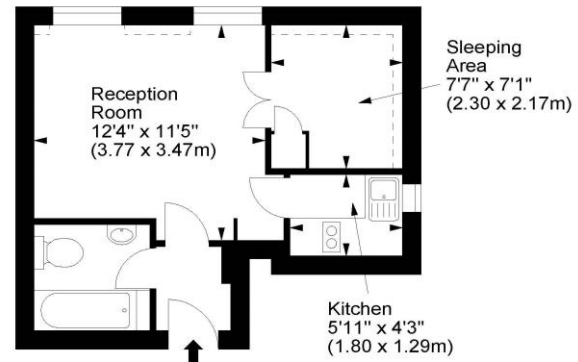
An ideal London pied-a-terre, Duke of York Street runs between Jermyn Street and St James's Square.



winkworth wishes to inform prospective buyers and tenants that these particulars are a guide and act as information only. All our details are given in good faith and believed to be correct at the time of printing but they don't form part of an offer or contract. No winkworth employee has authority to make or give any representation or warranty in relation to this property. All fixtures and fittings, whether fitted or not are deemed removable by the vendor unless stated otherwise and room sizes are measured between internal wall surfaces - including fire-chimneys.

### Duke Of York Street, SW1

Approx. Gross Internal Area  
273 Sq Ft - 25.36 Sq M



Fifth Floor

For illustration purposes only. Not to scale.  
All measurements are taken and shown at floor level.  
www.r3photography.co.uk © Photography / Floor Plans / Lease Plans / EPCs



Pimlico & Westminster

020 7828 1786

pimlico@winkworth.co.uk

winkworth.co.uk/pimlico-westminster

**Winkworth**

for every step...