



## Kensington Park Road, W11

£885,000 *Share of Freehold*



West11 and Winkworth are delighted to introduce Kensington Park Road - a fully renovated raised ground floor apartment in Prime W11, moments from Westbourne Grove.

### KEY FEATURES

- Raised ground floor, 542 sq ft apartment.
- West-facing open-plan living space with high ceilings.
- Parquet flooring throughout.
- Spacious bedroom with built-in wardrobes.
- Stylish en-suite shower room.



**Notting Hill Sales**

0207 727 3227 | [nottinghill@winkworth.co.uk](mailto:nottinghill@winkworth.co.uk)

**Winkworth**

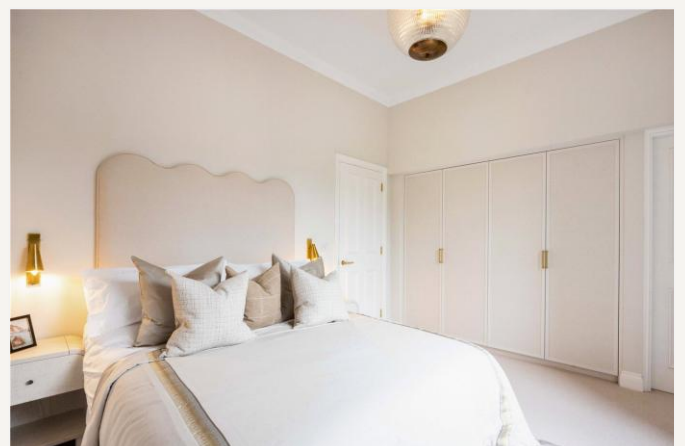
for every step...





Completed to the refined West11 specification, this charming, raised ground floor apartment extends to 542 sq ft. The property opens directly into a bright open-plan reception room and kitchen, featuring wonderfully high ceilings, a large west-facing sash window and beautiful parquet flooring throughout. The generously proportioned bedroom is positioned to the rear and benefits from built-in wardrobes, leading through to a luxuriously finished en-suite shower room.

Kensington Park Road runs North East from Notting Hill Gate. The property is located opposite Stanley Gardens, two minutes from Westbourne Grove and the famous Portobello Road.



MATERIAL INFORMATION

**Tenure:** Share of Freehold  
**Term:** 999 year and 0 months  
**Service Charge:** £2500 per annum  
**Ground Rent:** N/A  
**Council Tax Band:** E (RBKC)  
**EPC rating:** C  
**Is the property listed:** Property is not listed

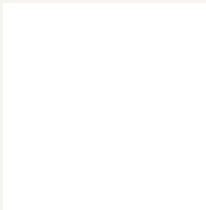
**Utilities:**  
**Electricity supply:** Mains Supply  
**Sewerage supply:** Mains Supply  
**Water supply:** Mains Supply  
**Mobile signal:** <https://checker.ofcom.org.uk/en-gb/mobile-coverage>



Score	Energy rating	Current	Potential
92+	A		
81-91	B		
69-80	C	72 C	77 C
55-68	D		
39-54	E		
21-38	F		
1-20	G		



For more information, scan the QR code or visit the link below



<https://www.winkworth.co.uk/sale/property/NHS250095>

Where no figures are shown, we have been unable to ascertain the information. All figures that are shown were correct at the time of printing.

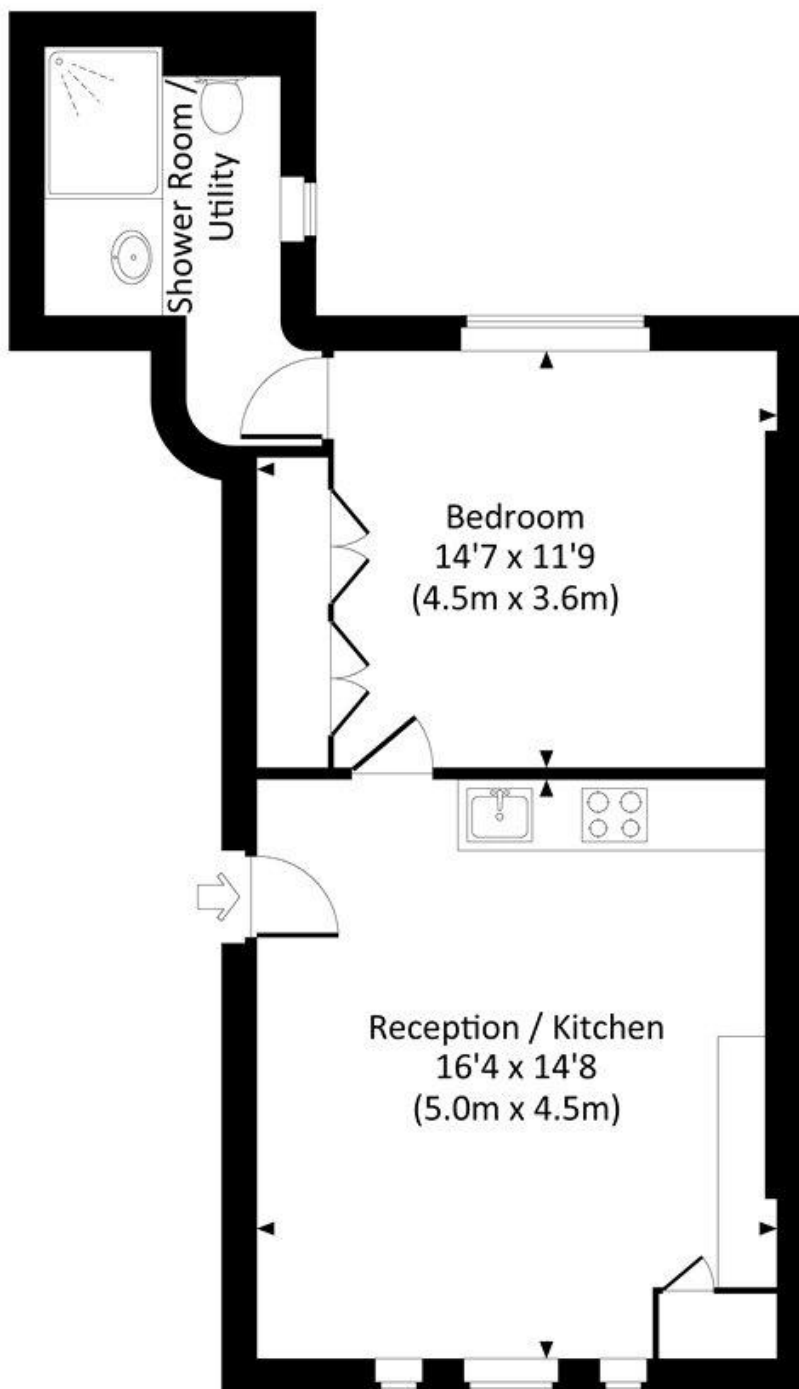




## KENSINGTON PARK ROAD, W11

Approx. gross internal area

542 Sq Ft. / 50.4 Sq M.



### GROUND FLOOR

All measurements are approximate and for guidance and illustrative purposes only.  
Photography and Floor Plans by [www.rayco.london](http://www.rayco.london) - +44 7793 974 209

**Notting Hill Sales**

0207 727 3227 | [nottinghill@winkworth.co.uk](mailto:nottinghill@winkworth.co.uk)

**Winkworth**

for every step...

Winkworth wishes to inform prospective buyers and tenants that these particulars are a guide and act as information only. All our details are given in good faith and believed to be correct at the time of printing but they don't form part of an offer or contract. No Winkworth employee has authority to make or give any representation or warranty in relation to this property. All fixtures and fittings, whether fitted or not are deemed removable by the vendor unless stated otherwise and room sizes are measured between internal wall surfaces, including furnishings.