



WOODLAND CLOSE, KINGSBURY, NW9
£800,000 FREEHOLD

CHARMING THREE BEDROOM SEMI-DETACHED HOUSE WITH LARGE REAR GARDEN

Kingsbury | 020 8204 0000 | kingsbury@winkworth.co.uk

Winkworth

winkworth.co.uk

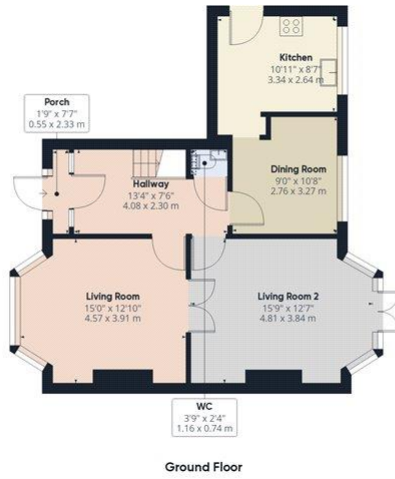
See things differently



DESCRIPTION: Welcome to this charming THREE-BEDROOM, SEMI-DETACHED residence. As you enter, you're greeted by a spacious and inviting reception room, bathed in natural light from carefully placed windows. This room serves as the heart of the home, providing an ideal space for relaxation and entertaining. Adjacent to the reception room is a generous dining area, creating a seamless transition from living to dining. Through the dining area, you will find a well-appointed kitchen fully equipped with modern appliances and ample counter space. The ground floor also benefits from a practical WC. Moving upstairs, you'll discover THREE SPACIOUS BEDROOMS, with large windows in each bedroom that allow for plenty of natural light, creating a bright and airy atmosphere. In addition to the first floor, you have a family bathroom with a separate WC. Further benefits include a beautifully LANDSCAPED GARDEN, OFF-STREET PARKING, and a GARAGE. Ideally located close to local amenities, reputable schools, and vast transport links. Don't miss out on this wonderful opportunity to make this house your new home. Contact us now to arrange a viewing.







Ground Floor



Floor 1

Approximate total area¹⁶
 1252.05 ft²
 116.32 m²

Reduced headroom
 1.01 ft²
 0.09 m²

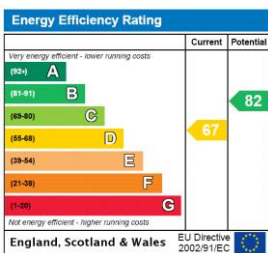
Excluding balconies and terraces

Reduced headroom (below 1.5m/4.92ft)

While every attempt has been made to ensure accuracy, all measurements are approximate, not to scale. This floor plan is for illustrative purposes only.

GIRAFFE 360

This floorplan is for illustration purposes only and is not to scale. The position and size of doors, windows, appliances and other features are approximate.



Kingsbury | 020 8204 0000 | kingsbury@winkworth.co.uk