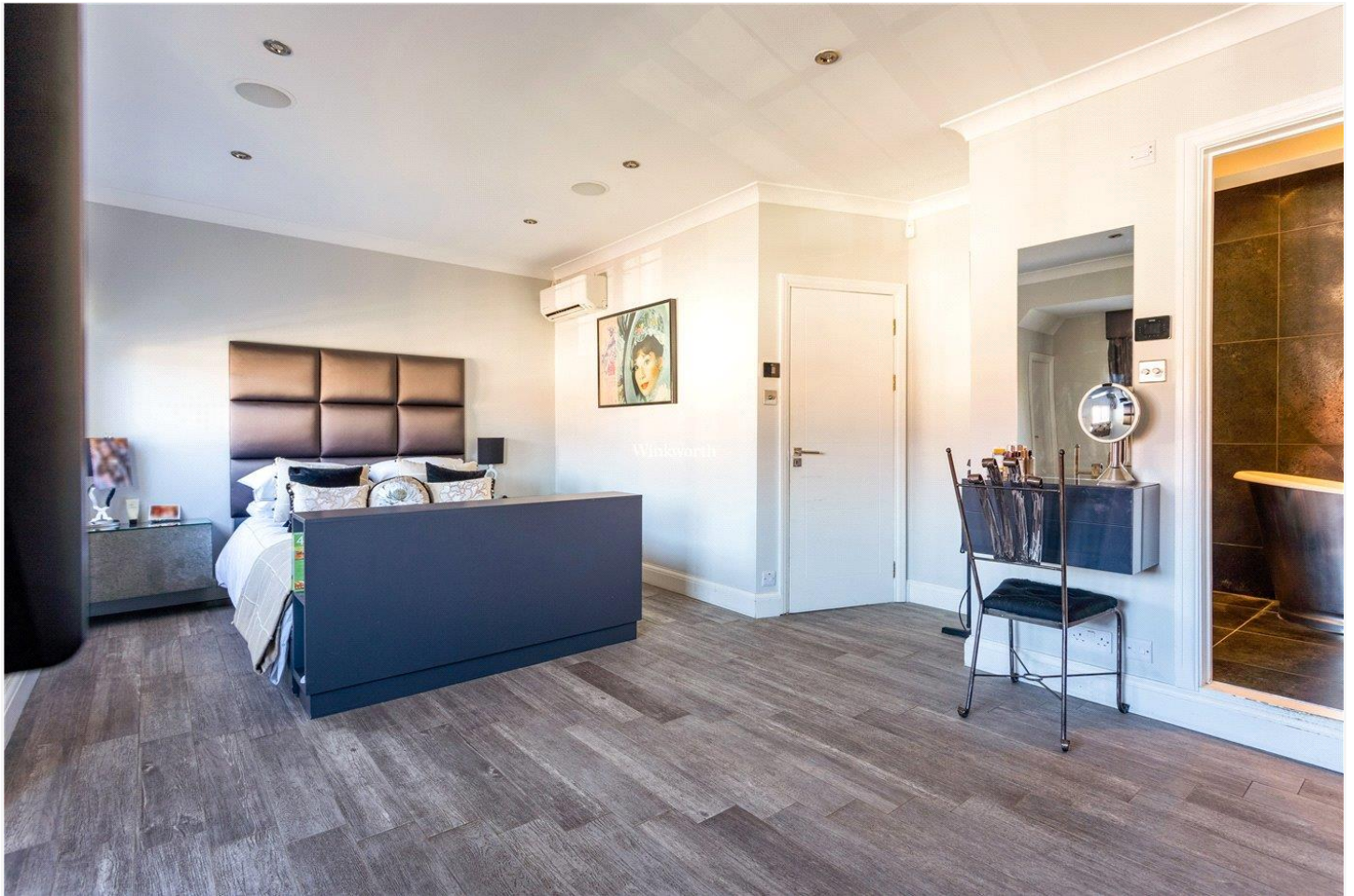




ASHBOURNE AVENUE, NW11
£1,395,000 FREEHOLD

A stunning 5 bedroom 3 bathroom family house in the heart of temple fortune

5 Bedrooms/ 3 Bathrooms/ Guest WC/ Large Eat in kitchen/ Family room with pesach kitchen & sukkah roof/ Off Street Parking/ Southerly facing garden with artificial grass/ external insulation to front rendered walls/ EPC Rating: D



DESCRIPTION:

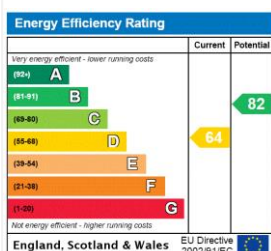
Located in the heart of Temple Fortune within easy access of all local shops, restaurants and transport facilities, we are delighted to offer this interior designed 5 bedroom 3 bathroom family home.

With accommodation over 3 floors, the house is in excess of 2200 sq. ft. with well proportioned living space, a contemporary bright and spacious kitchen and family area and generous bedrooms suitable for a large family. The ground floor area has a combination of wooden flooring and porcelain tiles with underfloor heating and is a large open space, ideal for entertaining complete with an inset tropical fish tank between the hallway and the living room. The kitchen area has been designed to accommodate a fully kosher kitchen along with a separate Passover section and a sliding sukkah roof at the eating area which overlooks the secluded rear garden which is an easy maintenance artificial grassed area complete with 2 sheds.

On the 1st floor the principal suite (it was previously 2 bedrooms) is very spacious and encompasses a full en suite bathroom and dressing area plus there are 2 further bedrooms and a family bathroom. The second floor with a full rear dormer has 2 further double bedrooms (1 with an en suite shower room) and an additional WC.

To the rear, the garden, along with artificial grass is a large patio area and 2 sheds one of which has light and power.

Overall, this is a truly delightful family home that offers luxury fittings and a modern contemporary design. We anticipate a high level of demand and viewing is strongly recommended.

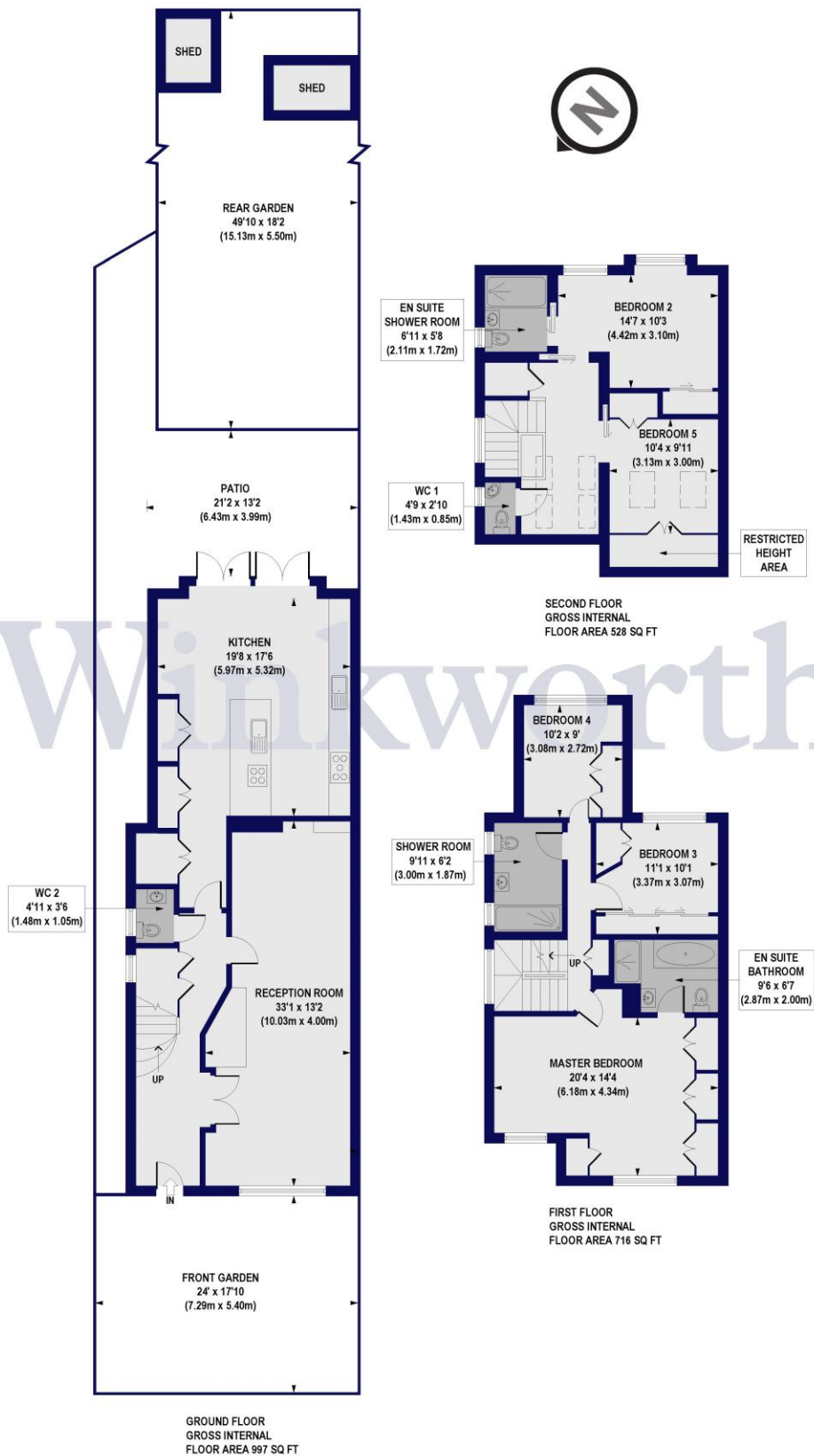




Ashbourne Avenue, NW11

Approx. Gross Internal Floor Area 2241 sq. ft / 208.16 sq. m (Including Restricted Height Area)

Approx. Gross Internal Floor Area 2211 sq. ft / 205.37 sq. m (Excluding Restricted Height Area)



All measurements of walls, doors, windows, fittings and appliances, including their size and location, are shown as standard sizes and do not constitute any warranty or representation by the seller, their agent or CP Creative. Any intending purchaser must satisfy himself by inspection or otherwise as to the correctness of the information contained in these plans.