



GROVELANDS PARK, WOKINGHAM, BERKSHIRE, RG41
£150,000 LEASEHOLD

Winkworth



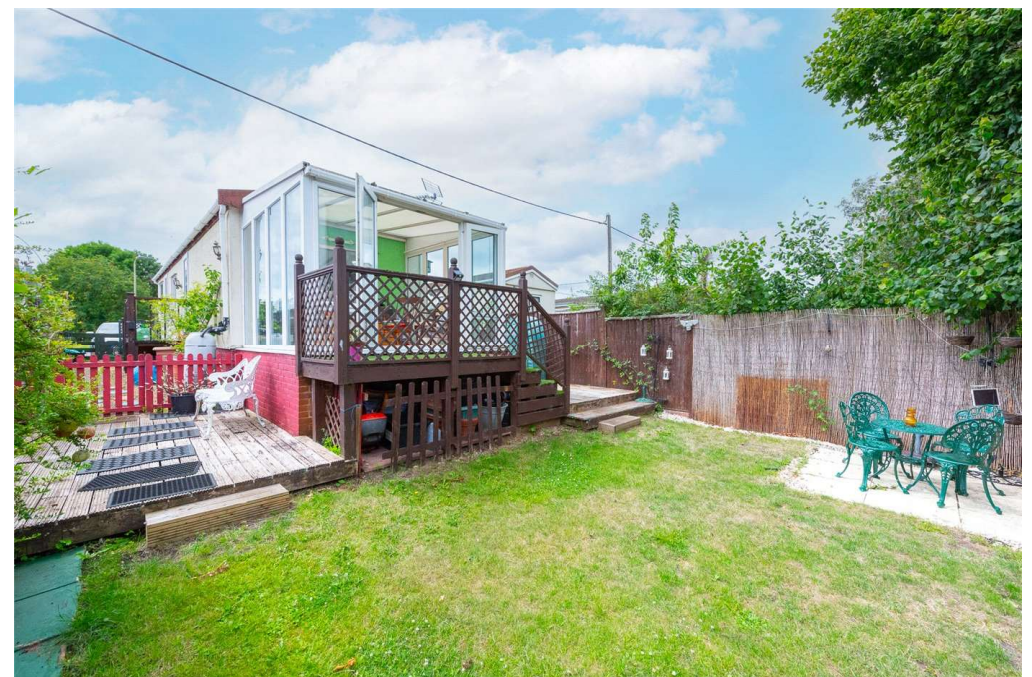
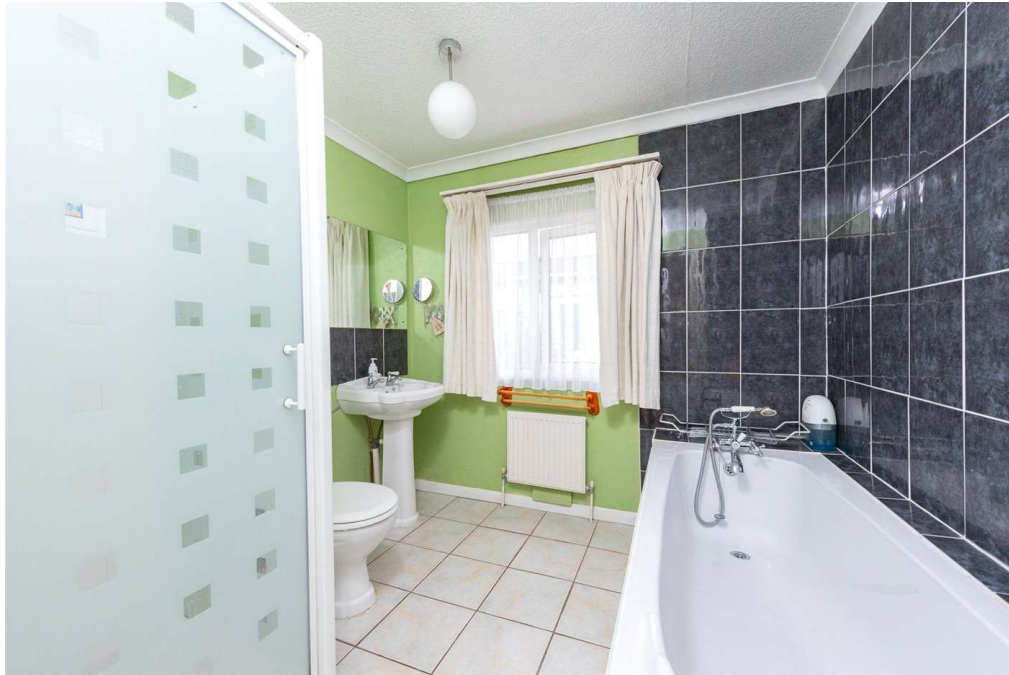
GROVELANDS PARK, WOKINGHAM, BERKSHIRE, RG41

Offered to the market with **NO ONWARD CHAIN** is this spacious one bedroom park home conveniently located on the pet friendly Grovelands Park in Winnersh, giving easy access to Reading and Wokingham.

This home benefits from a fantastic sized double bedroom, good sized 4 piece bathroom, kitchen, living room, small garden, off road parking and gas central heating. Please note there is a charge of approximately £198 mth for ground rent but it does include water bills.

Local amenities including a Sainsbury superstore and mainline railway station are all close by.

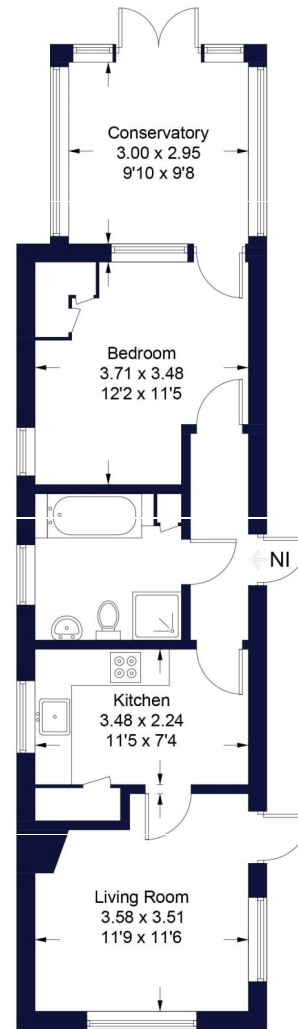






Grovelands Park

Approximate Gross Internal Area Total = 53.6 sq m / 577 sq ft



Ground Floor

Illustration for identification purposes only, measurements are approximate, not to scale. FloorplansUsketch.com © 2023 (ID987962)

Wokingham | |

winkworth.co.uk

Winkworth wishes to inform prospective buyers and tenants that these particulars are a guide and act as information only. All our details are given in good faith and believed to be correct at the time of printing but they don't form part of an offer or contract. No Winkworth employee has authority to make or give any representation or warranty in relation to this property. All fixtures and fittings, whether fitted or not are deemed removable by the vendor unless stated otherwise and room sizes are measured between internal wall surfaces, including furnishings.

