



Winchester Road Basingstoke RG21 8YP

Winkworth



Winchester Road

Basingstoke RG21 8YP

Accommodation

Hallway
Downstairs toilet
Living room
Dining room
Family room
Kitchen
Three bedrooms
Bathroom
Garage
Gardens

Description

This older style three bedroom semi-detached house has been extended to the rear and provides plenty of room for a family home. There is a large south-east facing garden to the rear with a garage and parking at the end.

The location is good, with schools and shops close by and a bus route along Winchester Road.

The house has a covered porch with the front door leading into the hallway.

Off to the right is the living room, which has a deep bay window and a feature fireplace. There is open access into the dining room, which has a log burner and french doors into the family room. This has a vaulted ceiling with velux windows and a further set of french doors giving plenty of natural light and framing a view down the length of the rear garden.

The kitchen extends into the family room and has been fitted with white storage and display cupboards complemented by granite effect worksurfaces. It has a gas hob with a built-in oven and a double bowl sink unit.

Completing the ground floor is the downstairs loo tucked under the stairs.

Heading upstairs, there are three bedrooms – two doubles and a good size single. Bedroom one has a bay window and a fitted wardrobe (not shown on the floorplan).

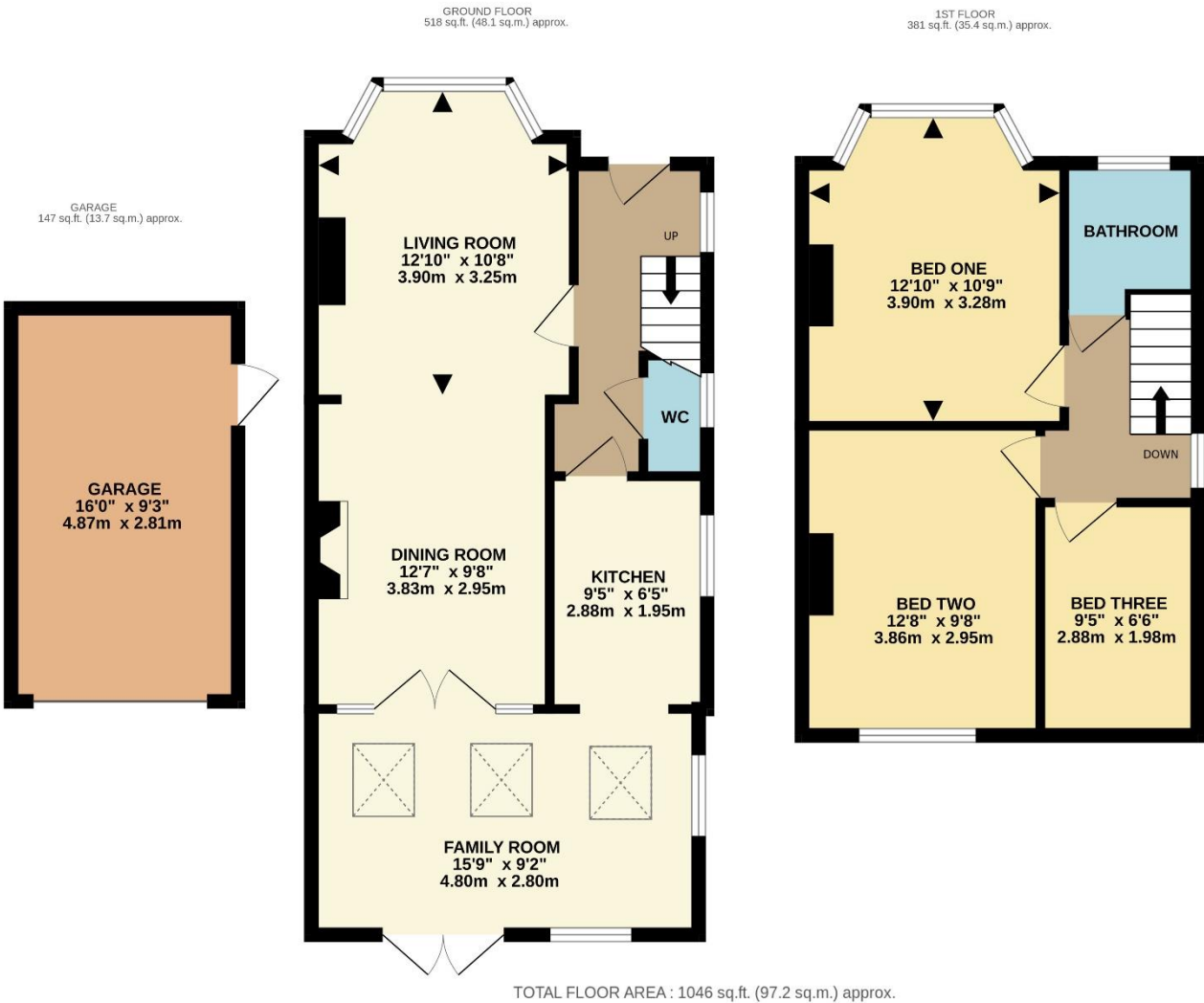
The bathroom has a white suite with an electric shower and screen over the bath.

Externally, there is a block paved area to the front of the house and a side gate giving access to the rear garden. This extends to about 60 feet (17.5 metres) and has a long lawn with two sheds and a paved terrace. At the end is a prefabricated style garage with hardstanding parking for two small/medium size cars.



Winchester Road
Basingstoke RG21 8YP

Score	Energy rating	Current	Potential
92+	A		
81-91	B		81 B
69-80	C		
55-68	D	67 D	
39-54	E		
21-38	F		
1-20	G		



Whilst every attempt has been made to ensure the accuracy of the floorplan contained here, measurements of doors, windows, rooms and any other items are approximate and no responsibility is taken for any error, omission or mis-statement. This plan is for illustrative purposes only and should be used as such by any prospective purchaser. The services, systems and appliances shown have not been tested and no guarantee as to their operability or efficiency can be given.
Made with Metropix ©2026