



Astonville Street, SW18

£1,200,000 *Freehold*

4  1  2 

KEY FEATURES

- Prime Southfields Grid location
- Four bedrooms, two bathrooms
- Scope to extend and renovate
- Arranged over three floors (1,442 sq. ft.)
- 0.5 miles from Southfields station



Southfields

020 8877 1000 | southfields@winkworth.co.uk

Winkworth

for every step...



DESCRIPTION

Positioned on one of Southfields most sought-after roads within “The Grid”, this beautifully presented four-bedroom family home offers the perfect blend of period charm and modern living, with generous accommodation arranged over three floors and a wonderful rear garden.

The ground floor features a bright double reception room with a bay window and high ceilings, leading seamlessly into a stylish kitchen. To the rear, a conservatory offers an excellent dining or family space, with the potential to extend (subject to planning permission), and opens directly onto the garden.

On the first floor there are two generous double bedrooms served by a family bathroom. The top floor boasts a superb principal bedroom with ample storage and its own shower room, along with a further single bedroom and handy eaves storage.

Measuring approximately 1,442 sq. ft. (including storage), this home already offers excellent space for family living, while still providing room to extend further (STPP).

LOCATION

Astonville Street sits in the ever-popular Southfields Grid, moments away from Southfields Underground (District Line), and the green open spaces of Wimbledon Park and Wandsworth Common. Families are also drawn here for the excellent local schools, and the village feel created by the independent shops, cafés, and restaurants nearby.

MATERIAL INFO

Tenure: Freehold

Council Tax Band: E

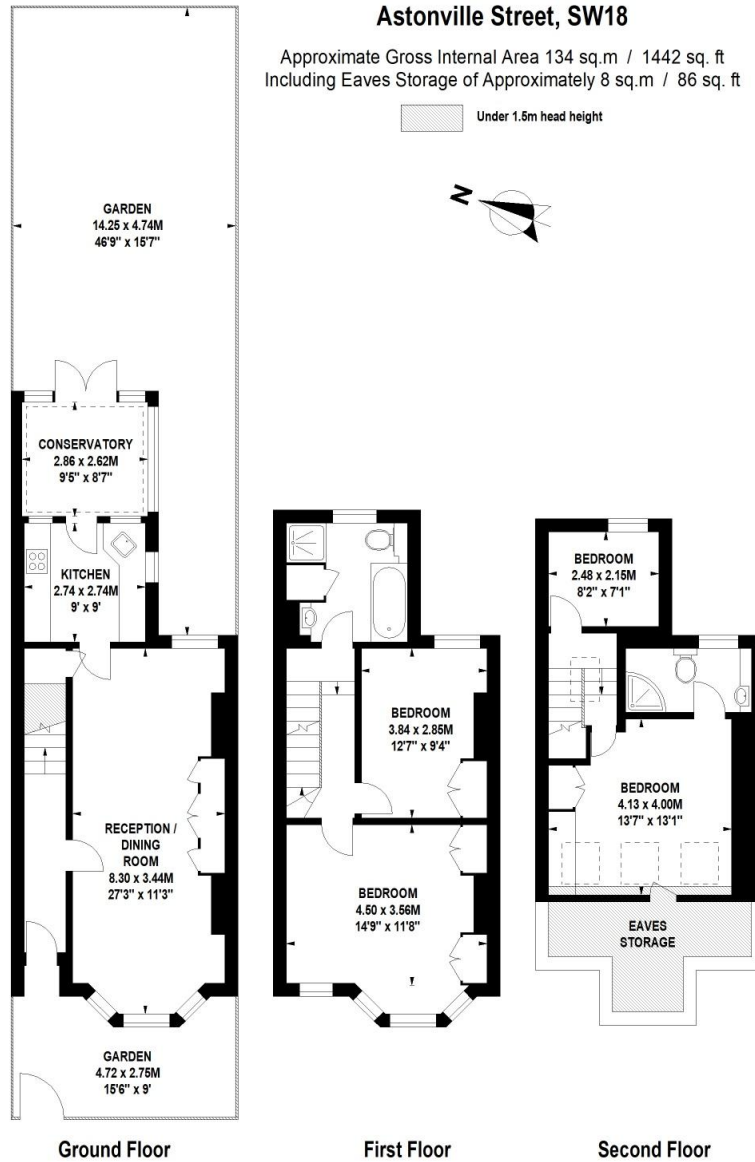
EPC rating: D



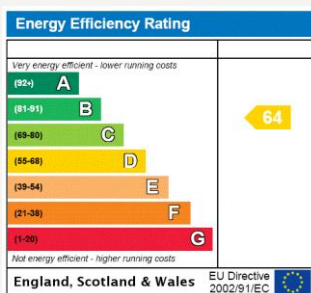
Astonville Street, SW18

Approximate Gross Internal Area 134 sq.m / 1442 sq. ft
Including Eaves Storage of Approximately 8 sq.m / 86 sq. ft

 Under 1.5m head height



Floor Plan produced for WINKWORTH by Mays Floorplans © . Tel 020 3397 4594
Illustration for identification purposes only, not to scale
All measurements are maximum, and include wardrobes and window bays where applicable



Where no figures are shown, we have been unable to ascertain the information. All figures that are shown were correct at the time of printing.

Southfields

020 8877 1000 | southfields@winkworth.co.uk

Winkworth

for every step...

Winkworth wishes to inform prospective buyers and tenants that these particulars are a guide and act as information only. All our details are given in good faith and believed to be correct at the time of printing but they don't form part of an offer or contract. No Winkworth employee has authority to make or give any representation or warranty in relation to this property. All fixtures and fittings, whether fitted or not are deemed removable by the vendor unless stated otherwise and room sizes are measured between internal wall surfaces, including furnishings.