



FLAT 44, PURBECK GARDENS, LONDON, SE26
£425,000 TO BE ADVISED

FABULOUS TWO BEDROOM APARTMENT

Forest Hill | | foresthill@winkworth.co.uk

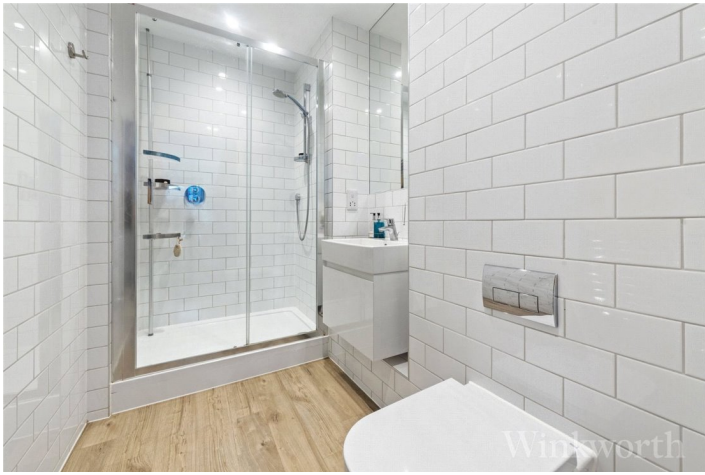


DESCRIPTION:

****Guide Price £425,000 - £450,000****

Winkworth are delighted to offer to the market this stunning one bedroom 6th floor modern apartment, built in 2018.

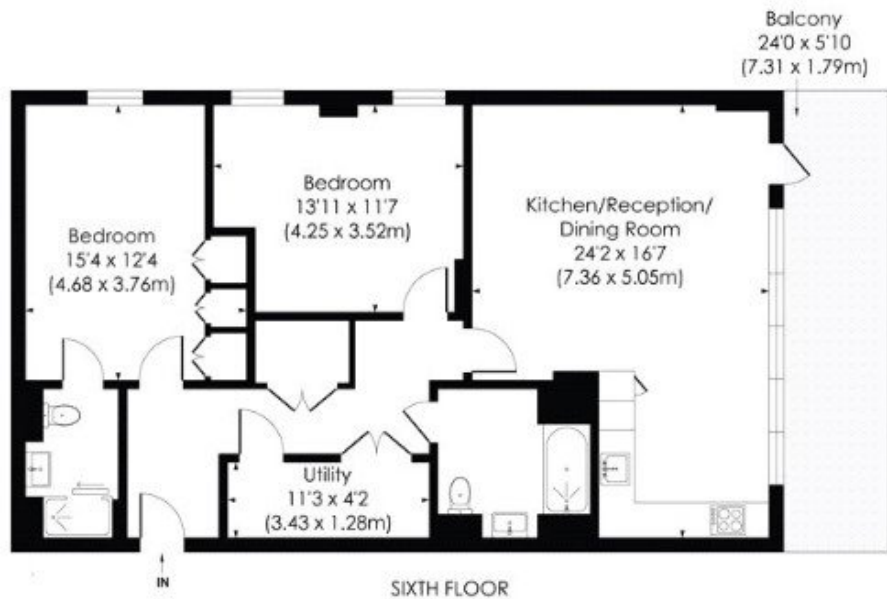




PURBECK GARDENS, SE26

Approx. Gross Internal Floor Area

1005 Sq. ft/93.36 Sq. m



© Pixangle Property Marketing Ltd, info@pixangle.com Tel: 0208 870 2118

pixangle
PROPERTY MARKETING

This floor plan has been prepared for the purpose of illustration only in accordance with the latest RICS code of measuring practice and is not to scale. All measurements and areas are approximate and whilst every effort has been made to ensure the accuracy of the plan contained here, no responsibility is taken for any error, omission or misstatement.

This floorplan is for illustration purposes only and is not to scale. The position and size of doors, windows, appliances and other features are approximate.

Score	Energy rating	Current	Potential
92+	A		
81-91	B	86 B	86 B
69-80	C		
55-68	D		
39-54	E		
21-38	F		
1-20	G		

Tenure: To be advised

Term: 0 year and 0 months

Service Charge: £2200 per annum

Ground Rent: £ 400 Annually (subject to increase)

Council Tax Band:

Where no figures are shown, we have been unable to ascertain the information. All figures that are shown were correct at the time of printing.