



FLAT 44, PURBECK GARDENS, LONDON, SE26
£450,000 LEASEHOLD

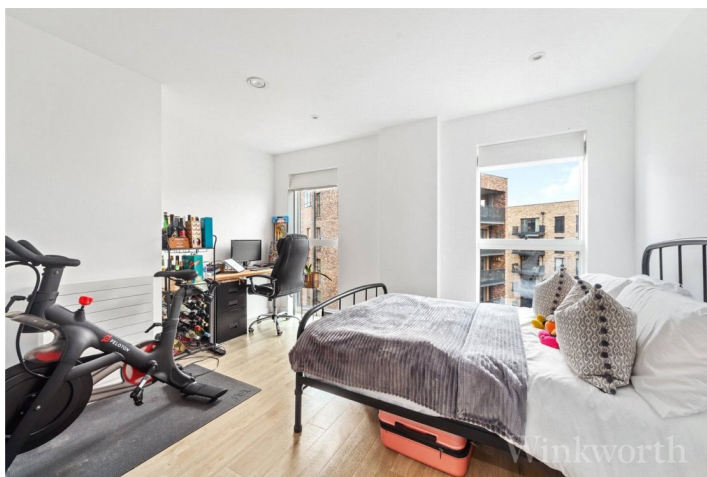
FABULOUS TWO BEDROOM APARTMENT

Forest Hill | | foresthill@winkworth.co.uk



DESCRIPTION:

Two Genuine Double Bedrooms | Large reception room | Fully fitted kitchen with modern appliances | Two Bathrooms | Fantastic Location

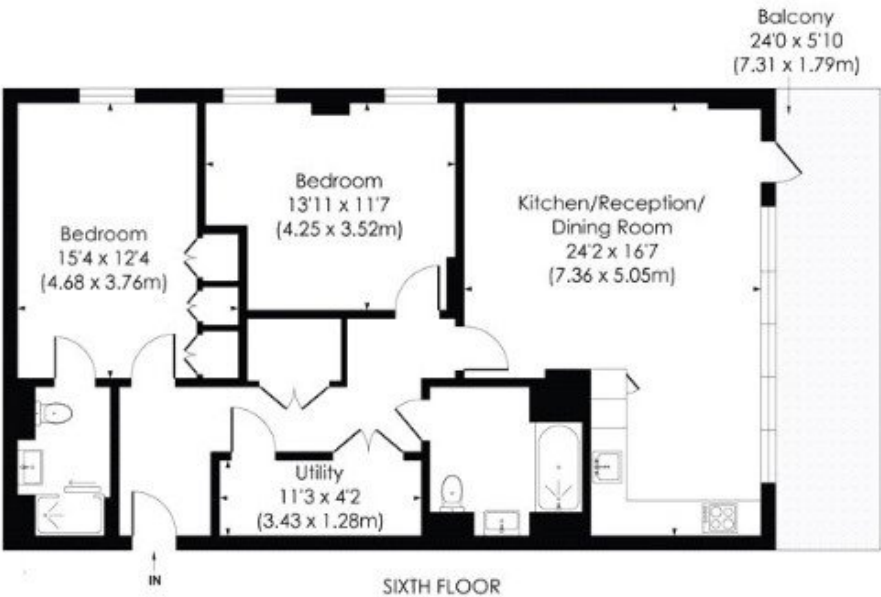




PURBECK GARDENS, SE26

Approx. Gross Internal Floor Area

1005 Sq. ft/93.36 Sq. m



© Pixangle Property Marketing Ltd, info@pixangle.com Tel: 0208 870 2118

pixangle
PROPERTY MARKETING

This floor plan has been prepared for the purpose of illustration only in accordance with the latest RICS code of measuring practice and is not to scale. All measurements and areas are approximate and whilst every effort has been made to ensure the accuracy of the plan contained here, no responsibility is taken for any error, omission or misstatement.

This floorplan is for illustration purposes only and is not to scale. The position and size of doors, windows, appliances and other features are approximate.

Score	Energy rating	Current	Potential
92+	A		
81-91	B	86 B	86 B
69-80	C		
55-68	D		
39-54	E		
21-38	F		
1-20	G		

Tenure: To be advised