



Courtfield Road, South Kensington, London, SW7

£435 per week* / £1,885 per month – Furnished

A well-proportioned one double bedroom flat located on the ground floor of this period building with private street entrance.

1 Bedroom | 1 Reception Room | 1 Bathroom | Ground Floor Flat | Period | 449 Approx sq ft | EPC: D

APPLICANT FEES MAY BE APPLICABLE
HOLDING DEPOSIT OF 1 WEEK'S RENT
SECURITY DEPOSIT OF 5 WEEKS' RENT

Winkworth

winkworth.co.uk

for every step...



DESCRIPTION

A well-proportioned one double bedroom flat located on the ground floor of this period building with private street entrance. The property benefits from a good-sized reception room, a separate kitchen, gas central heating, a combination washer/dryer, a double bedroom with built-in storage and a separate bathroom with shower over bath. The flat is available from mid-October on a furnished basis.

ACCOMMODATION

1 Bedroom, 1 Reception Room,
1 Bathroom, Ground Floor, Period,
Furnished, 449 Approx Sq ft

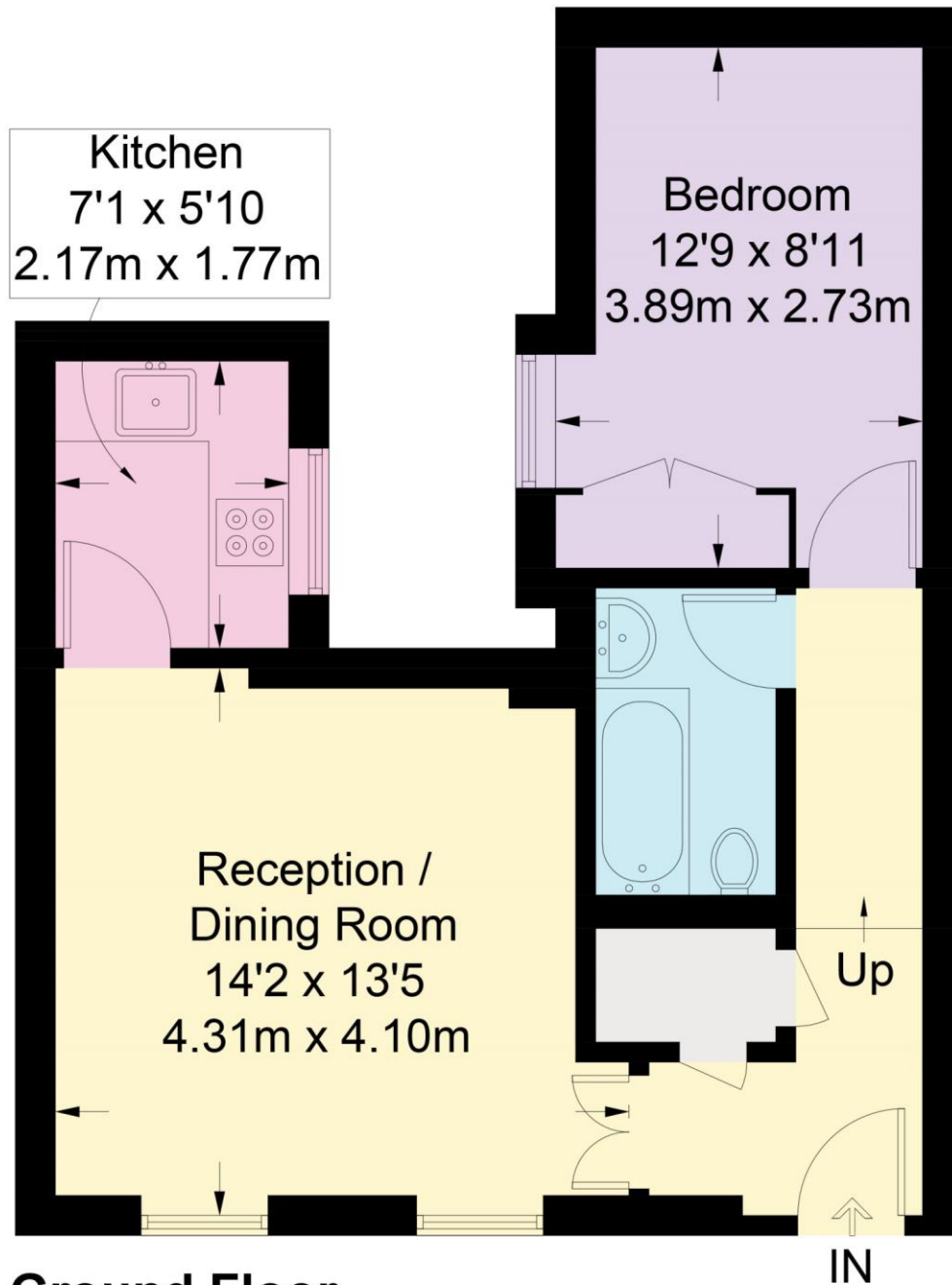
COUNCIL TAX BAND

Band F



Courtfield Road

Approximate Gross Internal Area = 449 sq ft / 41.7 sq m



Ground Floor

Not to scale, for guidance only and must not be relied upon as a statement of fact.
All measurements and areas are approximate only and have been prepared in accordance with the current edition of the RICS Code of Measuring Practice.

Energy Efficiency Rating		
	Current	Potential
Very energy efficient - lower running costs		
(92+) A		
(81-91) B		
(69-80) C		79
(55-68) D	65	
(39-54) E		
(21-38) F		
(1-20) G		
Not energy efficient - higher running costs		
England, Scotland & Wales	EU Directive 2002/91/EC	

Winkworth

*Please note, rent cannot be paid on a weekly basis

South Kensington Lettings | 020 7370 6767 | lettings.southken@winkworth.co.uk

winkworth.co.uk

for every step...

Winkworth wishes to inform prospective buyers and tenants that these particulars are a guide and act as information only. All our details are given in good faith and believed to be correct at the time of printing but they don't form part of an offer or contract. No Winkworth employee has authority to make or give any representation or warranty in relation to this property. All fixtures and fittings, whether fitted or not are deemed removable by the vendor unless stated otherwise and room sizes are measured between internal wall surfaces, including furnishings.