



37 WESTSTAND APARTMENTS, Highbury Stadium Square, London, N5
£2,100 PER MONTH UNFURNISHED

**A STUNNING ONE BEDROOM APARTMENT JUST
MOMENTS FROM ARSENAL UNDERGROUND STATION**

Hackney | 020 8986 4216 | hackney@winkworth.co.uk

Tenant Fees Apply: Details of fees for tenant referencing, tenancy agreement admin fees and renewal fees are available on the Winkworth website and the link can be found with the displayed rent for the property. Tenants should ensure they are fully conversant with these upfront fees and other costs that are involved at the outset of the tenancy before making an offer to rent and your local Winkworth office will provide written details upon request.

[winkworth.co.uk](https://www.winkworth.co.uk)

Winkworth

See things differently



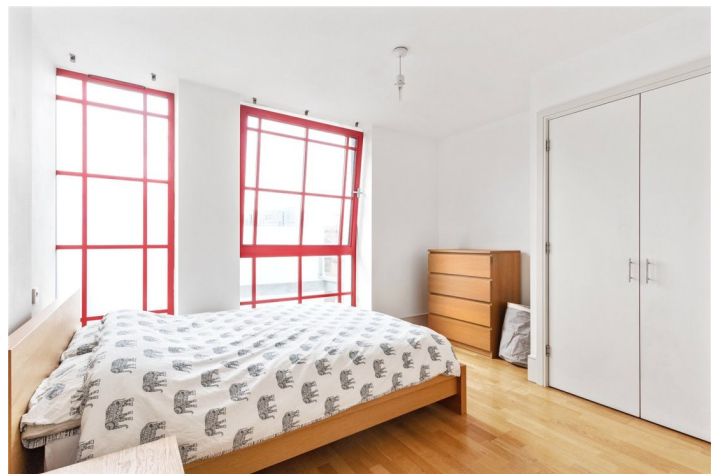
DESCRIPTION:

A superb one bedroom apartment set in Highbury Stadium Square which is the original home of Arsenal Football Club and retains the historic art deco facade. The apartment offers contemporary fittings throughout, with the open plan living room offering attractive wooden floors, the bedroom is carpeted and offers excellent storage in the form of fitted wardrobes.

The Stadium apartments benefit from a 24 hour concierge service, 7 days a week, and are located moments from Arsenal tube (0.1 miles) for the Piccadilly line and walking distance to Highbury & Islington station and to the shops, bars and restaurants of Islington's Upper Street.

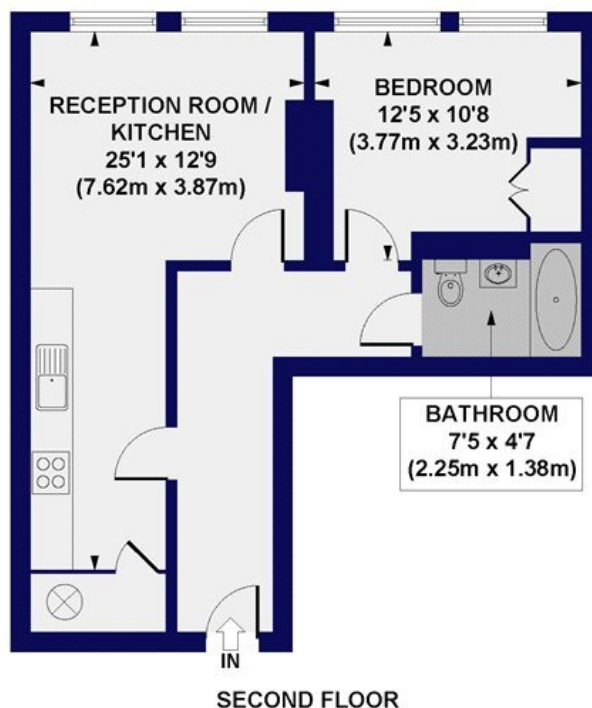
Holding deposit - 1 weeks rent.

Winkworth



Winkworth

Weststand Apartments, Highbury Stadium Square, N5
Approx. Gross Internal Floor Area 530 sq. ft / 49.20 sq. m



All measurements of walls, doors, windows, fittings and appliances, including their size and location, are shown as standard sizes and do not constitute any warranty or representation by the seller, their agent or CP Creative. Any intending purchaser must satisfy himself by inspection or otherwise as to the correctness of the information contained in these plans. This plan is for illustrative purposes only and should be used as such by any prospective purchasers.

Winkworth

This floorplan is for illustration purposes only and is not to scale. The position and size of doors, windows, appliances and other features are approximate.

Hackney | 020 8986 4216 | hackney@winkworth.co.uk

Winkworth

winkworth.co.uk

See things differently

Winkworth wishes to inform prospective buyers and tenants that these particulars are a guide and act as information only. All our details are given in good faith and believed to be correct at the time of printing but they don't form part of an offer or contract. No Winkworth employee has authority to make or give any representation or warranty in relation to this property. All fixtures and fittings, whether fitted or not are deemed removable by the vendor unless stated otherwise and room sizes are measured between internal wall surfaces, including furnishings.