



HILLRISE MANSIONS, WARLTERSVILLE ROAD, LONDON, N19
£345,000 LEASEHOLD

Fitted Kitchen / Breakfast Room * Fourth Floor with Lift Access * Double Bedroom 14'9 x 10'10

Close to Crouch Hill Overground * Reception Room with Balcony * 561 Sq Ft

Superb Views Over Central London

Crouch End | 020 8342 9999 | crouchend@winkworth.co.uk

Winkworth

winkworth.co.uk

See things differently



DESCRIPTION:

As the owners sole agent Winkworth have pleasure in offering for sale this extremely well maintained one bedroom fourth floor (with lift access) purpose built flat. Conveniently situated within a quarter of a mile from Crouch Hill over-ground station and the vast array of shops, cafes and restaurants on Crouch End Broadway this spacious flat boasts superb views over central London. Features include a reception room 13'8 x 11'7 with balcony, fully fitted kitchen / breakfast room 11'10 x 9'1, modern white bathroom suite and a double bedroom 14'9 x 10'10 with fitted wardrobes.

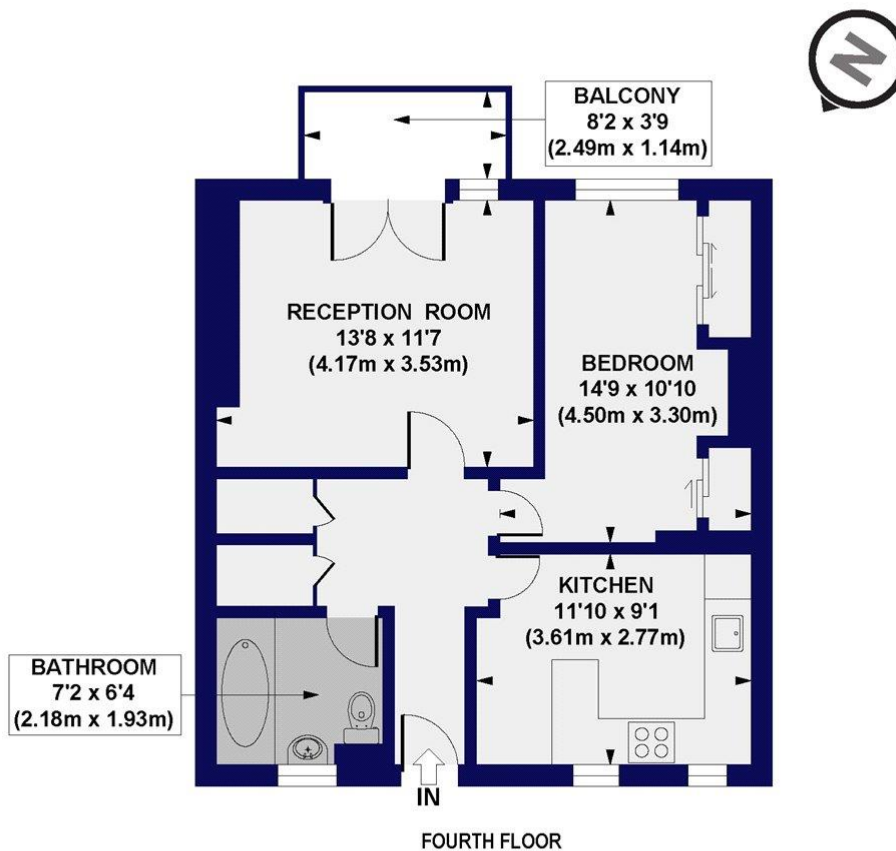


Winkworth



Winkworth

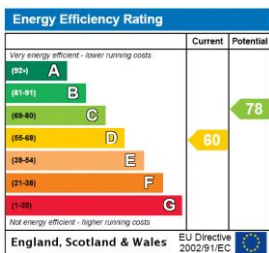
Hillrise Mansions, N19
 Approx. Gross Internal Floor Area 561 sq. ft / 52.12 sq. m



All measurements of walls, doors, windows, fittings and appliances, including their size and location, are shown as standard sizes and do not constitute any warranty or representation by the seller, their agent or CP Creative. Any intending purchaser must satisfy himself by inspection or otherwise as to the correctness of the information contained in these plans. This plan is for illustrative purposes only and should be used as such by any prospective purchasers.

Winkworth

This floorplan is for illustration purposes only and is not to scale. The position and size of doors, windows, appliances and other features are approximate.



Crouch End | 020 8342 9999 | crouchend@winkworth.co.uk



winkworth.co.uk

See things differently

Winkworth wishes to inform prospective buyers and tenants that these particulars are a guide and act as information only. All our details are given in good faith and believed to be correct at the time of printing but they don't form part of an offer or contract. No Winkworth employee has authority to make or give any representation or warranty in relation to this property. All fixtures and fittings, whether fitted or not are deemed removable by the vendor unless stated otherwise and room sizes are measured between internal wall surfaces, including furnishings.