



**NORTH CROSS ROAD, EAST DULWICH, SE22**  
**£500,000 LEASEHOLD**

**A BEAUTIFULLY PRESENTED FIRST-FLOOR  
TWO DOUBLE-BEDROOM FLAT IS SITUATED  
WITHIN A CHARMING VICTORIAN BUILDING.**

Dulwich | 020 8299 2722 | [dulwich@winkworth.co.uk](mailto:dulwich@winkworth.co.uk)

**Winkworth**

*winkworth.co.uk*

See things differently



## DESCRIPTION:

A beautifully presented first floor two double bedroom flat is situated within this charming Victorian building on North Cross Road. Newly renovated both bedrooms have built-in wardrobes. Excellent storage kitchen has induction hob, double oven, washing machine, separate fridge, separate freezer, dishwasher, lots of cupboard storage space. It is perfectly positioned to benefit from easy access to the bars, restaurants and cinema on Lordship Lane and easy access to transport links including East Dulwich and Peckham Rye should the East London tube connections be required. This is a fantastic flat in a superb location and early viewing is recommended.

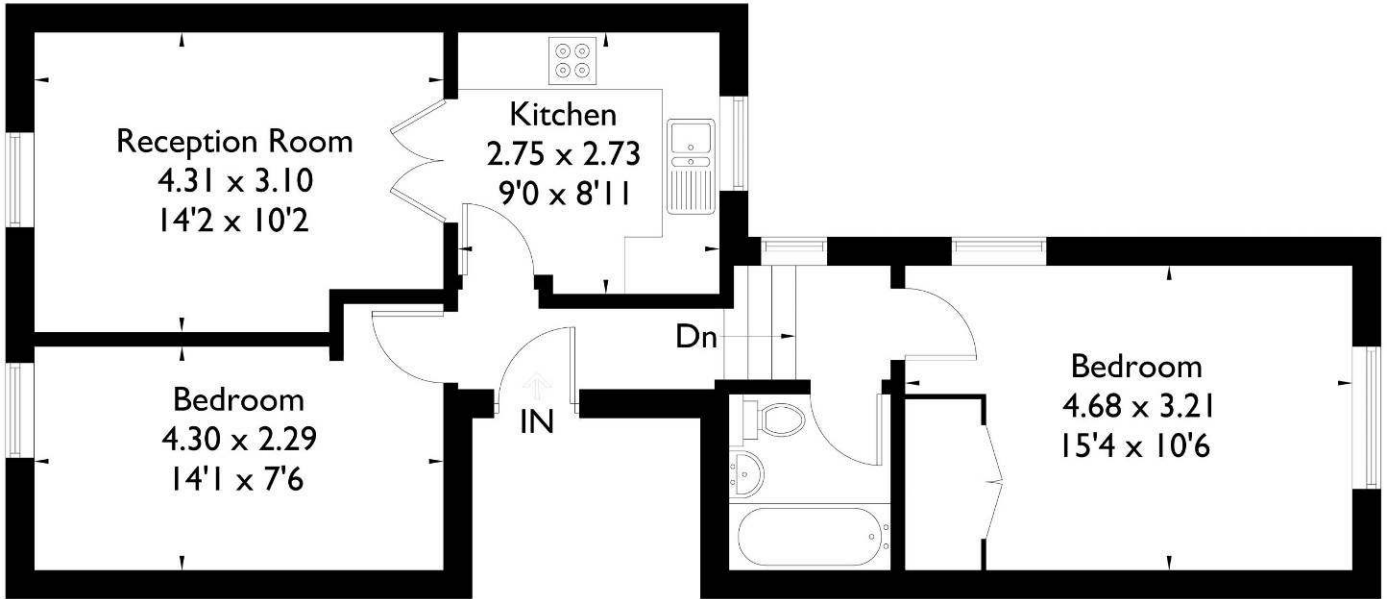
## AT A GLANCE

- Two Double Bedrooms
- Period Conversion
- Reception Room
- Modern Kitchen & Bathroom
- Leasehold
- Chain Free



# North Cross Road, East Dulwich, SE22

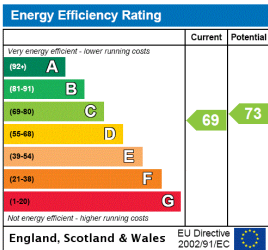
Approximate Gross Internal Area = 56.4 sq m / 607 sq ft



FLOORPLANZ © 2016 0845 6344080 Ref: 166528

This plan is for layout guidance only. Drawn in accordance with RICS guidelines. Not drawn to scale unless stated. Windows & door openings are approximate. Whilst every care is taken in the preparation of this plan, please check all dimensions, shapes & compass bearings before making any decisions reliant upon them.

This floorplan is for illustration purposes only and is not to scale. The position and size of doors, windows, appliances and other features are approximate.



Dulwich | 020 8299 2722 | dulwich@winkworth.co.uk



winkworth.co.uk

See things differently

Winkworth wishes to inform prospective buyers and tenants that these particulars are a guide and act as information only. All our details are given in good faith and believed to be correct at the time of printing but they don't form part of an offer or contract. No Winkworth employee has authority to make or give any representation or warranty in relation to this property. All fixtures and fittings, whether fitted or not are deemed removable by the vendor unless stated otherwise and room sizes are measured between internal wall surfaces, including furnishings.