



TYSOE STREET, LONDON, EC1R
£925,000 SHARE OF FREEHOLD

A VERY ATTRACTIVE LIGHT-FILLED TWO BEDROOM FLAT ON THE TOP TWO FLOORS OF A BEAUTIFUL GEORGIAN CONVERSION. OFFERED WITH A SHARE OF THE FREEHOLD AND NO CHAIN.

Clerkenwell | 020 7405 1288 | clerkenwell@winkworth.co.uk

Winkworth

for every step...

winkworth.co.uk



DESCRIPTION:

With impressive floor to ceiling sash windows, the south facing generous reception room is very light and bright, offering a pleasant open outlook. There is also a spacious, high ceilinged eat-in kitchen as well as two very good-sized double bedrooms, separate bathroom, and downstairs W/C. Tysoe Street is located just between Wilmington Square and Rosebery Avenue. It is ideally located with Exmouth Market and Amwell Village right on your doorstep. Farringdon Station, Kings Cross and Angel are all close by. Equally, it is within easy walking distance of both the City and The West End.



Winkworth

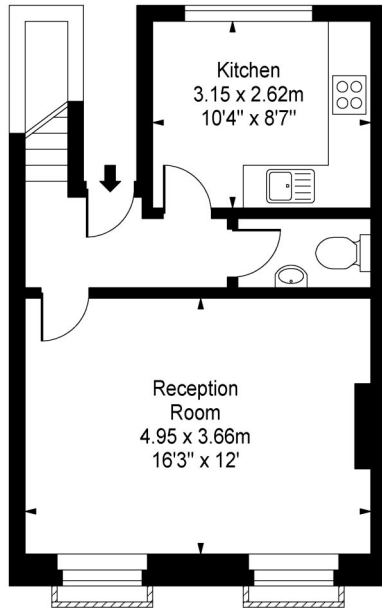
for every step...



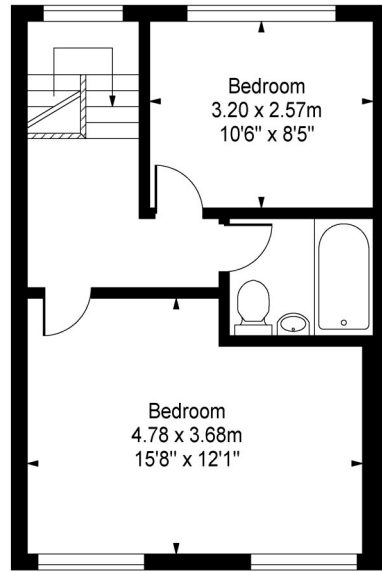
Winkworth

for every step...

Tysoe Street, EC1



First Floor



Second Floor

Approx Gross Internal Area 760 Sq Ft - 70.60 Sq M

This floor plan should be used as a general outline for guidance only and does not constitute in whole or in part an offer or contract. Any intending purchaser or lessee should satisfy themselves by inspection, searches, enquiries and full survey as to the correctness of each statement. Any areas, measurements or distances quoted are approximate and should not be used to value a property or be the basis of any sale or let.

This floorplan is for illustration purposes only and is not to scale. The position and size of doors, windows, appliances and other features are approximate.

Clerkenwell | 020 7405 1288 | clerkenwell@winkworth.co.uk

Winkworth

for every step...

winkworth.co.uk

Winkworth wishes to inform prospective buyers and tenants that these particulars are a guide and act as information only. All our details are given in good faith and believed to be correct at the time of printing but they don't form part of an offer or contract. No Winkworth employee has authority to make or give any representation or warranty in relation to this property. All fixtures and fittings, whether fitted or not are deemed removable by the vendor unless stated otherwise and room sizes are measured between internal wall surfaces, including furnishings.