



NEW KINGS ROAD, SW6 £850,000 LEASEHOLD

A beautifully presented two double bedroom, two bathroom, split level flat on New Kings Road, overlooking Parsons Green.

Fulham & Parsons Green | 020 7731 3388 | fulham@winkworth.co.uk

Winkworth

for every step...

winkworth.co.uk



DESCRIPTION:

The flat spans 852 sq. ft. on the corner position of a period building, over the ground and lower ground floors, and offers exceptional entertaining space. The ground floor comprises a beautifully renovated kitchen and a dining room, which is flooded by natural light from its dual aspect position, enjoying views across Parsons Green and Bradbourne Street. There is a guest cloakroom off the hallway which leads to an immaculate reception, benefitting from high ceilings and wonderful wooden flooring. A staircase just off the reception room leads to the bedrooms on the lower ground floor. The master bedroom has the advantage of generous built in wardrobes and an ensuite shower room. The second bedroom is also of generous proportions, with built in cupboards, and is served by a separate modern bathroom.

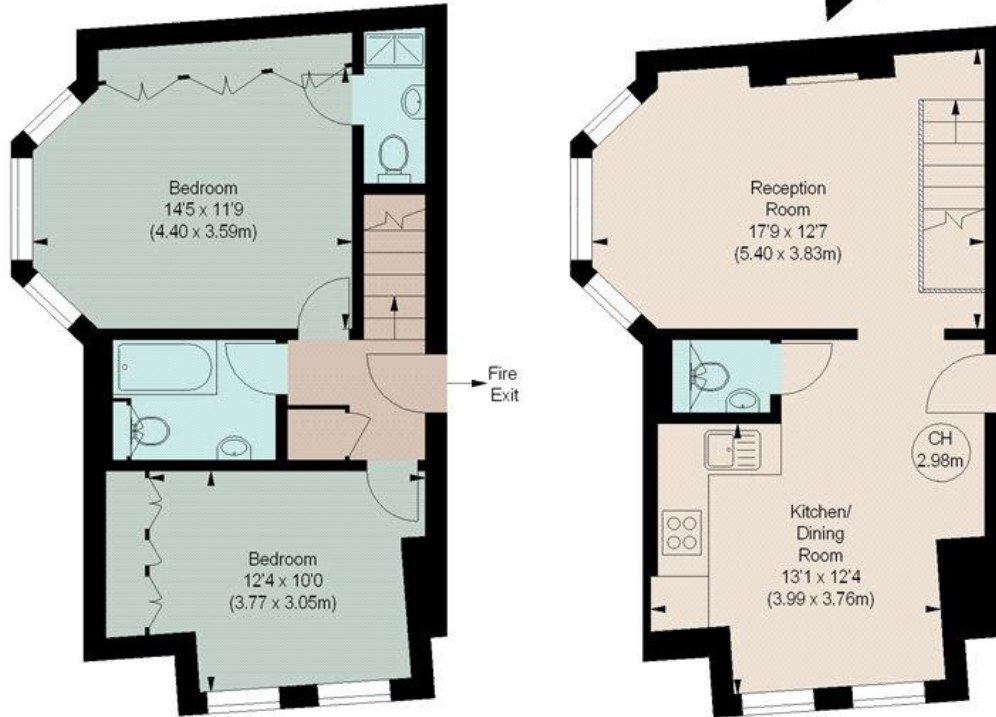
Perfectly positioned directly opposite the Green, the property is within the heart of the village style centre of Parsons Green. There are several shops, local restaurants, delis and local amenities within immediate proximity, as well as local supermarkets within a few minutes' walk. Parsons Green tube station is a short stroll away and the number 22 bus connect the property to Central and South London.



NEW KINGS ROAD, SW6

Approximate gross internal area
852 sq ft / 79.15 sq m

Key :
CH - Ceiling Height



LOWER GROUND FLOOR
(432 sq ft.)

GROUND FLOOR
(420 sq ft.)

The floor plan is not to scale and measurements and areas shown are approximate and therefore should be used for illustrative purposes only. The plan has been prepared in accordance with the RICS code of Measuring Practice and whilst we have confidence in the information produced, it must not be relied on. If there is any aspect of particular importance, you should carry out or commission your own inspection of the property.
Copyright of FeaturePRO.

This floorplan is for illustration purposes only and is not to scale. The position and size of doors, windows, appliances and other features are approximate.

Fulham & Parsons Green | 020 7731 3388 | fulham@winkworth.co.uk



for every step...

winkworth.co.uk

Winkworth wishes to inform prospective buyers and tenants that these particulars are a guide and act as information only. All our details are given in good faith and believed to be correct at the time of printing but they don't form part of an offer or contract. No Winkworth employee has authority to make or give any representation or warranty in relation to this property. All fixtures and fittings, whether fitted or not are deemed removable by the vendor unless stated otherwise and room sizes are measured between internal wall surfaces, including furnishings.