



## DENBIGH STREET, SW1V

£385,000

LEASEHOLD

### At a glance...

- Double Bedroom
- Reception
- Separate Kitchen
- Bathroom
- Central Location
- Council Tax Band: D

**Winkworth**

for every step...



Energy Efficiency Rating		
	Current	Potential
Very energy efficient - lower running costs		
(92+) <b>A</b>		
(81-91) <b>B</b>		
(69-80) <b>C</b>	76	79
(55-68) <b>D</b>		
(39-54) <b>E</b>		
(21-38) <b>F</b>		
(1-20) <b>G</b>		
Not energy efficient - higher running costs		
England, Scotland & Wales		EU Directive 2002/91/EC

## DENBIGH STREET, SW1V

£385,000

LEASEHOLD

A well presented one double bedroom second floor flat located in this handsome period building in the heart of Pimlico. The property is flooded with natural light throughout.

Accommodation comprises a bright and cosy reception room, double bedroom, modern fitted kitchen and family bathroom.

Denbigh Street is located in central Pimlico and offers superb accessibility to the local shops, cafes, bars and restaurants on Wilton Road, Churton Street and Warwick Way. The extensive selection of retail outlets on Victoria Street are within walking distance.

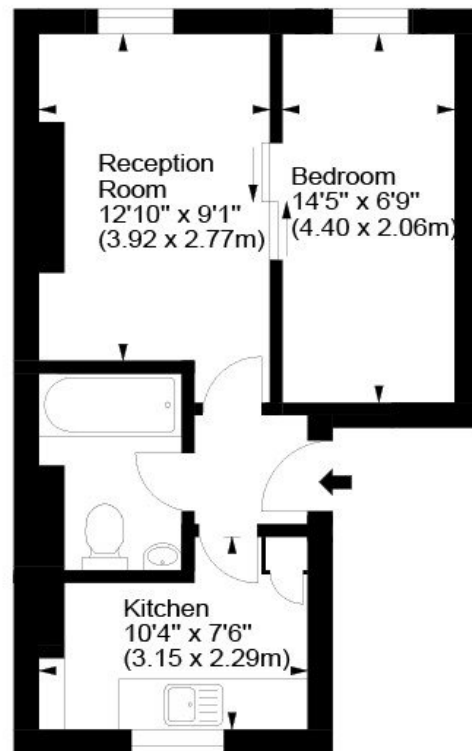
Nearest public transport can be found at Victoria's underground, mainline, bus and coach stations providing direct links to the City, Central London, Gatwick Airport and beyond.



Winkworth wishes to inform prospective buyers and tenants that these particulars are a guide and act as information only. All our details are given in good faith and believed to be correct at the time of printing but they don't form part of an offer or contract. No Winkworth employee has authority to make or give any representation or warranty in relation to this property. All fixtures and fittings, whether fitted or not are deemed removable by the vendor unless stated otherwise and room sizes are measured between internal wall surfaces, including furnishings.

### Denbigh Street, SW1

Approx. Gross Internal Area  
369 Sq Ft - 34.28 Sq M



Second Floor

For illustration purposes only. Not to scale.  
All measurements are taken and shown at floor level.  
www.r3photography.co.uk © Photography / Floor Plans / Lease Plans / EPCs



Pimlico & Westminster

020 7828 1786

pimlico@winkworth.co.uk

winkworth.co.uk/pimlico-westminster

**Winkworth**

for every step...