



SURREY ROAD, NUNGHEAD, LONDON SE15
£1,100,000 FREEHOLD

NESTLED IN THE HEART OF NUNHEAD, THIS BEAUTIFULLY PRESENTED THREE-BEDROOM HOUSE ON SURREY ROAD OFFERS AN EXCEPTIONAL BLEND OF MODERN LIVING AND PERIOD CHARM, ALL WITHIN ONE OF SOUTH LONDON'S MOST SOUGHT-AFTER RESIDENTIAL POCKETS.

Dulwich | 020 8299 2722 | dulwich@winkworth.co.uk

Tenure Freehold | Council Tax Band E – London Borough of Southwark |
 EPC Rating D

winkworth.co.uk

Winkworth

See things differently

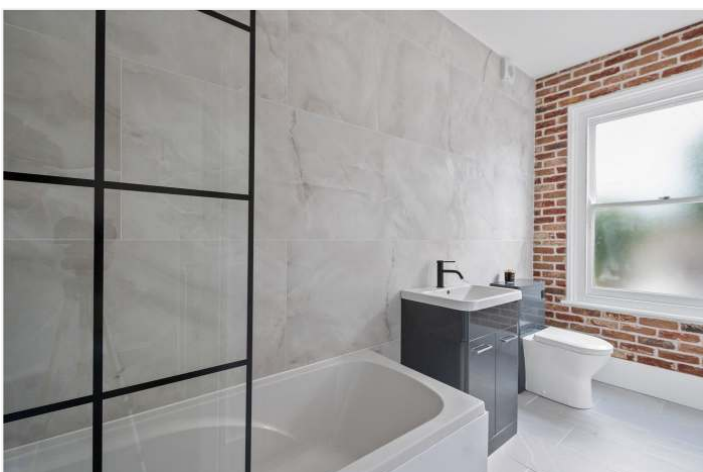


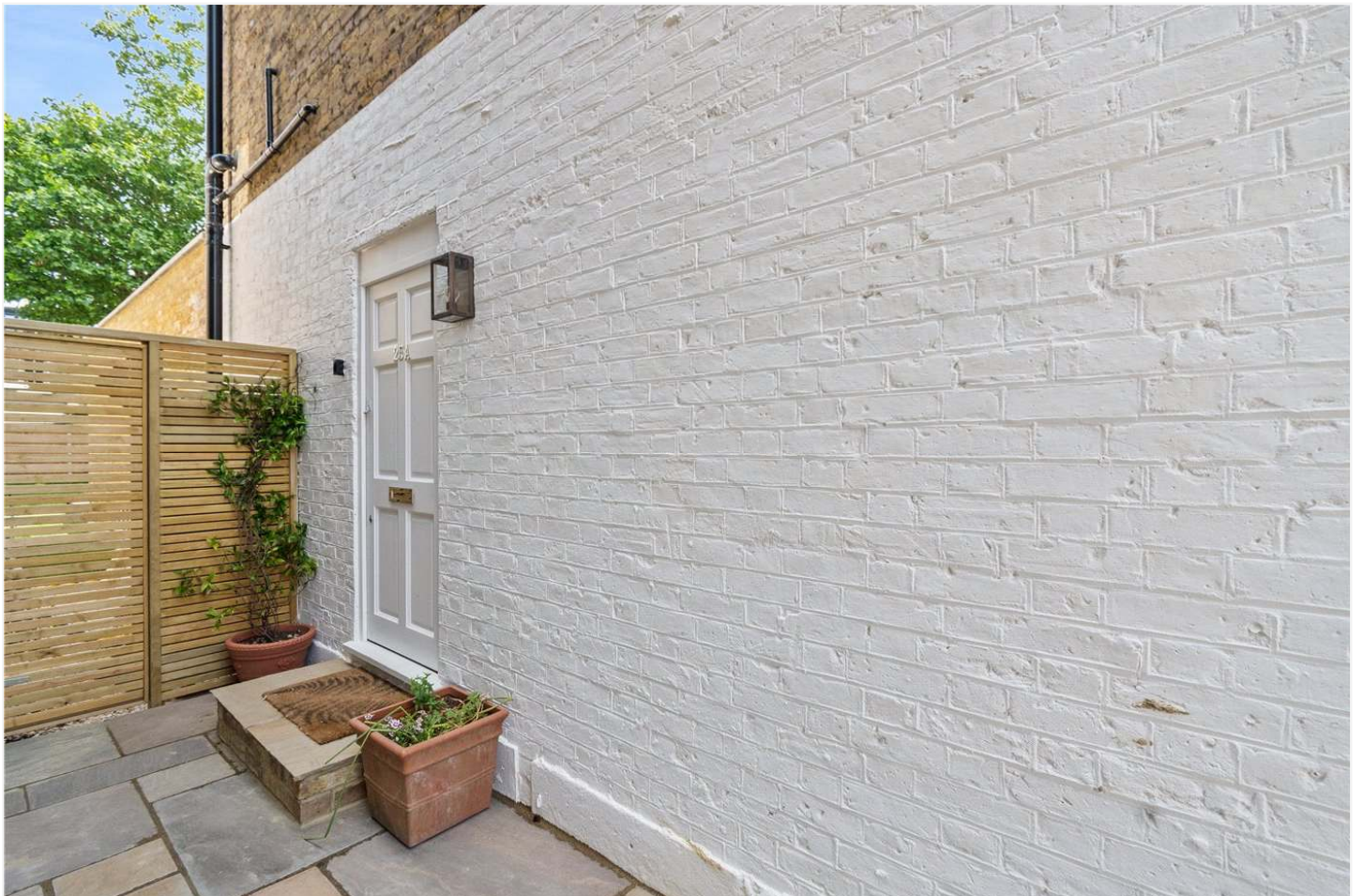
DESCRIPTION:

Set on a quiet, tree-lined street just moments from the vibrant heart of Nunhead, the property showcases a stylish interior, generous proportions, and a thoughtfully designed layout that caters perfectly to contemporary family life. Upon entering, you're greeted by a bright and spacious reception room with original features, elegant flooring, and large sash windows that flood the space with natural light. The sleek and extended kitchen at the rear is a standout feature—fitted with modern appliances, ample storage, and bi-fold doors that open seamlessly onto a landscaped garden, perfect for entertaining or relaxing in the sun. Upstairs, three well-proportioned bedrooms offer comfortable retreats, complemented by a chic, newly refurbished bathroom finished to a high specification. Surrey Road is enviably located in the heart of Nunhead, a flourishing community known for its independent shops, artisan cafes, and welcoming village atmosphere. You're just a short stroll from Nunhead Green and the area's much-loved bakery, deli, and butcher, with green open spaces like Peckham Rye Park and Telegraph Hill within easy reach. The property benefits from excellent transport links, with Nunhead station (Zone 2) providing swift access to London Victoria, Blackfriars, and St Pancras, while nearby Peckham Rye and Queens Road Peckham stations expand your connectivity across the capital. This exceptional home on Surrey Road not only offers stylish interiors and outdoor space, but it also places you at the heart of Nunhead's thriving and increasingly popular community. With great schools nearby, a strong sense of neighbourhood, and a rich cultural scene just minutes away in Peckham and Dulwich, this is an outstanding opportunity to put down roots in one of South London's hidden gems.

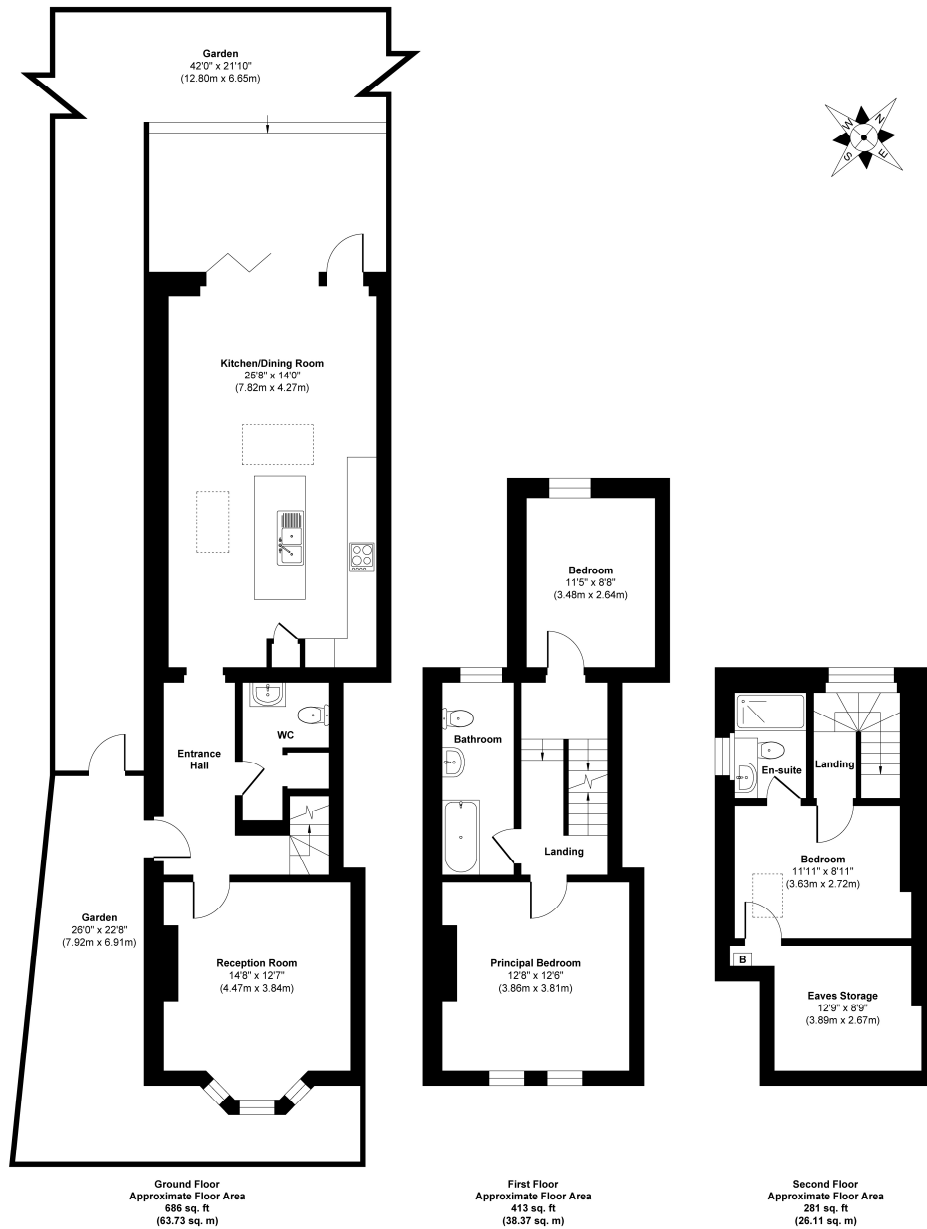
AT A GLANCE

- Three-Bedroom Home
- Victorian House
- Landscaped Garden
- Prime Nunhead Location
- Excellent Transport Links





Surrey Road



This floorplan is for illustration purposes only and is not to scale. The position and size of doors, windows, appliances and other features are approximate.

Score	Energy rating	Current	Potential
92+	A		
81-91	B		84 B
69-80	C		
55-68	D	67 D	
39-54	E		
21-38	F		
1-20	G		

Dulwich | 020 8299 2722 | dulwich@winkworth.co.uk

Winkworth

winkworth.co.uk

See things differently

Winkworth wishes to inform prospective buyers and tenants that these particulars are a guide and act as information only. All our details are given in good faith and believed to be correct at the time of printing but they don't form part of an offer or contract. No Winkworth employee has authority to make or give any representation or warranty in relation to this property. All fixtures and fittings, whether fitted or not are deemed removable by the vendor unless stated otherwise and room sizes are measured between internal wall surfaces, including furnishings.