

AYLESFORD STREET, UK, SW1V

£600,000

SHARE OF FREEHOLD

At a glance...

- Split Level Maisonette
- Excellent Condition
- Two Double Bedrooms
- Own Front Door
- Share of Freehold
- Council Tax Band: E

Winkworth

for every step...



Energy Efficiency Rating		
	Current	Potential
Very energy efficient - lower running costs		
(92+) A		
(81-91) B		
(69-80) C		78
(55-68) D	65	
(39-54) E		
(21-38) F		
(1-20) G		
Not energy efficient - higher running costs		
England, Scotland & Wales		EU Directive 2002/91/EC

AYLESFORD STREET, UK, SW1V

£600,000

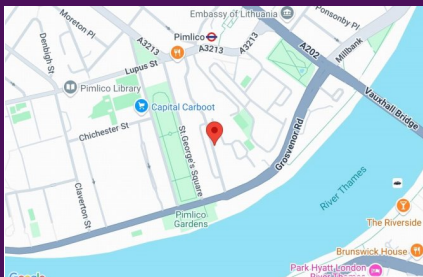
SHARE OF FREEHOLD

Accessed via its own front door this incredible split-level would make an ideal London home or pied a terre.

Incredibly bright throughout the accommodation comprises a spacious reception room with smart open-plan kitchen, two double bedrooms (one on either floor), a newly refurbished bathroom and good storage. In addition the flat has been professionally tanked and all the sash windows have been refurbished.

Aylesford Street is ideally located for the local shops and amenities of Lupus Street, the international food stalls of the Tachbrook Street Market and the smart boutiques and restaurants of the Moreton Triangle.

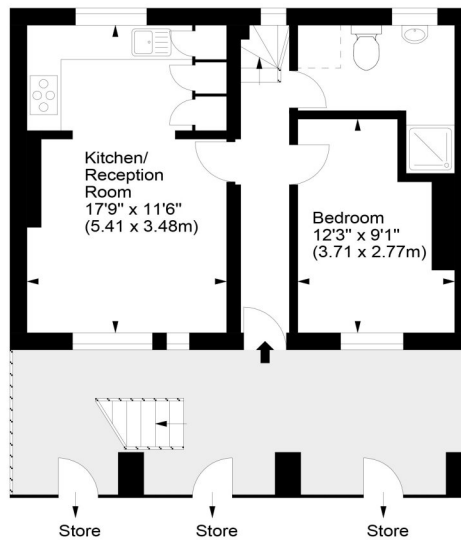
Nearest public transport links can be found close by at Pimlico, Victoria and Vauxhall stations providing excellent links throughout London.



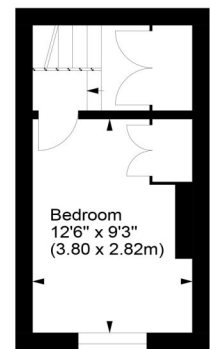
winkworth wishes to inform prospective buyers and tenants that these particulars are a guide and act as information only. All our details are given in good faith and believed to be correct at the time of printing but they don't form part of an offer or contract. No winkworth employee has authority to make or give any representation or warranty in relation to this property. All fixtures and fittings, whether fitted or not are deemed removable by the vendor unless stated otherwise and room sizes are measured between internal wall surfaces - including fireplaces.

Aylesford Street, SW1

Approx. Gross Internal Area
604 Sq Ft - 56.11 Sq M



Lower Ground Floor



Ground Floor

For illustration purposes only. Not to scale.
All measurements are taken and shown at floor level.
www.r3photography.co.uk © Photography / Floor Plans / Lease Plans / EPCs



Pimlico & Westminster

020 7828 1786

pimlico@winkworth.co.uk

winkworth.co.uk/pimlico-westminster

Winkworth

for every step...