



HIGHGATE HILL, N6
£765,000 SHARE OF FREEHOLD

AN EXTRAORDINARY TWO BEDROOM FIRST FLOOR CONVERTED FLAT WITH A PRIVATE, SECRET GARDEN.

Highgate | 020 8341 1988 | highgate@winkworth.co.uk

Winkworth

for every step...

winkworth.co.uk



DESCRIPTION:

This amazing apartment is available to purchase for the first time in many years. It comprises spacious accommodation including two double-sized bedrooms and a large south-facing reception room with delightful views across Highgate Hill over Waterlow Park. But it's not only the inside of the flat that's of interest, it's what's to see on the outside too. This is because it has a private secret garden to the front/side which contains an outbuilding that's ideal for a workshop and storage space.

Back inside and there is plenty of character on offer, with period features galore from fireplaces to sash windows and the flat comes complete with a share of freehold too.

LOCATION:

The property is opposite beautiful grounds of Waterlow Park. It is conveniently positioned for easy access to a variety of amenities including the shops and places to dine in Highgate Village as well as Archway Tube Station and bus routes into the City/ West End.

TENURE:

Lease - 99 years from 25 December 1990 with SHARE OF FREEHOLD. The lease is currently in the process of being extended.

COUNCIL TAX:

London Borough of Haringey. COUNCIL TAX BAND: E (£2,435.06 FOR 2023/24).

PARKING:

The area is a Controlled Parking Zone between 10am and 12pm, Mon-Fri. It is free to park in the local bays at any other time, including weekends. Residents and Visitors permits can be purchased from the Local Authority for in-zone parking times.

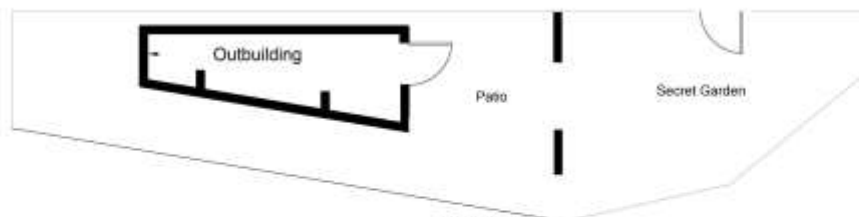


Highgate Hill N6 5HE

Approx. Gross Internal Area = 80.1 sq. m / 862 sq ft



First Floor



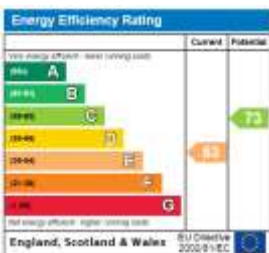
Ground Floor

Ref

Copyright **BLEU PLAN**

The Floor plan is not to scale and measurements and areas shown are approximate and therefore should be used for illustrative purposes only. The plan has been prepared in accordance with the RICS code of Measuring Practice and whilst we have confidence in the information produced it must not be relied on. If there is any aspect of particular importance, you should carry out or commission your own inspection of the property.
Copyright © BLEUPLAN

This floorplan is for illustration purposes only and is not to scale. The position and size of doors, windows, appliances and other features are approximate.



for every step...

Highgate | 020 8341 1988 | highgate@winkworth.co.uk

winkworth.co.uk

Winkworth wishes to inform prospective buyers and tenants that these particulars are a guide and act as information only. All our details are given in good faith and believed to be correct at the time of printing but they don't form part of an offer or contract. No Winkworth employee has authority to make or give any representation or warranty in relation to this property. All fixtures and fittings, whether fitted or not are deemed removable by the vendor unless stated otherwise and room sizes are measured between internal wall surfaces, including furnishings.