



WINGFIELD STREET, PECKHAM RYE, SE15  
OIEO £1,200,000 FREEHOLD

A STUNNING AND BEAUTIFULLY PRESENTED  
FIVE-BEDROOMED FAMILY HOME, SITUATED  
ON A POPULAR RESIDENTIAL ROAD IN SE15.

Dulwich | 020 8299 2722 | [dulwich@winkworth.co.uk](mailto:dulwich@winkworth.co.uk)

**Winkworth**

[winkworth.co.uk](http://winkworth.co.uk)

See things differently



## DESCRIPTION:

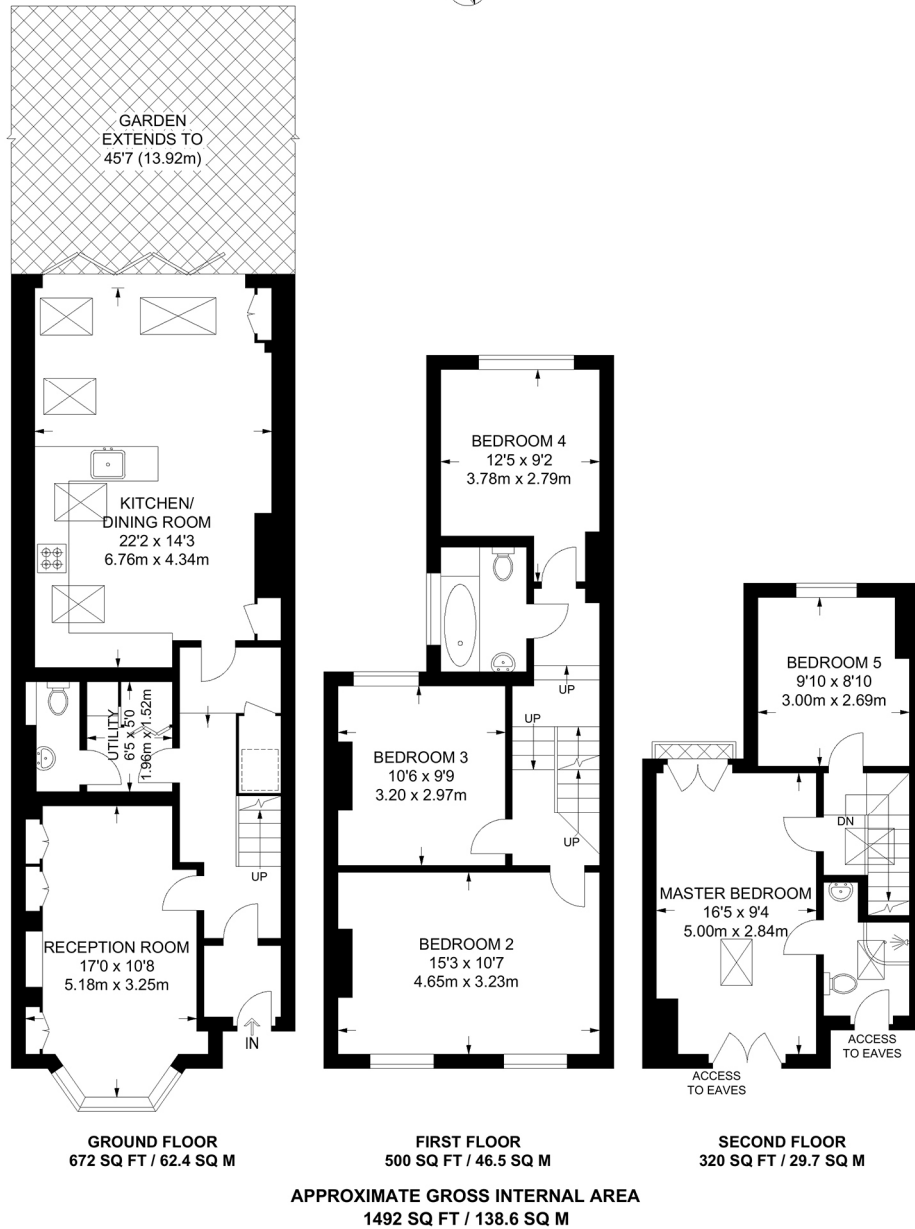
A stunning and beautifully presented family home, situated on a popular residential road in SE15. This beautiful family home is offered to the market in remarkable condition. Comprising a larger than average reception, complete with high ceilings, wood burner and bespoke joinery. Further boasting to the ground floor, a spacious utility room and fully extended kitchen diner, finished to an immaculate standard with large Bi-fold doors leading out to a sunny garden to the rear. The first floor comprises three well-proportioned double bedrooms, a large family bathroom complete with large bath. The loft has been converted to allow for a large master ensuite and further fifth double bedroom. The property is situated within easy access to the shops, bars and restaurants of Lordship Lane and Bellenden Road. Peckham Rye Park is within a short five-minute walk, with Dulwich Park accessible in around 15 minutes. Transport links are provided via Peckham Rye station for the London Overground or East Dulwich for direct links to London Bridge.

## AT A GLANCE

- Five Bedrooms
- Mid Terrace House
- Extended Kitchen-Diner
- Large Reception Room
- Two Bathrooms
- Utility Room & Downstairs Cloakroom
- Very Central Location







This floorplan is for illustration purposes only and is not to scale. The position and size of doors, windows, appliances and other features are approximate.

## EPC TO BE ADDED

Dulwich | 020 8299 2722 | [dulwich@winkworth.co.uk](mailto:dulwich@winkworth.co.uk)

**Winkworth**

[winkworth.co.uk](http://winkworth.co.uk)

See things differently

Winkworth wishes to inform prospective buyers and tenants that these particulars are a guide and act as information only. All our details are given in good faith and believed to be correct at the time of printing but they don't form part of an offer or contract. No Winkworth employee has authority to make or give any representation or warranty in relation to this property. All fixtures and fittings, whether fitted or not are deemed removable by the vendor unless stated otherwise and room sizes are measured between internal wall surfaces, including furnishings.