



Leamington Road Villas, W11

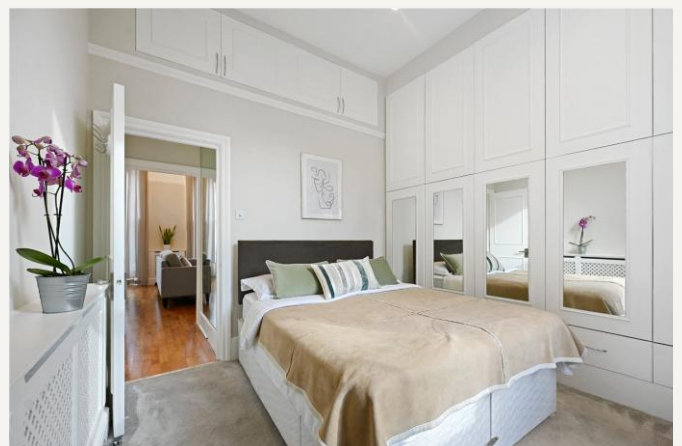
£750 per week (£3,250 pcm) *Furnished*



A stunning one-bedroom flat on the first floor of this pretty period building

KEY FEATURES

- 1 Bedroom
- 1 Reception Room
- 1 Bathroom
- Balcony
- Period
- Furnished



Notting Hill Lettings

0207 727 3227 | nottinghill@winkworth.co.uk

Winkworth

for every step...



A stunning one-bedroom flat on the first floor of this pretty period building with fantastic ceiling height and lovely balcony, semi open plan modern fitted kitchen double bedroom with fantastic storage. Available furnished from mid-February.

Leamington Road Villas is a peaceful, tree lined street running north from Westbourne Park Road, just round the corner from Westbourne Park underground station and a short stroll from Ledbury Road, Westbourne Grove and many of Notting most popular bars and restaurants.

Utilities:

Electricity – Mains

Water – Mains

Sewerage – Mains

Heating – Gas

Broadband <https://checker.ofcom.org.uk/en-gb/broadband-coverage>

Mobile Coverage <https://checker.ofcom.org.uk/en-gb/mobile-coverage>

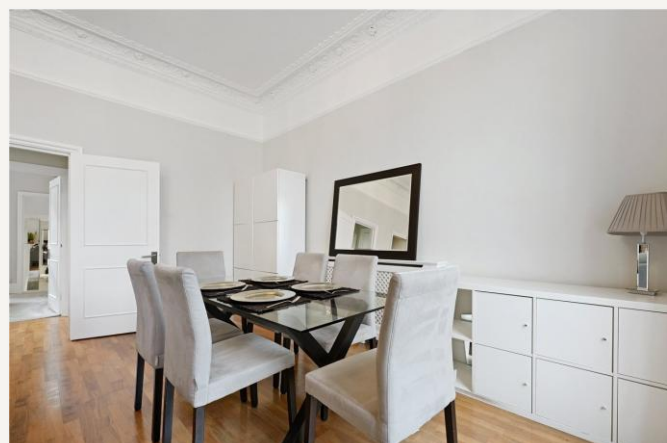


MATERIAL INFO

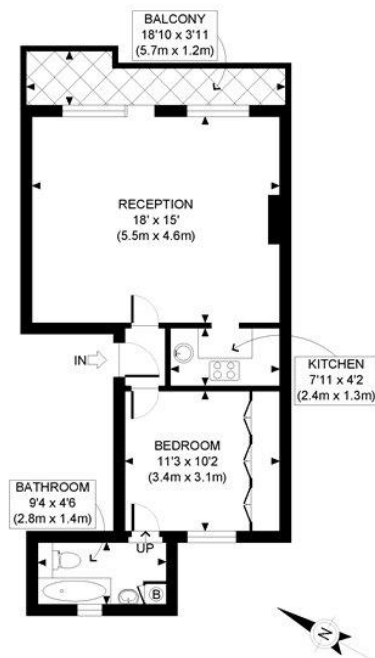
Deposit: £3,750

Holding Deposit: £750

Council Tax Band: D (Westminster)







FIRST FLOOR
GROSS INTERNAL
FLOOR AREA 485 SQ. FT

APPROX. GROSS INTERNAL FLOOR AREA: 485 SQ. FT/ 45 SQM

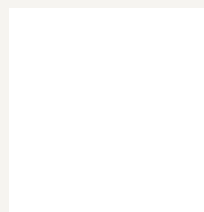
Winkworth

This plan is for illustrative purposes only and should be used as such by any prospective client. Whilst every attempt has been made to ensure the accuracy of the Floor Plan contained here, measurements of the doors, windows, rooms and any other items are approximate and no responsibility is taken for any errors, omissions, or misstatement. The services, systems and appliances shown have not been tested and no guarantee as to the operability or efficiency can be given.

PROPERTY PHOTO PLANS

Score	Energy rating	Current	Potential
92+	A		
81-91	B		
69-80	C		78 C
55-68	D	60 D	
39-54	E		
21-38	F		
1-20	G		

For more information, scan the QR code or visit the link below



<https://www.winkworth.co.uk/rent/property/NHS100048>

Where no figures are shown, we have been unable to ascertain the information. All figures that are shown were correct at the time of printing.

Notting Hill Lettings

0207 727 3227 | nottinghill@winkworth.co.uk

Winkworth

for every step...

Winkworth wishes to inform prospective buyers and tenants that these particulars are a guide and act as information only. All our details are given in good faith and believed to be correct at the time of printing but they don't form part of an offer or contract. No Winkworth employee has authority to make or give any representation or warranty in relation to this property. All fixtures and fittings, whether fitted or not are deemed removable by the vendor unless stated otherwise and room sizes are measured between internal wall surfaces, including furnishings.