



SUTHERLAND PLACE, W2  
**£545 PER WEEK (£2,361.66 PCM) FURNISHED**

**A VERY CHARMING AND SPACIOUS ONE DOUBLE  
BEDROOM FLAT.**

Notting Hill Lettings | 0207 727 3227 | nottinghill@winkworth.co.uk

**Winkworth**

for every step...

*winkworth.co.uk*





### DESCRIPTION:

A beautifully presented one bedroom flat on this charming tree lined street. The flat benefits from having its own entrance, fully fitted separate kitchen, spacious reception room with wood floors, bedroom and a spacious bathroom. Available furnished and viewings are highly recommended. Working professionals only please!

### Utilities:

Electricity – Mains

Water – Mains

Sewerage – Mains

Heating – Gas

Broadband <https://checker.ofcom.org.uk/en-gb/broadband-coverage>

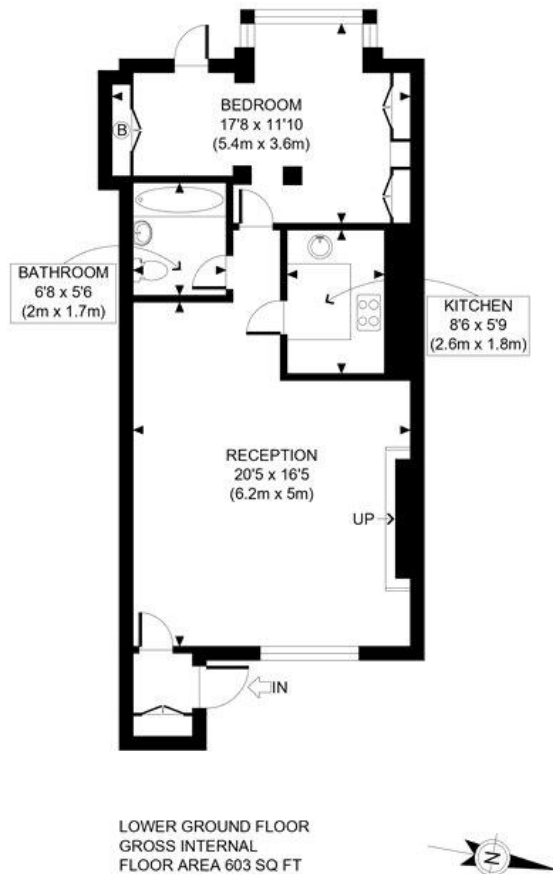
Mobile Coverage <https://checker.ofcom.org.uk/en-gb/mobile-coverage>

### LOCATION:

Sutherland Place is a peaceful, tree lined street in the ever-popular Artesian Road group of streets, well placed just to the east of Ledbury Road and the north of Westbourne Grove, moments from many of Notting Hill's most fashionable boutiques and restaurants.







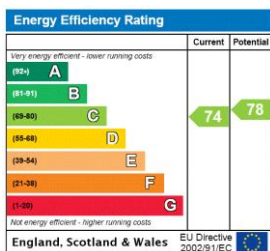
APPROX. GROSS INTERNAL FLOOR AREA: 603 SQ FT/ 56 SQM

**Winkworth**

This plan is for illustrative purposes only and should be used as such by any prospective client. Whilst every attempt has been made to ensure the accuracy of the Floor Plan contained here, measurements of the doors, windows, rooms and any other items are approximate and no responsibility is taken for any errors, omissions, or misstatement. The services, systems and appliances shown have not been tested and no guarantee as to the operability or efficiency can be given.

PROPERTY PHOTO PLANS

This floorplan is for illustration purposes only and is not to scale. The position and size of doors, windows, appliances and other features are approximate.



**Deposit: £2,725**

**Holding Deposit: £545**

**Council Tax Band: C (Westminster)**

Where no figures are shown, we have been unable to ascertain the information. All figures that are shown were correct at the time of printing.

Notting Hill Lettings | 0207 727 3227 | nottinghill@winkworth.co.uk

**Winkworth**

for every step...

winkworth.co.uk

Winkworth wishes to inform prospective buyers and tenants that these particulars are a guide and act as information only. All our details are given in good faith and believed to be correct at the time of printing but they don't form part of an offer or contract. No Winkworth employee has authority to make or give any representation or warranty in relation to this property. All fixtures and fittings, whether fitted or not are deemed removable by the vendor unless stated otherwise and room sizes are measured between internal wall surfaces, including furnishings.