



## Colville Terrace, W11

£775 per week (£3,358.33 PCM) *Unfurnished*



An outstanding raised ground floor, one bedroom apartment, completely refurbished by Pembridge Developments.

### KEY FEATURES

- 1 Bedroom
- 1 Reception Room
- 1 Bathroom
- 543 Sq Ft
- Ground Floor
- Period



Notting Hill Lettings

0207 727 3227 | [nottinghill@winkworth.co.uk](mailto:nottinghill@winkworth.co.uk)

**Winkworth**

for every step...





An outstanding raised ground floor, one bedroom apartment, completely refurbished by Pembridge Developments. Extending to 543 sq.ft feet, this luxurious apartment comprises; entrance hall, open plan reception/dining/kitchen, bathroom and bedroom to the rear. Finished to the highest standards there is parquet wooden flooring throughout combined with fantastic period features, a large bay window and excellent ceiling heights throughout.

Colville Terrace is a popular residential street running from Portobello Road to Ledbury Road, and the property is ideally located just to the east of Portobello Road, a moment's walk from its many boutiques, bars and restaurants. It is within easy walking distance of the many transport connections of Notting Hill Gate.

#### Utilities:

Electricity – Mains

Water – Mains

Sewerage – Mains

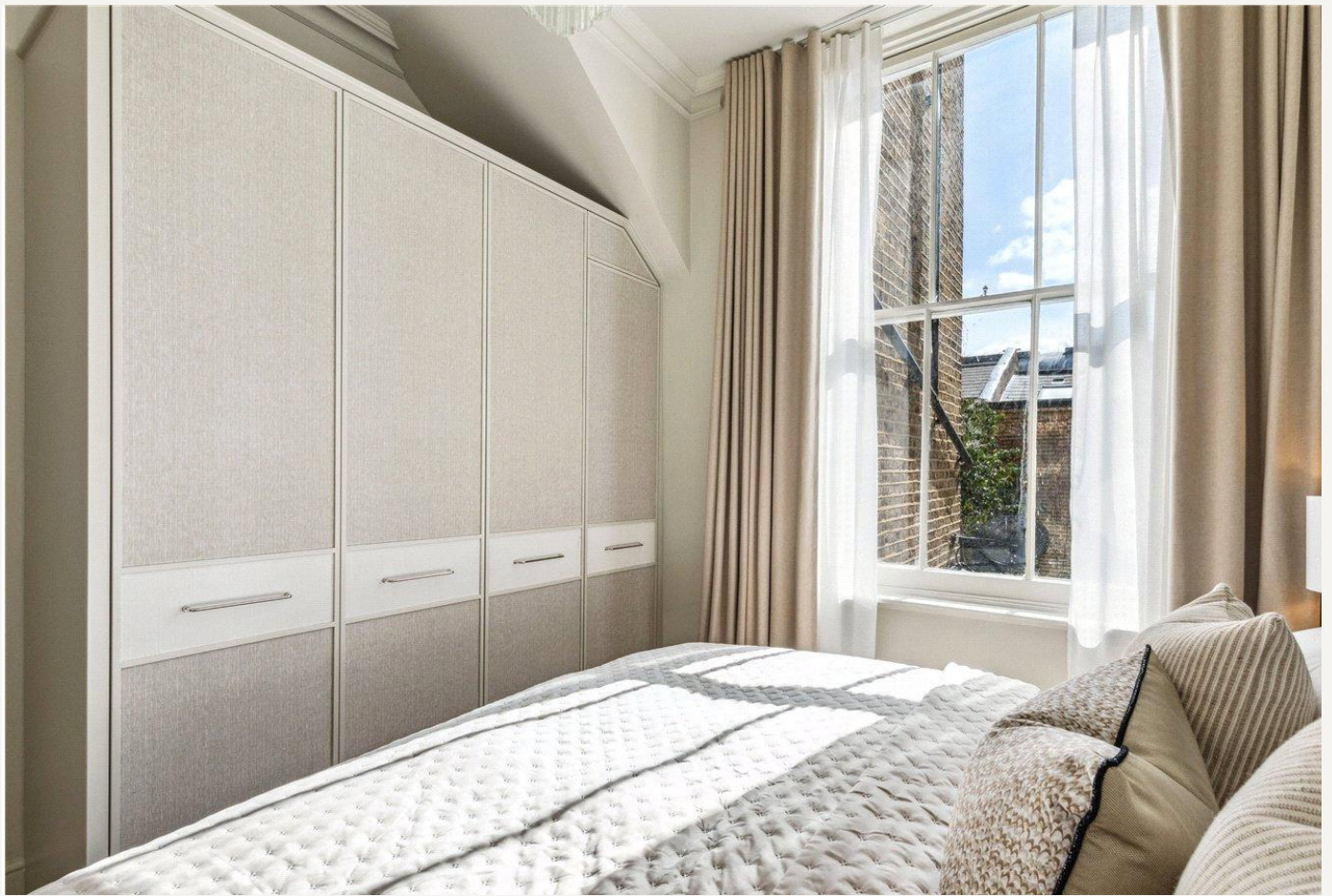
Heating – Gas

Broadband <https://checker.ofcom.org.uk/en-gb/broadband-coverage>

Mobile Coverage <https://checker.ofcom.org.uk/en-gb/mobile-coverage>







## MATERIAL INFO

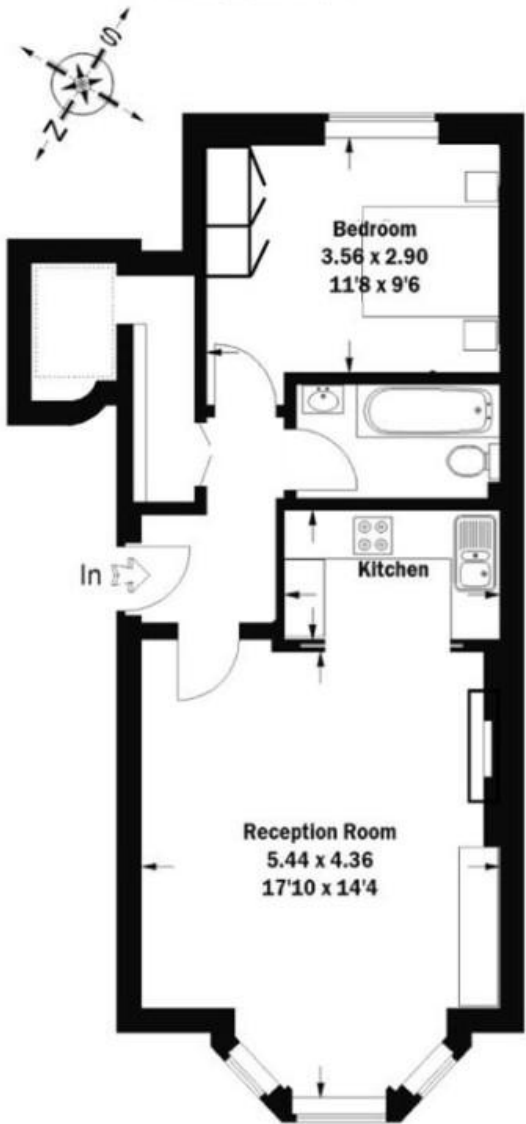
**Deposit:** £3,875

**Holding Deposit:** £775

**Council Tax Band:** D (RBKC)

Colville Terrace, W11

Approximate Gross Internal Area  
50.5 sq m / 543 sq ft



Score	Energy rating	Current	Potential
92+	A		
81-91	B		
69-80	C	70 C	75 C
55-68	D		
39-54	E		
21-38	F		
1-20	G		

For more information, scan the QR code or visit the link below



<https://www.winkworth.co.uk/rent/property/NHS260042>

Where no figures are shown, we have been unable to ascertain the information. All figures that are shown were correct at the time of printing.

Notting Hill Lettings  
0207 727 3227 | [nottinghill@winkworth.co.uk](mailto:nottinghill@winkworth.co.uk)

**Winkworth**  
for every step...

Winkworth wishes to inform prospective buyers and tenants that these particulars are a guide and act as information only. All our details are given in good faith and believed to be correct at the time of printing but they don't form part of an offer or contract. No Winkworth employee has authority to make or give any representation or warranty in relation to this property. All fixtures and fittings, whether fitted or not are deemed removable by the vendor unless stated otherwise and room sizes are measured between internal wall surfaces, including furnishings.