



BATHURST GARDENS, LONDON, NW10
£500,000 LEASEHOLD

A FANTASTIC TWO BEDROOM FIRST FLOOR APARTMENT IN THIS GREAT LOCATION CLOSE TO COLLEGE ROAD AND TRANSPORT AT KENSAL GREEN STATION.

Kensal Rise & Queens Park | 0208 960 4947 | kensalrise@winkworth.co.uk

Winkworth

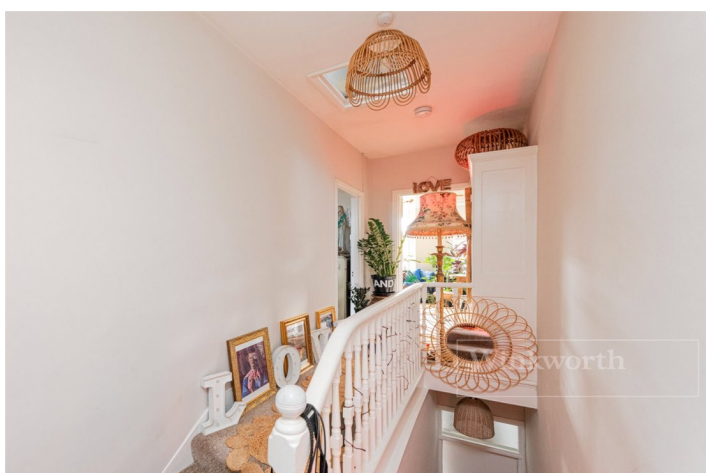
[winkworth.co.uk](https://www.winkworth.co.uk)

See things differently



LOCATION:

Bathurst Gardens is a fantastic and popular location for its transport links at Kensal Green Station (Bakerloo Line and Overground). The amenities of College Road are a short walk away, offering favourites such as Kensal Store, The Island Gastropub, Sonora Cafe and L'Angolo Italian Deli. Chamberlayne Road and Queens Park itself are also within easy access.

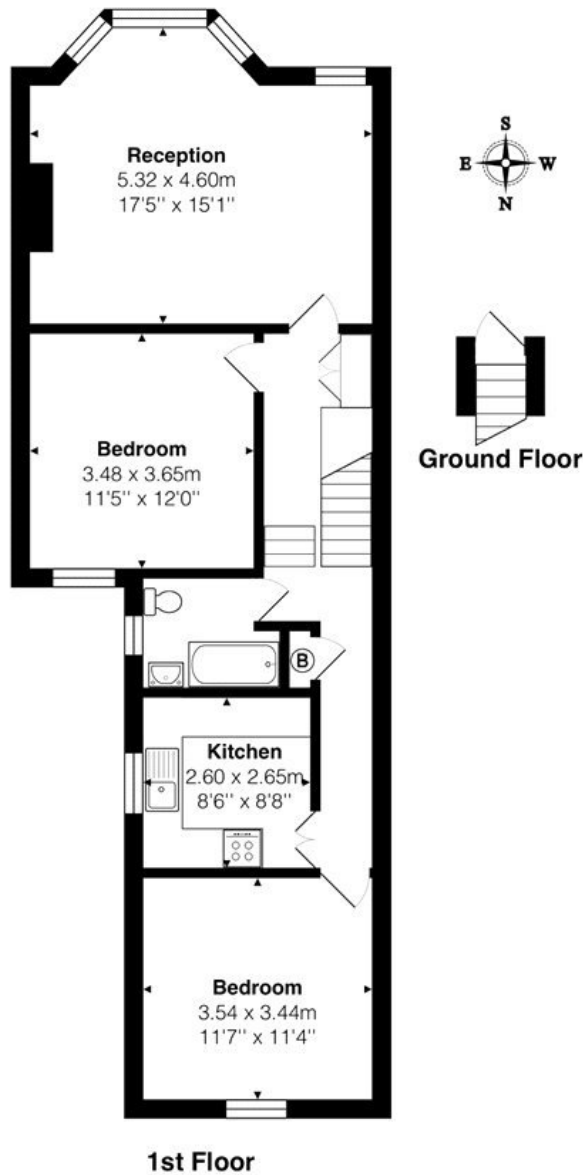




DESCRIPTION:

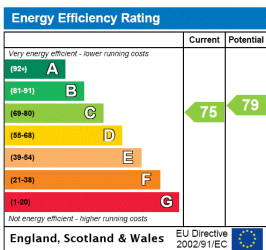
A fantastic two bedroom first floor apartment in this great location close to College Road and transport at Kensal Green Station.





Total Area: 72.1 m² ... 777 ft²
All measurements are approximate and for display purposes only

This floorplan is for illustration purposes only and is not to scale. The position and size of doors, windows, appliances and other features are approximate.



Kensal Rise & Queens Park | 0208 960 4947 | kensalrise@winkworth.co.uk



winkworth.co.uk

See things differently

winkworth wishes to inform prospective buyers and tenants that these particulars are a guide and act as information only. All our details are given in good faith and believed to be correct at the time of printing but they don't form part of an offer or contract. No winkworth employee has authority to make or give any representation or warranty in relation to this property. All fixtures and fittings, whether fitted or not are deemed removable by the vendor unless stated otherwise and room sizes are measured between internal wall surfaces, including furnishings.