



CHASEWOOD COURT, HALE LANE, MILL HILL, LONDON, NW7
£325,000 LEASEHOLD

TWO BEDROOM FLAT IN MILL HILL

- GROUND RENT APPROX £50 PER ANNUM
- SERVICE CHARGE APPROX £2,500 PER ANNUM

Kingsbury | 020 8204 0000 | kingsbury@winkworth.co.uk

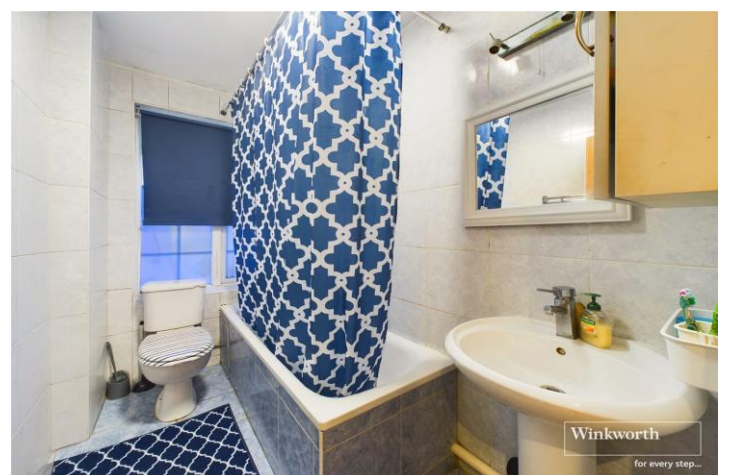
Winkworth

for every step...

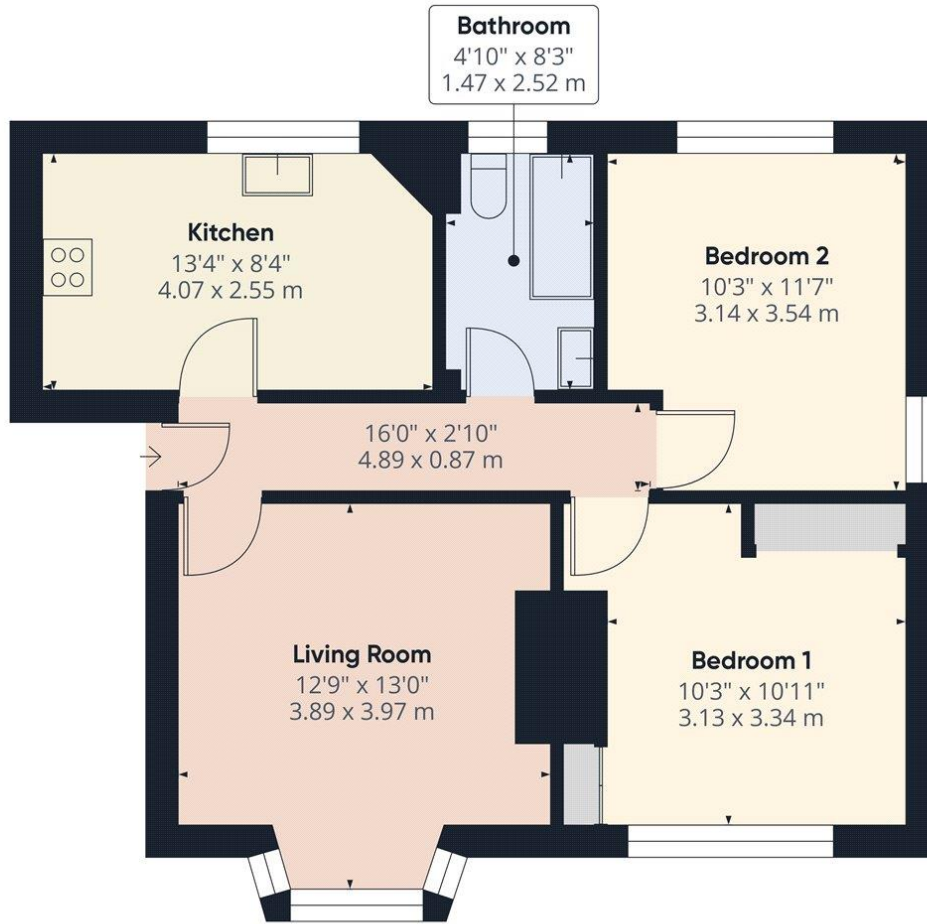
winkworth.co.uk



DESCRIPTION: A two-bedroom flat located on the third floor, accessible via stairs of a purpose-built block in the sought after area of Mill Hill. Sold with tenants in situ, this property offers immediate rental income for investors. The flat features a lounge, functional kitchen, two well-proportioned bedrooms, and a bathroom. Situated just a short walk from Mill Hill Overground and bus Station, it provides excellent transport links. The property is also within easy reach of local shops, cafes, and amenities. For more details or to arrange a viewing, contact us today!



for every step...



Approximate total area⁽¹⁾
 579.95 ft²
 53.88 m²

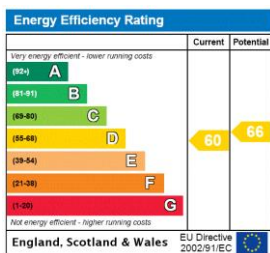
(1) Excluding balconies and terraces

While every attempt has been made to ensure accuracy, all measurements are approximate, not to scale. This floor plan is for illustrative purposes only.

Calculations were based on RICS IPMS 3C standard. Please note that calculations were adjusted by a third party and therefore may not comply with RICS IPMS 3C.

GIRAFFE360

This floorplan is for illustration purposes only and is not to scale. The position and size of doors, windows, appliances and other features are approximate.



Tenure: Leasehold

Term: 140 year and 11 months

Service Charge: £2500 per annum approx

Ground Rent: £ 50 per annum approx. (subject to increase)

Council Tax Band: C - Barnet

Where no figures are shown, we have been unable to ascertain the information. All figures that are shown were correct at the time of printing.



for every step...

Kingsbury | 020 8204 0000 | kingsbury@winkworth.co.uk

winkworth.co.uk

Winkworth wishes to inform prospective buyers and tenants that these particulars are a guide and act as information only. All our details are given in good faith and believed to be correct at the time of printing but they don't form part of an offer or contract. No Winkworth employee has authority to make or give any representation or warranty in relation to this property. All fixtures and fittings, whether fitted or not are deemed removable by the vendor unless stated otherwise and room sizes are measured between internal wall surfaces, including furnishings.