



Winkworth

for every step...



Winkworth
for every step...



Winkworth
for every step...

MARDALE DRIVE, KINGSBURY, LONDON, NW9
£670,000 FREEHOLD

THREE BEDROOM SEMI DETACHED HOUSE KINGSBURY

Kingsbury | 020 8204 0000 | kingsbury@winkworth.co.uk



winkworth.co.uk

See things differently

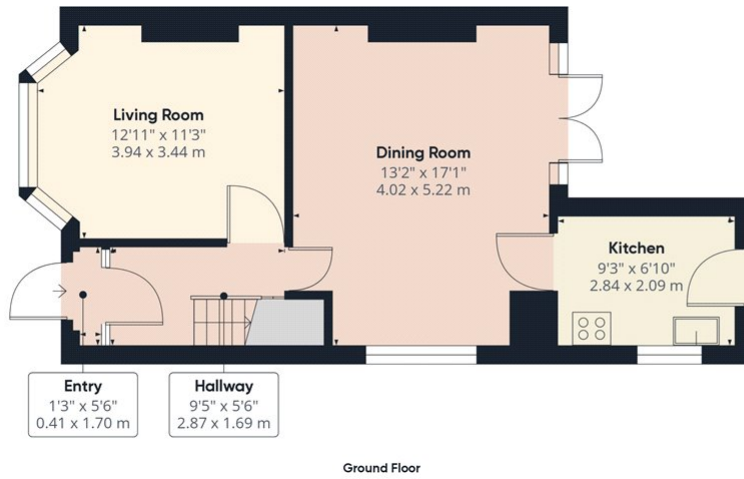


DESCRIPTION: This wonderful three-bedroom semi-detached house presents an enticing opportunity for both families seeking a comfortable residence and investors eyeing a lucrative buy-to-let venture. Nestled in a desirable neighbourhood, the property boasts convenient off-street parking as well as a garage, offering practicality and ease of access. With two ample reception rooms, a basic kitchen, and one well-appointed bathroom, this home provides functionality while also offering potential for slight modernization to suit individual tastes and preferences. The layout and three well sized bedrooms offer ample room for a growing family, ensuring versatility in its use. Moreover, the property presents a generous rear garden perfect for entertaining family gatherings as well as an exciting prospect for expansion, subject to obtaining necessary planning permissions. This flexibility allows for customization and enhancement to further maximize its potential and value.



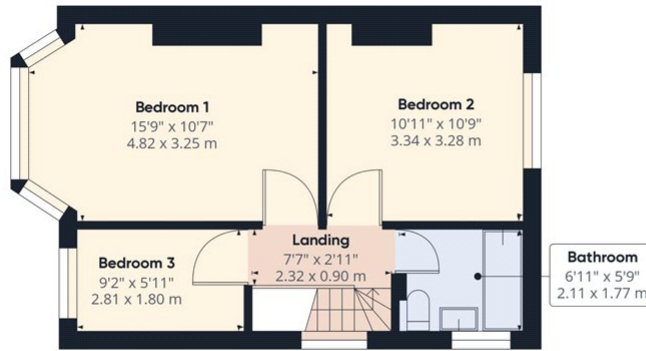


Winkworth



Ground Floor

Approximate total area⁽¹⁾
882.02 ft²
81.94 m²



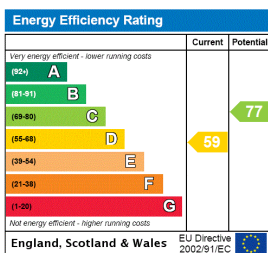
Floor 1

(1) Excluding balconies and terraces

While every attempt has been made to ensure accuracy, all measurements are approximate, not to scale. This floor plan is for illustrative purposes only.

GIRAFFE360

This floorplan is for illustration purposes only and is not to scale. The position and size of doors, windows, appliances and other features are approximate.



Kingsbury | 020 8204 0000 | kingsbury@winkworth.co.uk