



CAMBALT HOUSE, LONDON, SW15
£2,700 PER MONTH FURNISHED

A very well presented three bedroom flat located on the second floor (with lift) of this prestigious development

Putney | 020 8877 1000 | putney@winkworth.co.uk

Winkworth

for every step...

winkworth.co.uk



DESCRIPTION:

A very well presented three bedroom flat located on the second floor (with lift) of this prestigious development. The property boasts a good size reception room complemented by a kitchen/dining room of the hallway. There are two good size double bedrooms, a smaller third bedroom (which is ideal as a study or nursery) and two bathrooms (one being ensuite). There is also a balcony, lift and allocated off street parking space. Cambalt House is situated on the corner of Putney Hill and Cambalt Road and is within 100 meters of Putney mainline station and East Putney underground station.

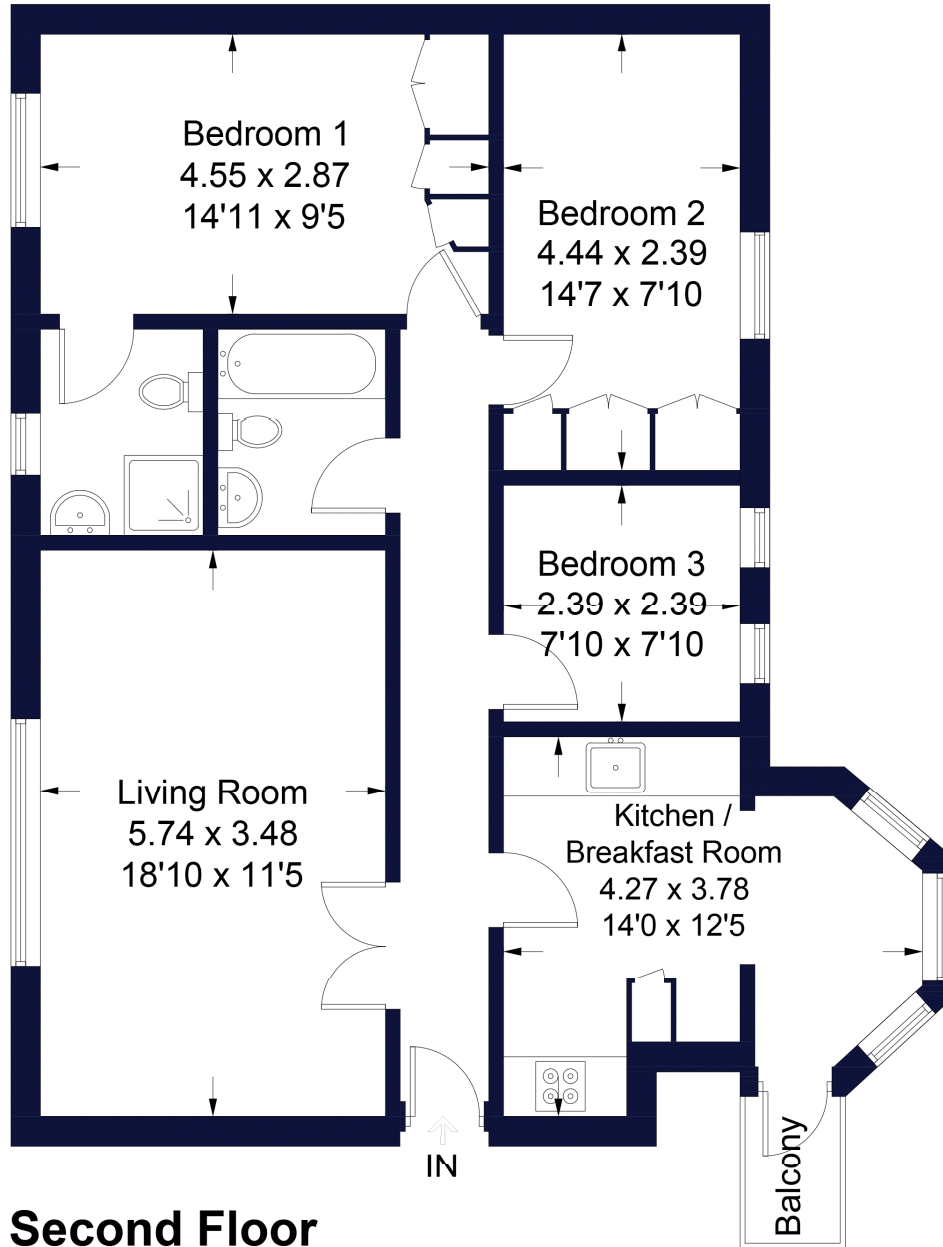




Cambalt House

Winkworth

Approximate Gross Internal Area Total = 81.6 sq m / 878 sq ft



Second Floor

Illustration for identification purposes only, measurements are approximate, not to scale. FloorplansUsketch.com © 2019 (ID566289)

This floorplan is for illustration purposes only and is not to scale. The position and size of doors, windows, appliances and other features are approximate.

Deposit: £0.00

Council Tax Band:

Where no figures are shown, we have been unable to ascertain the information. All figures that are shown were correct at the time of printing.

Energy Efficiency Rating		Current	Potential
Very energy efficient - lower running costs			
(92)	A		
(81-91)	B		
(69-80)	C	78	79
(55-68)	D		
(39-54)	E		
(21-38)	F		
(1-20)	G		
Not energy efficient - higher running costs			
England, Scotland & Wales		EU Directive 2002/91/EC	

Putney | 020 8877 1000 | putney@winkworth.co.uk

Winkworth

for every step...

winkworth.co.uk

Winkworth wishes to inform prospective buyers and tenants that these particulars are a guide and act as information only. All our details are given in good faith and believed to be correct at the time of printing but they don't form part of an offer or contract. No Winkworth employee has authority to make or give any representation or warranty in relation to this property. All fixtures and fittings, whether fitted or not are deemed removable by the vendor unless stated otherwise and room sizes are measured between internal wall surfaces, including furnishings.