

BLAKES QUAY, READING, BERKSHIRE, RG1 3EW
£1,650 PER MONTH FURNISHED

TWO BEDROOM APARTMENT OVERLOOKING THE RIVER KENNET IN GATED TOWN CENTRE DEVELOPMENT.

Reading | 0118 4022 300 | reading@winkworth.co.uk

Winkworth

for every step...

winkworth.co.uk



DESCRIPTION:

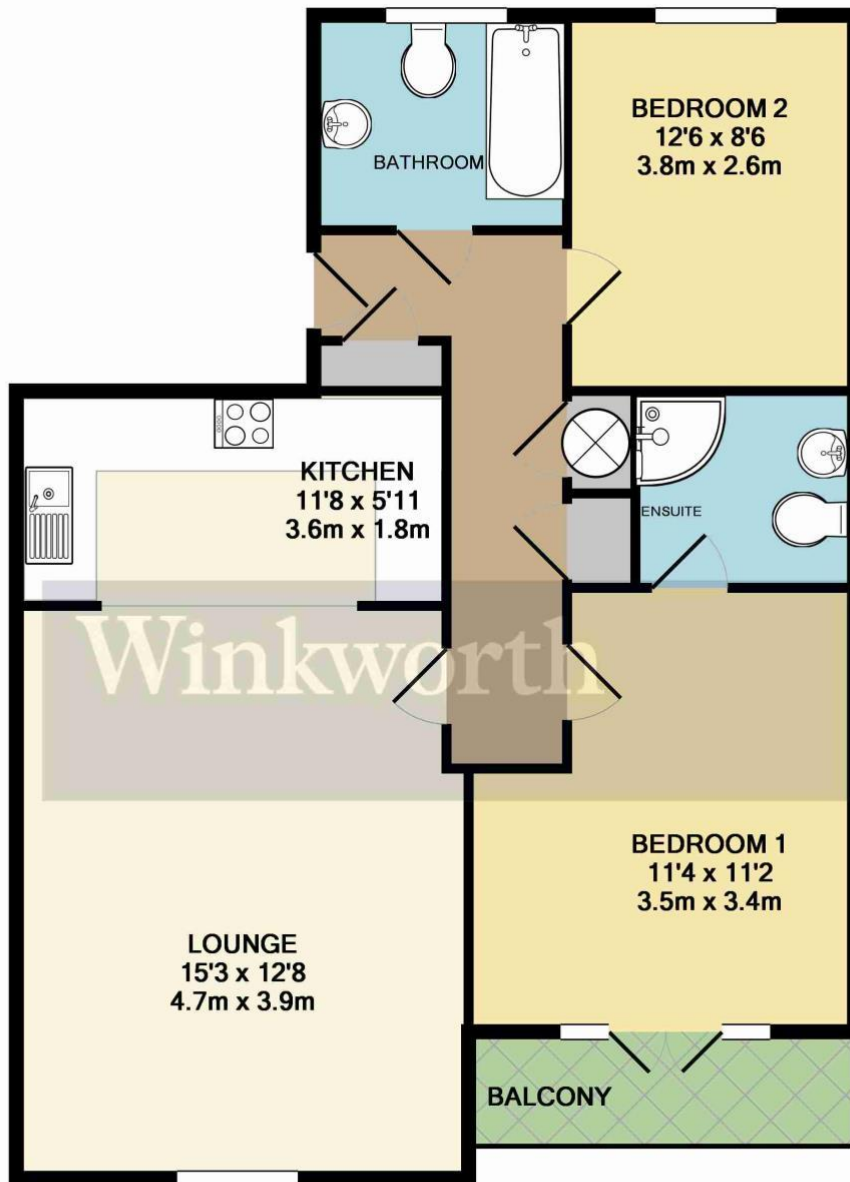
A delightful contemporary second floor apartment overlooking the River Kennet, close to the town centre and mainline train station. The property comprises two double bedrooms, two bathrooms, open plan lounge/kitchen with integrated appliances, secure allocated parking space and a south facing balcony. The property benefits from a resident's gym and games room, double-glazing throughout, built in storage cupboards, a video entry phone system and an allocated undercroft parking. Available 1st October 2025. Furnished.

AT A GLANCE

- Two bedroom apartment
- Located in Reading town centre
- Two bathrooms
- South facing terrace overlooking river
- Council tax band D
- Secure undercroft parking space
- Available 1st October







TOTAL APPROX. FLOOR AREA 860 SQ.FT. (79.9 SQ.M.)

Whilst every attempt has been made to ensure the accuracy of the floor plan contained here, measurements of doors, windows, rooms and any other items are approximate and no responsibility is taken for any error, omission, or mis-statement. This plan is for illustrative purposes only and should be used as such by any prospective purchaser. The services, systems and appliances shown have not been tested and no guarantee as to their operability or efficiency can be given
Made with Metropix ©2015

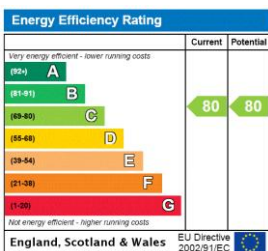
This floorplan is for illustration purposes only and is not to scale. The position and size of doors, windows, appliances and other features are approximate.

Deposit: £1,903.85

Holding Deposit: £380.76

Council Tax Band: D

Where no figures are shown, we have been unable to ascertain the information. All figures that are shown were correct at the time of printing.



Reading | 0118 4022 300 | reading@winkworth.co.uk

Winkworth

for every step...

winkworth.co.uk

Winkworth wishes to inform prospective buyers and tenants that these particulars are a guide and act as information only. All our details are given in good faith and believed to be correct at the time of printing but they don't form part of an offer or contract. No Winkworth employee has authority to make or give any representation or warranty in relation to this property. All fixtures and fittings, whether fitted or not are deemed removable by the vendor unless stated otherwise and room sizes are measured between internal wall surfaces, including furnishings.