



IVY ROAD, CRICKLEWOOD, LONDON, NW2
£1,850 PER MONTH PART FURNISHED

**A BRIGHT AND SPACIOUS TWO DOUBLE
BEDROOM APARTMENT ARRANGED OVER THE
FIRST FLOOR OF AN ATTRACTIVE PERIOD
BUILDING.**

Kensal Rise & Queens Park | 0208 960 4947 | kensalrise@winkworth.co.uk

Tenant Fees Apply: Details of fees for tenant referencing, tenancy agreement admin fees and renewal fees are available on the Winkworth website and the link can be found with the displayed rent for the property. Tenants should ensure they are fully conversant with these upfront fees and other costs that are involved at the outset of the tenancy before making an offer to rent and your local Winkworth office will provide written details upon request.



DESCRIPTION:

This lovely two double bedroom first floor apartment is offered to the market furnished and is situated perfectly to take advantage of Gladstone Parks green spaces and the amenities of Willesden Green.

The property is over 700 sq. ft. and benefits from a large reception room with hard wood flooring and feature fireplace, two good size double bedrooms with built in storage, a newly fitted modern kitchen and three piece fully tiled bathroom.

2025 Furnishing

Back bedroom

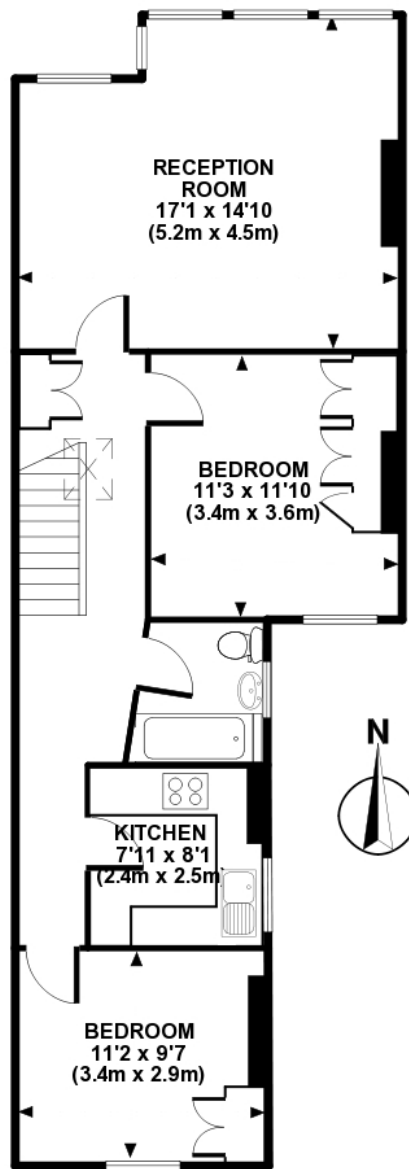
- Bedside table
- Built in wardrobe

AT A GLANCE

- Two Double Bedrooms
- Large Bright Reception Room
- Wooden Flooring
- Separate Kitchen
- First Floor
- Furnished







FIRST FLOOR

APPROX GROSS INTERNAL FLOOR AREA: 712 sq. ft / 66 sq. m

FOR IDENTIFICATION PURPOSES ONLY - NOT TO SCALE
www.winkworth.co.uk

This floorplan is for illustration purposes only and is not to scale. The position and size of doors, windows, appliances and other features are approximate.

Energy Efficiency Rating		
	Current	Potential
Very energy efficient - lower running costs		
(92-100) A		
(81-91) B		
(69-80) C	72	78
(55-68) D		
(39-54) E		
(21-38) F		
(1-20) G		
Not energy efficient - higher running costs		
England, Scotland & Wales		
EU Directive 2002/91/EC		

Deposit: £2,134.62

Holding Deposit:

Council Tax Band: C

Where no figures are shown, we have been unable to ascertain the information. All figures that are shown were correct at the time of printing.