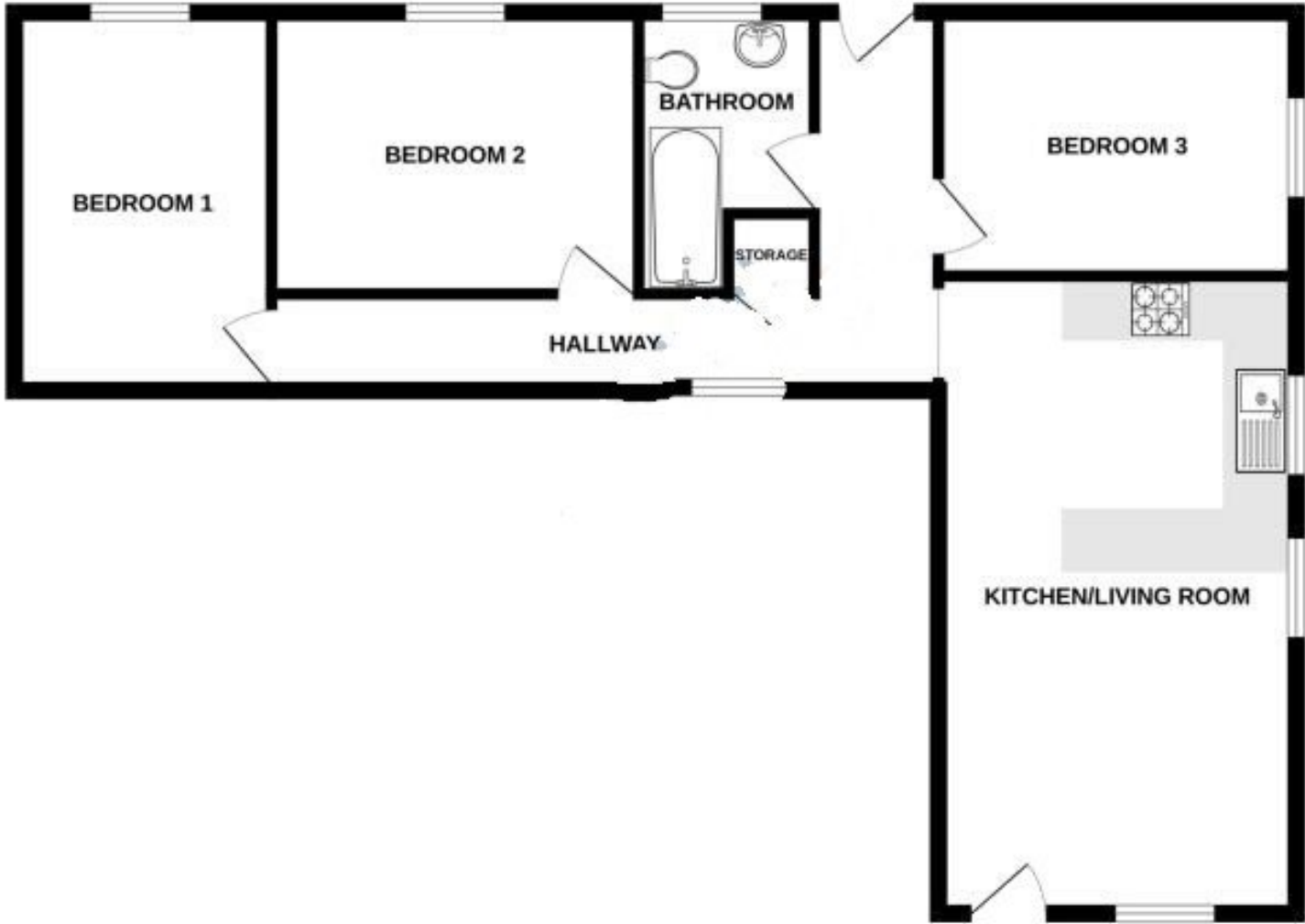


32B, West Street, Bourne, Lincolnshire

This floorplan is for illustration purposes only and is not to scale. The position and size of doors, windows, appliances and other features are approximate.

Score	Energy rating	Current	Potential
92+	A		
81-91	B		83 B
69-80	C		
55-68	D		
39-54	E	53 E	
21-38	F		



32B, West Street, Bourne, Lincolnshire, PE10 9NE

£175,000 Freehold

Located in the heart of the town centre with all of Bourne's amenities on your doorstep this three bedroom detached bungalow is a must view. The property offers spacious accommodation benefiting from, open plan kitchen/living room, spacious hallway, three well-proportioned bedrooms and a family bathroom. The property also benefits from new carpets throughout, upvc double glazed windows and doors and electric heating. Outside there is a private fully enclosed garden ideal for any keen gardener or a perfect place to sit and relax. This property is offered for sale with NO CHAIN and please call us on 01778 392807 for more information.

Winkworth Bourne | 01778392807 |
bourne@winkworth.co.uk
winkworth.co.uk/bourne

Under the Property Misdescriptions Act 1991, the Particulars are a guide and act as information only. All details are given in good faith and are believed to be correct at time of printing. Winkworth give no representation as to their accuracy and potential purchasers or tenants must satisfy themselves by inspection or otherwise as to their correctness. No employee at Winkworth has authority to make or give any representation or warranty in the relation to this property.



winkworth.co.uk/bourne

See things differently.



Outside - The rear garden is fully enclosed with a paved patio leading to a lawned garden with shrub and tree borders.

LOCAL AUTHORITY

South Kesteven

TENURE

Freehold

COUNCIL TAX BAND

A

SERVICE CHARGE

£0

GROUND RENT

£0

DIRECTIONS

ACCOMMODATION

Kitchen/Living Room - 21'4" x 12' (6.5m x 3.66m) Being open plan with modern fitted units comprising, sink with cupboard below, excellent range of wall and base units, built in oven and hob with extractor above, space for fridge, space and plumbing for washing machine, space and plumbing for dishwasher, part tiled walls, upvc double glazed windows to the front and side, wall mounted electric heaters and door to:

Inner Hall - With doors leading to the three bedrooms and bathroom, door to the rear garden.

Bedroom One - 12'9" x 8'8" (3.89m x 2.64m) With upvc double window to the rear, power points and wall mounted electric heater.

Bedroom Two - 12'4" x 8'11" (3.76m x 2.72m) With upvc double window to the rear, power points and wall mounted electric heater.

Bedroom Three - 11'9" x 8'10" (3.58m x 2.7m) With upvc double window to the side, power points and wall mounted electric heater.

Bathroom - With panelled bath, low level wc, wash hand basin, part tiled walls and upvc double glazed frosted window.

