



Arminger Road, Shepherd's Bush, W12

£600,000 Leasehold

A two bedroom flat on the ground floor of an attractive mid-terrace Victorian house, on this most sought after road.

Reception Room | Kitchen | 2 Bedrooms | Bathroom | Garden | 964 Sq Ft / 90 Sq M | Council Tax Band D | EPC Rating Band C

Winkworth



LOCATION

Arminger Road is an attractive residential street, close to all the local amenities and transport links Shepherd's Bush has to offer, such as

Hammersmith Park, Television Centre, Soho House and Westfield London. Shepherd's Bush Market station (Hammersmith and City and Circle line) and Shepherds Bush station (Central line and Overground) are all within easy reach.

DESCRIPTION

The property offers accommodation comprising entrance hall, reception room, two bedrooms, bathroom and kitchen with ample space for dining table. Further benefits include a large cellar and private garden. The property could be extended/reconfigured, subject to the usual necessary consents being obtained.

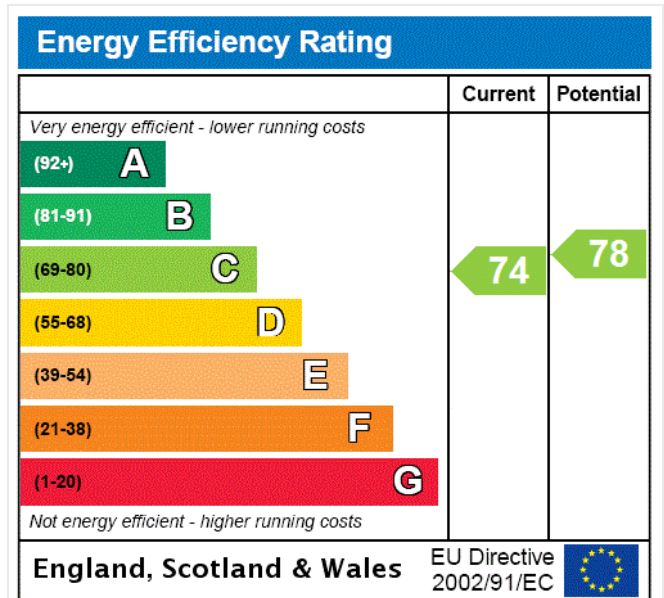


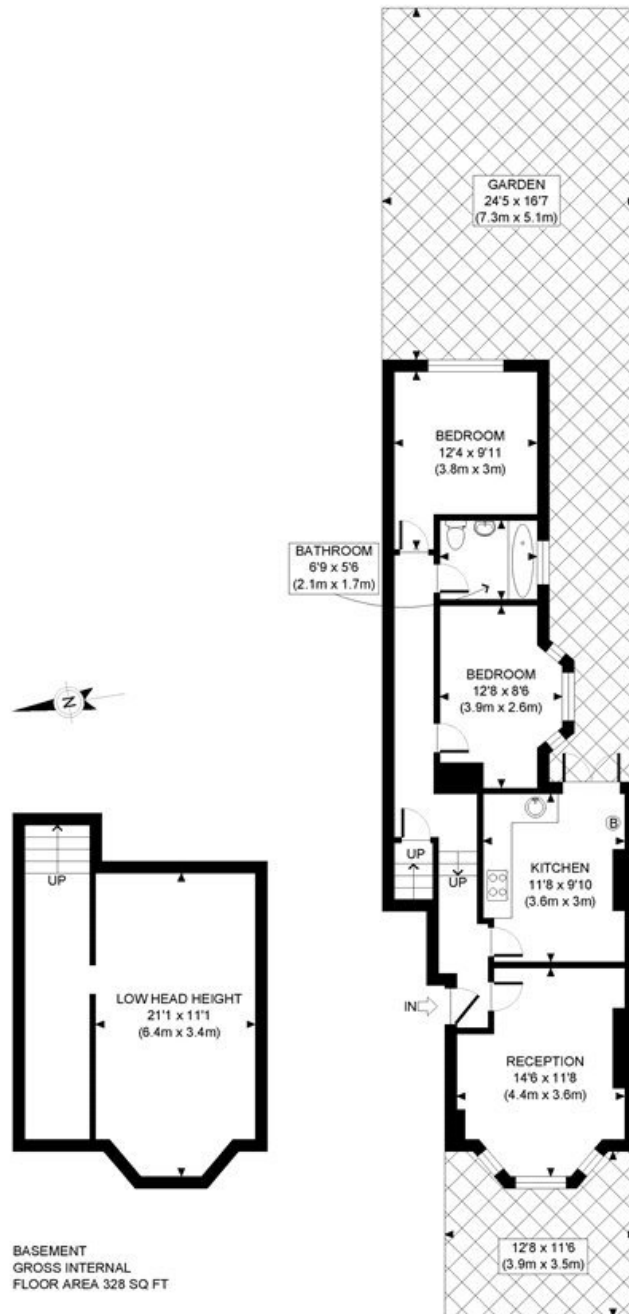


LOCAL AUTHORITY
Hammersmith & Fulham

TENURE
Leasehold.

PRICE: £600,000 Leasehold





BASEMENT
GROSS INTERNAL
FLOOR AREA 328 SQ FT

GROUND FLOOR
GROSS INTERNAL
FLOOR AREA 636 SQ FT

APPROX. GROSS INTERNAL FLOOR AREA: 964 SQ FT/ 90 SQM

PROPERTY PHOTO PLANS.CO.UK
ONE STOP SHOP FOR PROPERTY MARKETING

This plan is for illustrative purposes only and should be used as such by any prospective client. Whilst every attempt has been made to ensure the accuracy of the Floor Plan contained here, measurements of the doors, windows, rooms and any other items are approximate and no responsibility is taken for any errors, omissions, or misstatement. The services, systems and appliances shown have not been tested and no guarantee as to the operability or efficiency can be given.

The displayed square footage is taken from the floor plans with measurements created using the Royal Institute of Chartered Surveyors' Code of Practice for Measuring. These measurements are approximate and included for illustrative purposes only. Winkworth does not make any representation as to the accuracy of these measurements and you should seek to verify them for yourself. Winkworth accept no liability for any loss you may suffer if you rely on these measurements.

Shepherds Bush | 020 8735 3266 | shepherdsbush@winkworth.co.uk

Winkworth

for every step...

Under the Property Misdescriptions Act 1991, these Particulars are a guide and act as information only. All details are given in good faith and are believed to be correct at time of printing. Winkworth give no representation as to their accuracy and potential purchasers or tenants must satisfy themselves by inspection or otherwise as to their correctness. No employee of Winkworth has authority to make or give any representation or warranty in relation to this property.